

VAIA Single-lever mixer for rinsing/Profi spray - Champagne (22kt Gold)

VAIA

33 826 809 Product version from 7/1/2023



- 241mm projection
- pivotable spout 360°
- air-enriched flow
- max. flow 5.7 l/min at 3 bar flow pressure
- lead-free
- This product can help a building meet the requirements of Green Building Rating Systems, e.g. LEED®, BREEAM®, DGNB

Single-lever mixer for combining with rinsing/Profi spray only

| | | |
|--|-------------------------------|--------------------|
| | Champagne (22kt Gold) | 33 826 809-47 0010 |
| | Chrome | 33 826 809-00 0010 |
| | Brushed Platinum | 33 826 809-06 0010 |
| | Platinum | 33 826 809-08 0010 |
| | Durabrass (23kt Gold) | 33 826 809-09 0010 |
| | Dark Chrome | 33 826 809-19 0010 |
| | Brushed Durabrass (23kt Gold) | 33 826 809-28 0010 |
| | Matte Black | 33 826 809-33 0010 |
| | Brushed Bronze | 33 826 809-42 0010 |
| | Brushed Champagne (22kt Gold) | 33 826 809-46 0010 |
| | Brushed Chrome | 33 826 809-93 0010 |
| | Brushed Dark Platinum | 33 826 809-99 0010 |

Recommended miscellaneous

VAIA Dispenser with rosette - Champagne (22kt Gold) 82 434 809-47



Recommended miscellaneous

VAIA AIR SWITCH Control button - Champagne (22kt Gold) 10 713 809-47

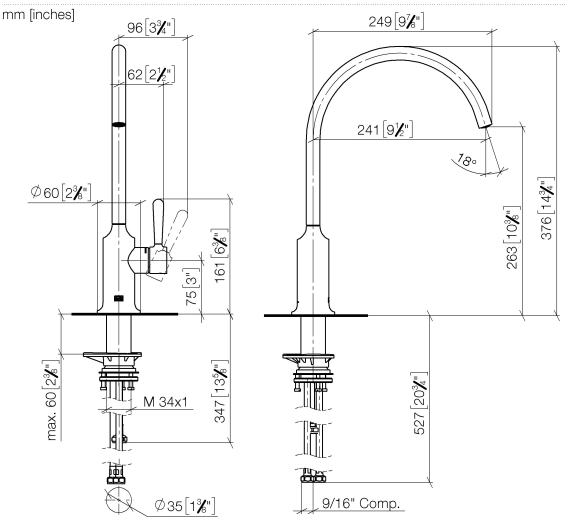


Recommended miscellaneous

VAIA Rinsing spray set - Champagne (22kt Gold) 27 718 809-47



33 826 809 Product version from 7/1/2023



Codes & Standards

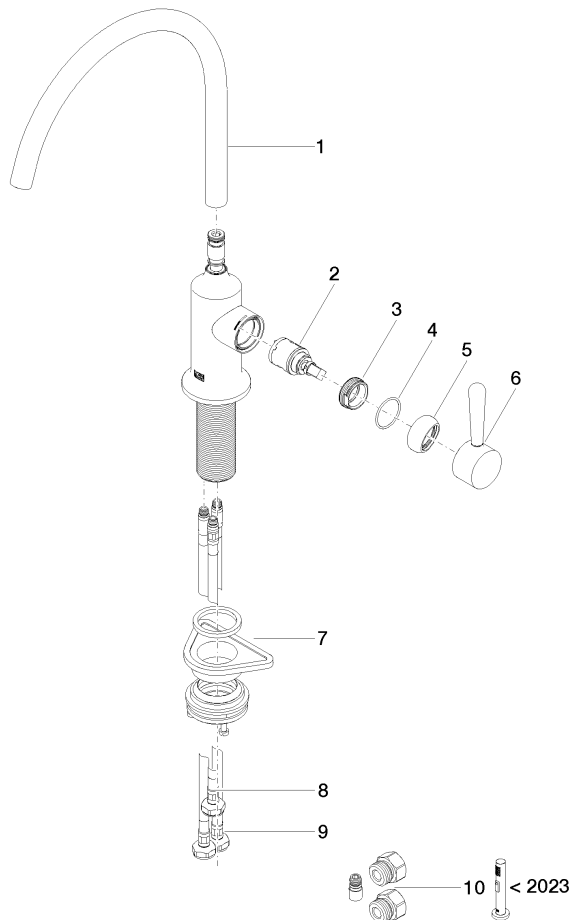
| | | | |
|--------|----------------|------------------------------------|------|
| ADA | ASME A112.18.1 | California Energy Commission (CEC) | cUPC |
| NSF372 | NSF61 | | |

Certificates and sustainability

| | | |
|--------------|------------|--------------|
| IAPMO_N-4976 | IAPMO_6397 | IAPMO_4976 (|
|--------------|------------|--------------|

33 826 809 Product version from 7/1/2023

Parts for other
finishes can be found
here: [Chrome](#)



Spare parts list

| No. | Item Number | Name | Quantity used | Delivery time |
|-----|--------------------|----------------|---------------|---------------|
| 4 | 09 14 10 091 90 | seal | 1.00 | 2 |
| 6 | 90 20 80 050 00-47 | handle | 1.00 | 30 |
| 2 | 90 15 05 042 00 90 | cartridge | 1.00 | 2 |
| 8 | 04 30 04 100 00 90 | hose | 1.00 | 2 |
| 7 | 04 23 10 044 08 90 | fixing set | 1.00 | 2 |
| 1 | 90 28 22 396 01-47 | spout | 1.00 | 30 |
| 5 | 90 28 30 052 00-47 | cover | 1.00 | 30 |
| 9 | 04 30 04 103 00 90 | hose | 2.00 | 2 |
| 3 | 09 24 04 266 90 | nut | 1.00 | 2 |
| 10 | 90 17 09 046 14 90 | conversion kit | 1.00 | 2 |