

VAIA Single-lever mixer for rinsing/Profi spray - Brushed Chrome

VAIA

33 826 809 Product version from 7/1/2023



- 241mm projection
- pivotable spout 360°
- air-enriched flow
- max. flow 5.7 l/min at 3 bar flow pressure
- lead-free
- This product can help a building meet the requirements of Green Building Rating Systems, e.g. LEED®, BREEAM®, DGNB

Single-lever mixer for combining with rinsing/Profi spray only

	Brushed Chrome	33 826 809-93 0010
	Chrome	33 826 809-00 0010
	Brushed Platinum	33 826 809-06 0010
	Platinum	33 826 809-08 0010
	Durabrass (23kt Gold)	33 826 809-09 0010
	Dark Chrome	33 826 809-19 0010
	Brushed Durabrass (23kt Gold)	33 826 809-28 0010
	Matte Black	33 826 809-33 0010
	Brushed Bronze	33 826 809-42 0010
	Brushed Champagne (22kt Gold)	33 826 809-46 0010
	Champagne (22kt Gold)	33 826 809-47 0010
	Brushed Dark Platinum	33 826 809-99 0010

Recommended miscellaneous

VAIA Dispenser with rosette - Brushed Chrome 82 434 809-93



Recommended miscellaneous

VAIA AIR SWITCH Control button - Brushed Chrome 10 713 809-93



Recommended miscellaneous

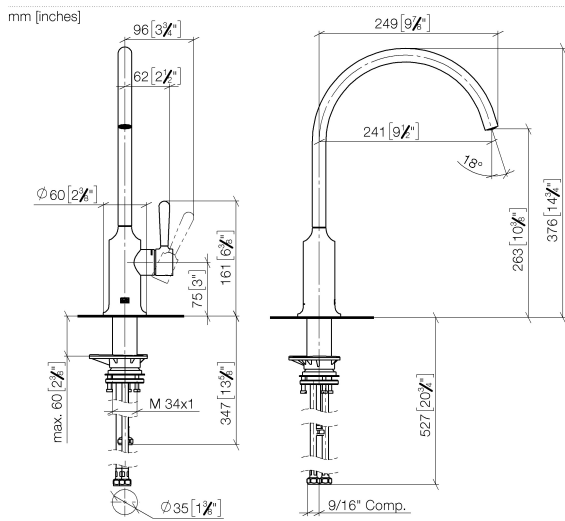
VAIA Rinsing spray set - Brushed Chrome 27 718 809-93



VAIA Single-lever mixer for rinsing/Profi spray - Brushed Chrome

VAIA

33 826 809 Product version from 7/1/2023



Codes & Standards

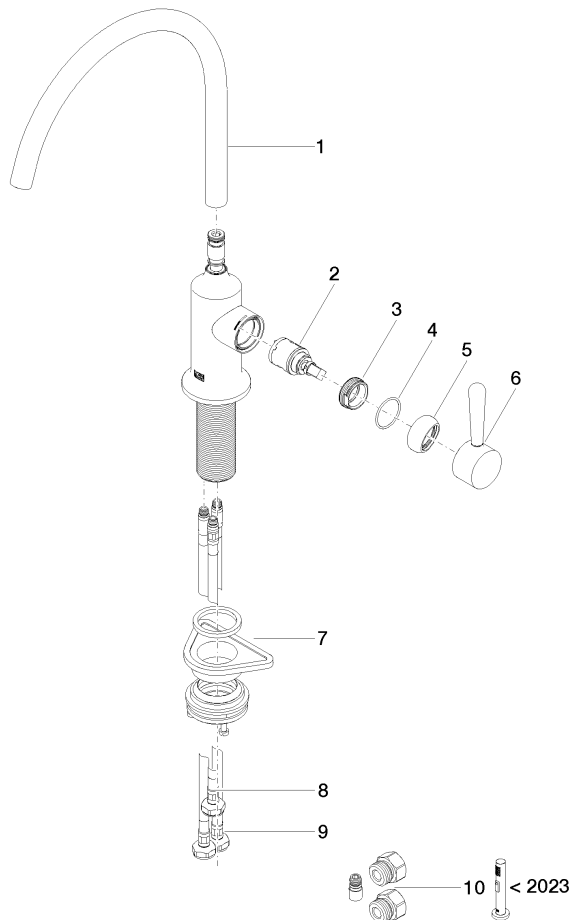
ADA	ASME A112.18.1	California Energy Commission (CEC)	cUPC
NSF372	NSF61		

Certificates and sustainability

IAPMO_N-4976 IAPMO_6397 IAPMO_4976 (

33 826 809 Product version from 7/1/2023

Parts for other
finishes can be found
here: [Chrome](#)



Spare parts list

No.	Item Number	Name	Quantity used	Delivery time
9	04 30 04 103 00 90	hose	2.00	2
8	04 30 04 100 00 90	hose	1.00	2
2	90 15 05 042 00 90	cartridge	1.00	2
6	90 20 80 050 00-93	handle	1.00	20
3	09 24 04 266 90	nut	1.00	2
4	09 14 10 091 90	seal	1.00	2
7	04 23 10 044 08 90	fixing set	1.00	2
5	90 28 30 052 00-93	cover	1.00	20
1	90 28 22 396 01-93	spout	1.00	20
10	90 17 09 046 14 90	conversion kit	1.00	2