

## TARA Single-lever mixer for rinsing/Profi spray - Champagne (22kt Gold)

33 826 888



- 235mm projection
- pivotable spout 360°
- air-enriched flow
- height of mixer 400 mm
- height up to aerator 230 mm
- single-lever mixer hole diameter 35mm
- 2x US pressure hose, 3/8"
- max. flow 5.7 l/min at 3 bar flow pressure
- lead-free
- This product can help a building meet the requirements of Green Building Rating Systems, e.g. LEED®, BREEAM®, DGNB

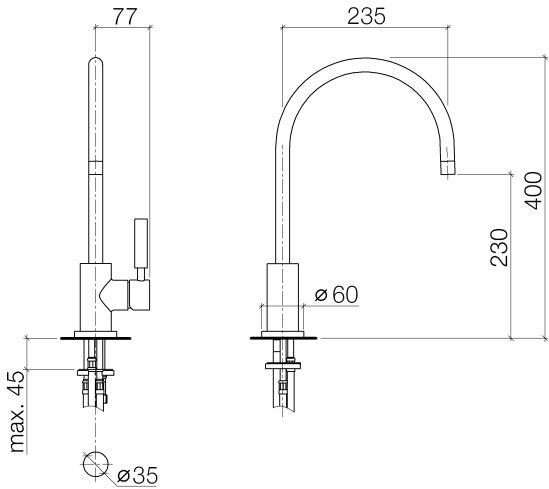
Single-lever mixer for combining with rinsing/Profi spray only

	Champagne (22kt Gold)	33 826 888-47 0010
	Chrome	33 826 888-00 0010
	Brushed Platinum	33 826 888-06 0010
	Platinum	33 826 888-08 0010
	Durabrand (23kt Gold)	33 826 888-09 0010
	Dark Chrome	33 826 888-19 0010
	Brushed Durabrand (23kt Gold)	33 826 888-28 0010
	Matte Black	33 826 888-33 0010
	Brushed Champagne (22kt Gold)	33 826 888-46 0010
	Brushed Chrome	33 826 888-93 0010
	Brushed Dark Platinum	33 826 888-99 0010

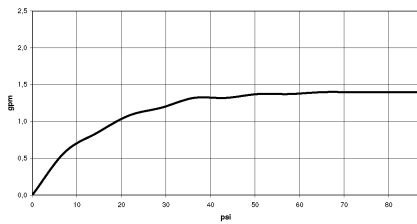


TARA Single-lever mixer for rinsing/Profi spray - Champagne (22kt Gold)

33 826 888



Flow rate chart



Codes & Standards

ADA	ASME A112.18.1/CSA B125.1	California Energy Commission (CEC)	NSF/ANSI 372
NSF/ANSI/CAN 61	NSF372	NSF61	



## TARA Single-lever mixer for rinsing/Profi spray - Champagne (22kt Gold)

---

33 826 888

### Certificates

---

IAPMO\_6397

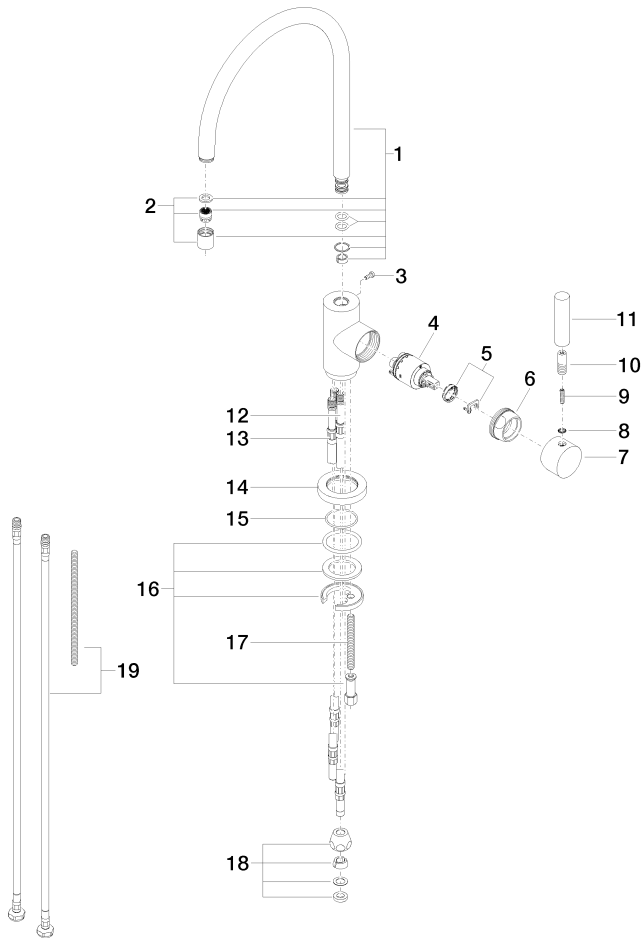
IAPMO\_N-4976

## TARA Single-lever mixer for rinsing/Profi spray - Champagne (22kt Gold)

33 826 888

### Product version from 9/1/2021

Parts for other  
finishes can be found  
here: [Chrome](#)





## TARA Single-lever mixer for rinsing/Profi spray - Champagne (22kt Gold)

---

33 826 888

### **Spare parts list**

**Product version from 9/1/2021**