

TARA ULTRA PIVOT Single-lever mixer - Durabronz (23kt Gold)

TARA ULTRA

33 845 875 Product version from 10/27/2020



- 552mm projection
- pivotable spout 360°
- air-enriched flow
- height of mixer 372 mm
- height up to aerator 290 mm
- rosette 55 mm
- hole diameter 30 mm
- 2 x pressure hose with 3/8" cap nut
- max. flow 5.7 l/min at 3 bar flow pressure
- lead-free
- This product can help a building meet the requirements of Green Building Rating Systems, e.g. LEED®, BREEAM®, DGNB

Not possible in combination with rinsing spray.

	Durabronz (23kt Gold)	33 845 875-09 0010
	Chrome	33 845 875-00 0010
	Brushed Platinum	33 845 875-06 0010
	Platinum	33 845 875-08 0010
	Dark Chrome	33 845 875-19 0010
	Brushed Durabronz (23kt Gold)	33 845 875-28 0010
	Brushed Bronze	33 845 875-42 0010
	Brushed Champagne (22kt Gold)	33 845 875-46 0010
	Champagne (22kt Gold)	33 845 875-47 0010
	Brushed Chrome	33 845 875-93 0010
	Brushed Dark Platinum	33 845 875-99 0010

Recommended miscellaneous

Dispenser with rosette - Durabronz (23kt Gold)

82 444 970-09



Recommended miscellaneous

AIR SWITCH Control button - Durabronz (23kt Gold)

10 713 970-09

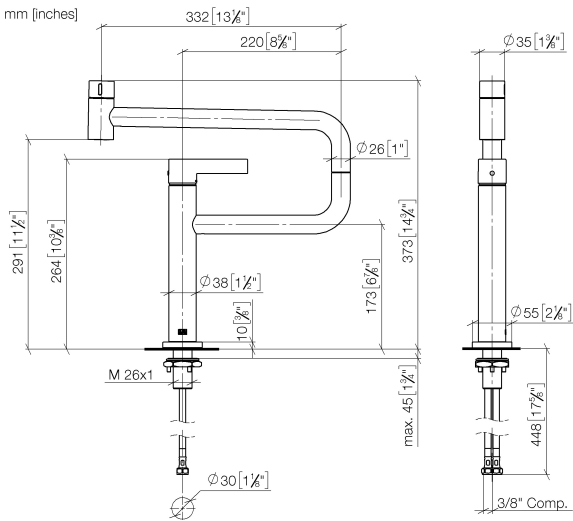




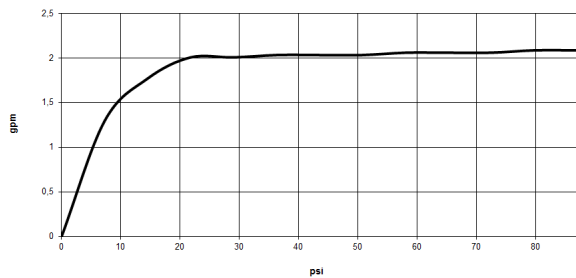
TARA ULTRA PIVOT Single-lever mixer - Durabross (23kt Gold)

TARA ULTRA

33 845 875 Product version from 10/27/2020



Flow rate chart



Codes & Standards

ADA

California Energy
Commission
(CEC)

NSF372

NSF61



TARA ULTRA PIVOT Single-lever mixer - Durabross (23kt Gold)

TARA ULTRA

33 845 875 Product version from 10/27/2020

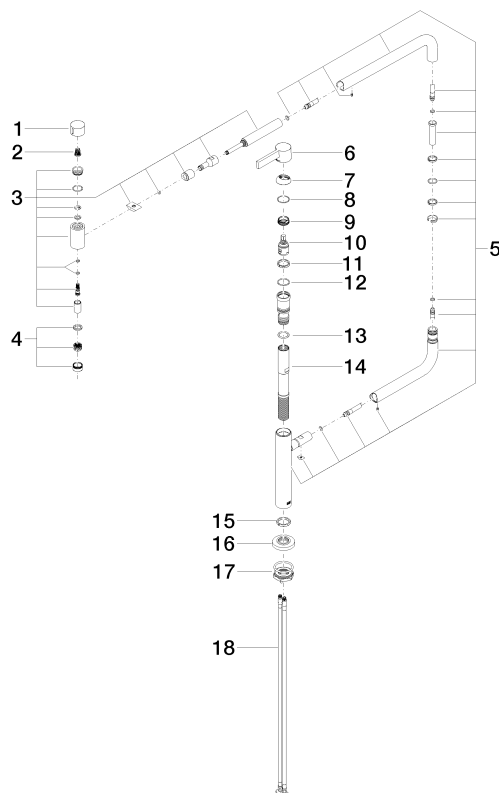
Certificates and sustainability

IAPMO_N-4976

IAPMO_6397

33 845 875 Product version from 10/27/2020

Parts for other
finishes can be found
here: Chrome



Spare parts list

No.	Item Number	Name	Quantity used	Delivery time
10	90 15 05 042 00 90	cartridge	1.00	2
2	90 12 12 002 00 90	fixing cap	1.00	2
7	09 28 30 013-09	cover	1.00	40
13	09 14 10 081 90	seal	1.00	2
11	09 28 10 156 90	ring	1.00	2
4	90 23 01 026 08-09	aerator	1.00	-
Spare part can no longer be ordered, please order the replacement item				
5	90 28 22 257 00-09	joint	1.00	40
6	90 20 87 004 00-09	handle	1.00	40
8	09 14 10 091 90	seal	1.00	2
15	09 28 10 159 90	ring	1.00	2
16	09 27 87 033-09	rosette	1.00	40
3	90 19 87 001 00-09	spout	1.00	40
14	09 30 01 126 90	connection	1.00	2
18	04 30 04 103 00 90	hose	2.00	2
9	09 24 04 266 90	nut	1.00	2
1	09 20 62 025-09	handle	1.00	40
17	04 30 11 085 87 90	fixing set	1.00	2
12	90 14 10 063 00 90	seal	1.00	2