

TARA ULTRA PIVOT Single-lever mixer - Brushed Bronze

TARA ULTRA

33 845 875 Product version from 10/27/2020



- 552mm projection
- pivotable spout 360°
- air-enriched flow
- height of mixer 372 mm
- height up to aerator 290 mm
- rosette 55 mm
- hole diameter 30 mm
- 2 x pressure hose with 3/8" cap nut
- max. flow 5.7 l/min at 3 bar flow pressure
- lead-free
- This product can help a building meet the requirements of Green Building Rating Systems, e.g. LEED®, BREEAM®, DGNB

Not possible in combination with rinsing spray.

	Brushed Bronze	33 845 875-42 0010
	Chrome	33 845 875-00 0010
	Brushed Platinum	33 845 875-06 0010
	Platinum	33 845 875-08 0010
	Durabrass (23kt Gold)	33 845 875-09 0010
	Dark Chrome	33 845 875-19 0010
	Brushed Durabrass (23kt Gold)	33 845 875-28 0010
	Brushed Champagne (22kt Gold)	33 845 875-46 0010
	Champagne (22kt Gold)	33 845 875-47 0010
	Brushed Chrome	33 845 875-93 0010
	Brushed Dark Platinum	33 845 875-99 0010

Recommended miscellaneous

**AIR SWITCH Control button -
Brushed Bronze**

10 713 970-42



Recommended miscellaneous

**Dispenser with rosette - Brushed
Bronze**

82 444 970-42

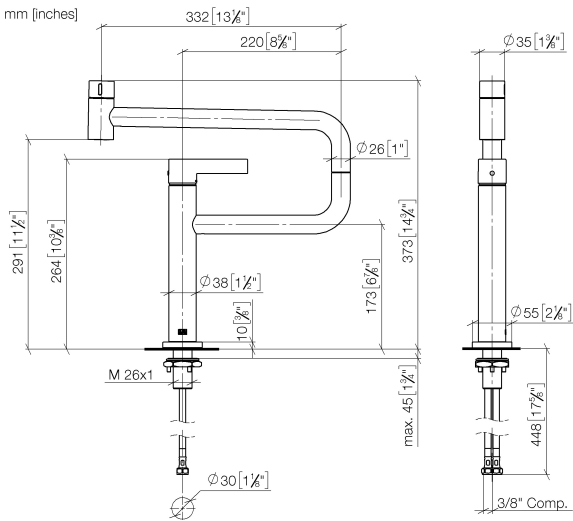




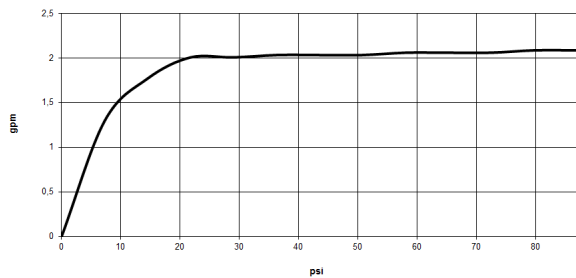
TARA ULTRA PIVOT Single-lever mixer - Brushed Bronze

TARA ULTRA

33 845 875 Product version from 10/27/2020



Flow rate chart



Codes & Standards

ADA	California Energy Commission (CEC)	NSF372	NSF61
-----	------------------------------------	--------	-------



TARA ULTRA PIVOT Single-lever mixer - Brushed Bronze

TARA ULTRA

33 845 875 Product version from 10/27/2020

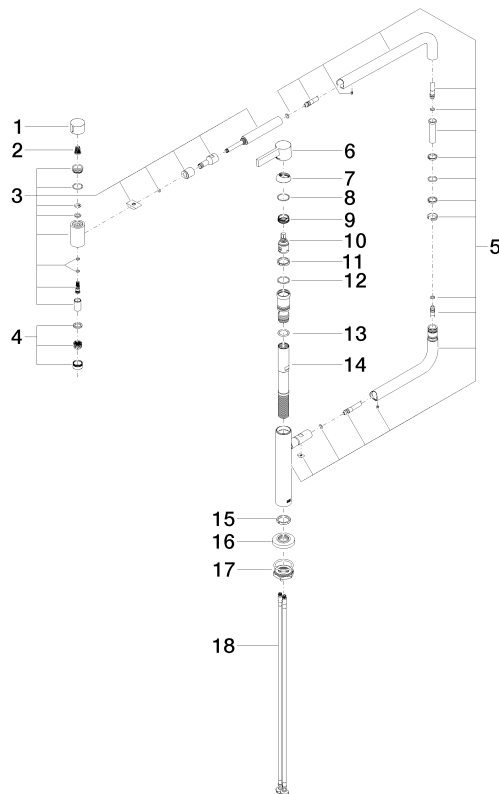
Certificates and sustainability

IAPMO_N-4976

IAPMO_6397

33 845 875 Product version from 10/27/2020

Parts for other
finishes can be found
here: [Chrome](#)



Spare parts list

No.	Item Number	Name	Quantity used	Delivery time
1	09 20 62 025-42	handle	1.00	60
7	09 28 30 013-42	cover	1.00	60
17	04 30 11 085 87 90	fixing set	1.00	2
16	09 27 87 033-42	rosette	1.00	60
2	90 12 12 002 00 90	fixing cap	1.00	2
13	09 14 10 081 90	seal	1.00	2
6	90 20 87 004 00-42	handle	1.00	30
11	09 28 10 156 90	ring	1.00	2
14	09 30 01 126 90	connection	1.00	2
4	90 23 01 026 08-42	aerator	1.00	30
5	90 28 22 257 00-42	joint	1.00	30
10	90 15 05 042 00 90	cartridge	1.00	2
3	90 19 87 001 00-42	spout	1.00	30
8	09 14 10 091 90	seal	1.00	2
12	90 14 10 063 00 90	seal	1.00	2
15	09 28 10 159 90	ring	1.00	2
9	09 24 04 266 90	nut	1.00	2
18	04 30 04 103 00 90	hose	2.00	2