

TARA ULTRA Profi single-lever mixer - Platinum

TARA ULTRA





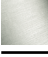

33 860 875



- 240mm projection
- pivotable 360°
- air-enriched flow and spray flow
- height of mixer 685 mm
- height up to aerator 129 mm
- hole diameter 35 mm
- 2 x pressure hose with 3/8" cap nut
- sprayface with anti-scaling system
- max. flow 5.7 l/min at 3 bar flow pressure
- lead-free
- This product can help a building meet the requirements of Green Building Rating Systems, e.g. LEED®, BREEAM®, DGNB

Intrinsic protection against back flow.

Switch back and forth between aerator and spray mode while water is running.

	Platinum	33 860 875-08 0010
	Chrome	33 860 875-00 0010
	Brushed Platinum	33 860 875-06 0010
	Dark Chrome	33 860 875-19 0010
	Brushed Chrome	33 860 875-93 0010
	Brushed Dark Platinum	33 860 875-99 0010

Recommended miscellaneous

AIR SWITCH Control button - Platinum

10 713 970-08



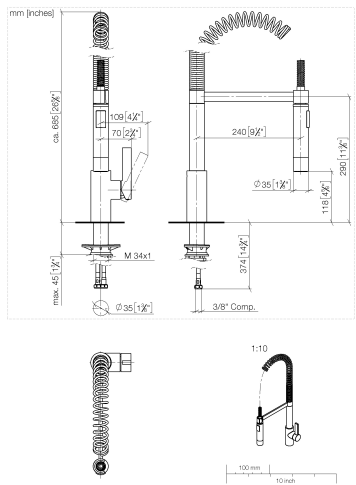
Recommended miscellaneous

Dispenser without rosette - Platinum

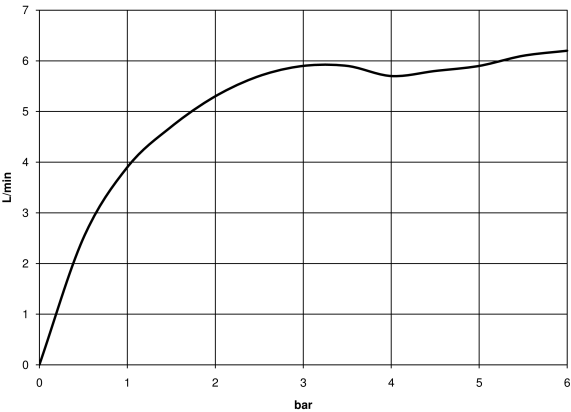
82 424 970-08



33 860 875



Flow rate chart



Codes & Standards

ADA	ASME A112.18.1	ASME A112.18.1/CSA B125.1	California Energy Commission (CEC)
cUPC	NSF/ANSI 372	NSF/ANSI/CAN 61	NSF372
NSF61			



TARA ULTRA Profi single-lever mixer - Platinum

TARA ULTRA

33 860 875

Certificates

IAPMO_4976

IAPMO_6397

IAPMO_N-4976

33 860 875

Product version up to 7/24/2018

Product version from 7/24/2018 to 5/15/2020

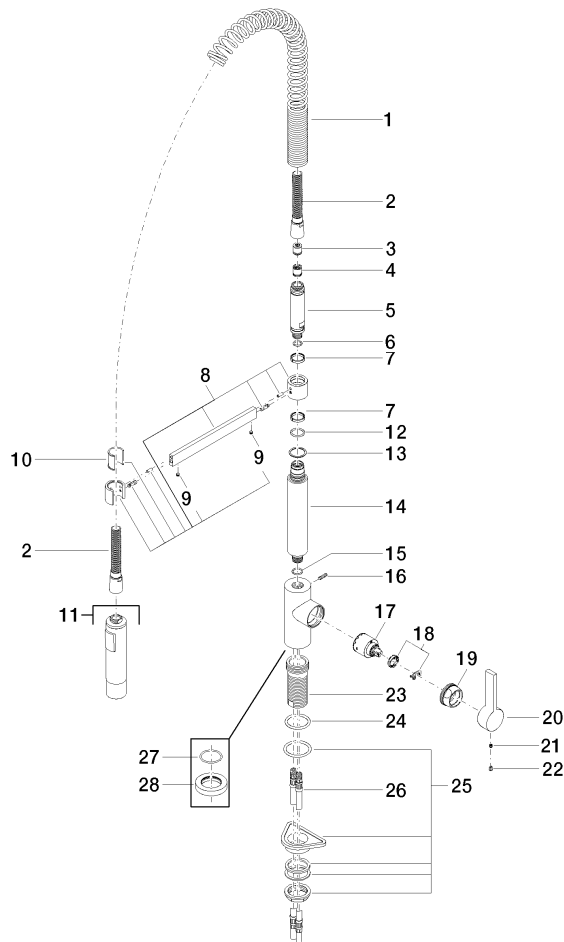
Product version from 5/15/2020 to 5/16/2020

Product version from 5/15/2020 to 5/3/2021

Product version from 5/3/2021

Product version from 6/1/2022

Parts for other
finishes can be found
here: [Chrome](#)





TARA ULTRA Profi single-lever mixer - Platinum

TARA ULTRA

33 860 875

Spare parts list

Product version up to 7/24/2018

Product version from 7/24/2018 to 5/15/2020

Product version from 5/15/2020 to 5/16/2020

Product version from 5/15/2020 to 5/3/2021

Product version from 5/3/2021

Product version from 6/1/2022

No.	Item Number	Name	Quantity used	Delivery time
	09 16 02 035 90	spring	31	2