

## TARA ULTRA Profi single-lever mixer - Dark Chrome

TARA ULTRA







33 860 875



- 240mm projection
- pivotable 360°
- air-enriched flow and spray flow
- height of mixer 685 mm
- height up to aerator 129 mm
- hole diameter 35 mm
- 2 x pressure hose with 3/8" cap nut
- sprayface with anti-scaling system
- max. flow 5.7 l/min at 3 bar flow pressure
- lead-free
- This product can help a building meet the requirements of Green Building Rating Systems, e.g. LEED®, BREEAM®, DGNB

Intrinsic protection against back flow.

Switch back and forth between aerator and spray mode while water is running.

	Dark Chrome	33 860 875-19 0010
	Chrome	33 860 875-00 0010
	Brushed Platinum	33 860 875-06 0010
	Platinum	33 860 875-08 0010
	Brushed Chrome	33 860 875-93 0010
	Brushed Dark Platinum	33 860 875-99 0010

### Recommended miscellaneous



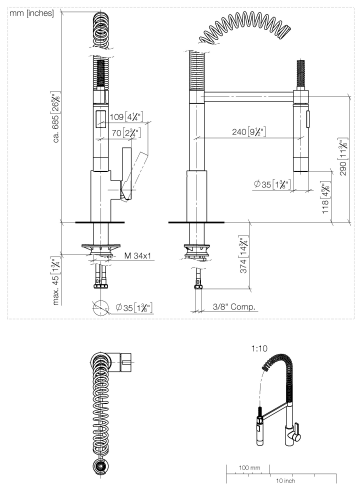
**Dispenser without rosette - Dark Chrome** 82 424 970-19

### Recommended miscellaneous

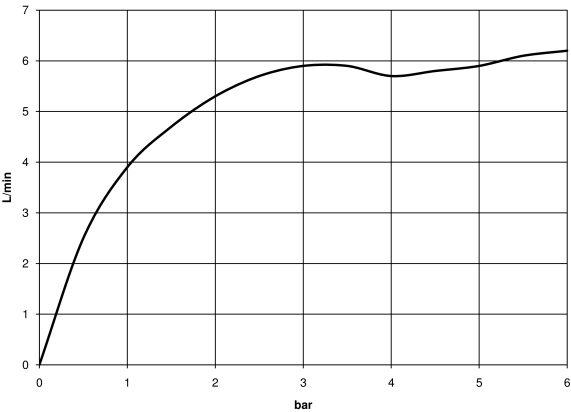


**AIR SWITCH Control button - Dark Chrome** 10 713 970-19

33 860 875



Flow rate chart



Codes & Standards

ADA	ASME A112.18.1/CSA B125.1	California Energy Commission (CEC)	NSF/ANSI 372
NSF/ANSI/CAN 61	NSF372	NSF61	



## TARA ULTRA Profi single-lever mixer - Dark Chrome

TARA ULTRA

33 860 875

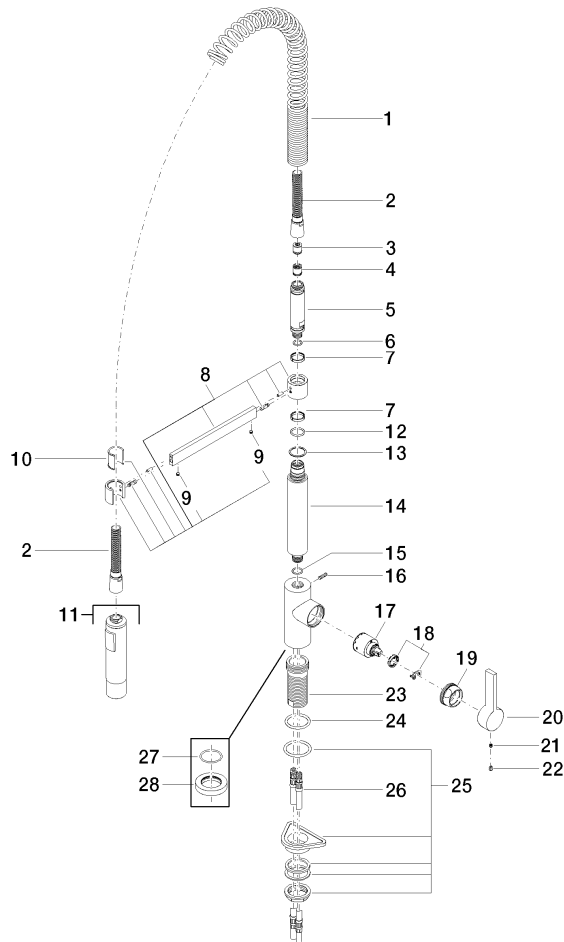
### Certificates

IAPMO\_6397

IAPMO\_N-4976

33 860 875

Parts for other  
finishes can be found  
here: [Chrome](#)





## Spare parts list