

# TARA ULTRA Profi single-lever mixer - Brushed Chrome

TARA ULTRA







33 860 875



- 240mm projection
- pivotable 360°
- air-enriched flow and spray flow
- height of mixer 685 mm
- height up to aerator 129 mm
- hole diameter 35 mm
- 2 x pressure hose with 3/8" cap nut
- sprayface with anti-scaling system
- max. flow 5.7 l/min at 3 bar flow pressure
- lead-free
- This product can help a building meet the requirements of Green Building Rating Systems, e.g. LEED®, BREEAM®, DGNB

Intrinsic protection against back flow.

Switch back and forth between aerator and spray mode while water is running.

|  |                       |                    |
|--|-----------------------|--------------------|
|  | Brushed Chrome        | 33 860 875-93 0010 |
|  | Chrome                | 33 860 875-00 0010 |
|  | Brushed Platinum      | 33 860 875-06 0010 |
|  | Platinum              | 33 860 875-08 0010 |
|  | Dark Chrome           | 33 860 875-19 0010 |
|  | Brushed Dark Platinum | 33 860 875-99 0010 |

## Recommended miscellaneous



**Dispenser without rosette -  
Brushed Chrome**

82 424 970-93

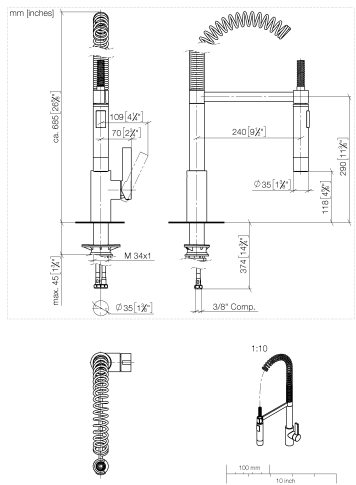
## Recommended miscellaneous



**AIR SWITCH Control button -  
Brushed Chrome**

10 713 970-93

33 860 875



Flow rate chart



Codes & Standards

|                    |                                 |  |              |
|--------------------|---------------------------------|--|--------------|
| ADA                | ASME<br>A112.18.1/CSA<br>B125.1 | California Energy<br>Commission<br>(CEC) | NSF/ANSI 372 |
| NSF/ANSI/CAN<br>61 | NSF372                          | NSF61                                    |              |



## TARA ULTRA Profi single-lever mixer - Brushed Chrome

TARA ULTRA

33 860 875

### Certificates

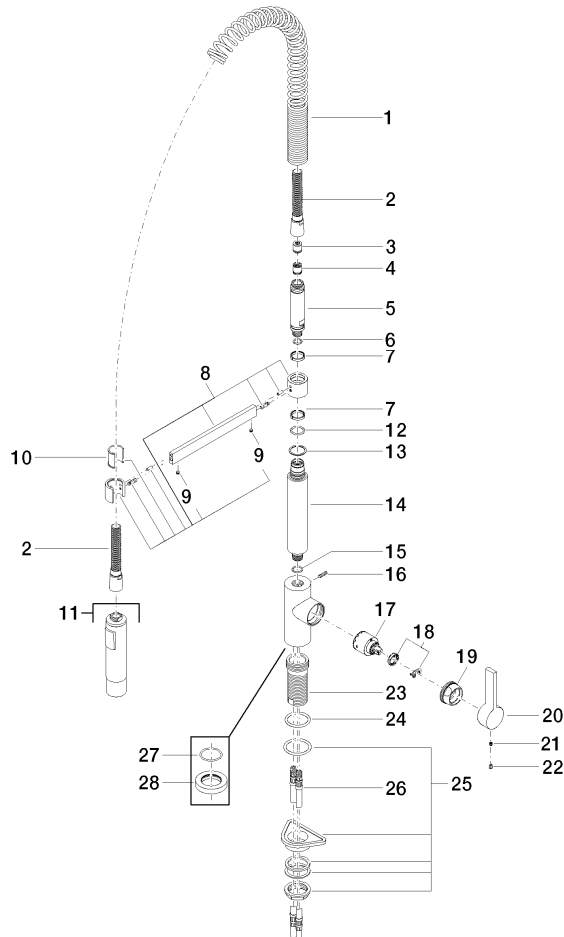
IAPMO\_6397

IAPMO\_N-4976

33 860 875

**Product version from 6/1/2022**

Parts for other  
finishes can be found  
here: [Chrome](#)





## **Spare parts list**

**Product version from 6/1/2022**