

SYNC Profi single-lever mixer - Chrome

SYNC

33 865 895



- 200mm projection
- Flexible silicone hose with large operating range of up to 350 mm
- pivotable 360°
- Optional swivel limiter available with swivel limiter set 12 821 970 90
- air-enriched flow and spray flow
- height of mixer 451 mm
- height up to aerator 119 mm
- hole diameter 35 mm
- 2 x pressure hose with 3/8" cap nut
- sprayface with anti-scaling system
- max. flow 5.7 l/min at 3 bar flow pressure
- lead-free
- This product can help a building meet the requirements of Green Building Rating Systems, e.g. LEED®, BREEAM®, DGNB

Intrinsic protection against back flow.

Switch back and forth between aerator and spray mode while water is running.

	Chrome	33 865 895-00 0010
	Brushed Platinum	33 865 895-06 0010
	Platinum	33 865 895-08 0010
	Durabrand (23kt Gold)	33 865 895-09 0010
	Dark Chrome	33 865 895-19 0010
	Brushed Durabrand (23kt Gold)	33 865 895-28 0010
	Matte Black	33 865 895-33 0010
	Brushed Champagne (22kt Gold)	33 865 895-46 0010
	Champagne (22kt Gold)	33 865 895-47 0010
	Brushed Chrome	33 865 895-93 0010
	Brushed Dark Platinum	33 865 895-99 0010

Recommended miscellaneous

Swivel limitation set - 12 821 970 90



Recommended miscellaneous

AIR SWITCH Control button - Chrome 10 713 970-00



Recommended miscellaneous

Dispenser without rosette - Chrome 82 424 970-00

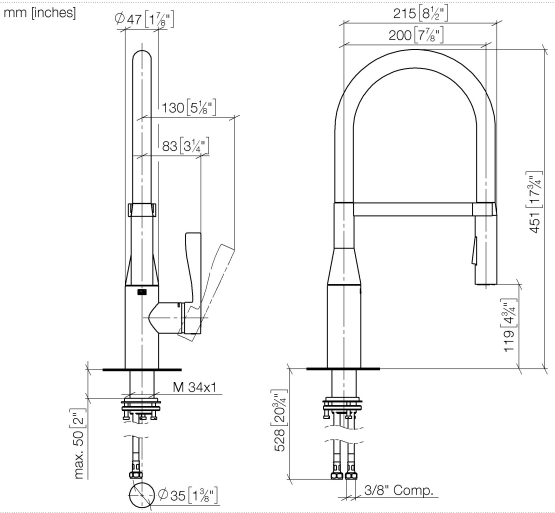




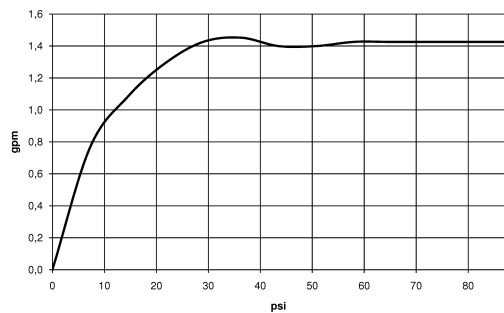
SYNC Profi single-lever mixer - Chrome

SYNC

33 865 895



Flow rate chart



Codes & Standards

ADA	ASME A112.18.1	ASME A112.18.1/CSA B125.1	California Energy Commission (CEC)
cUPC	NSF/ANSI 372	NSF/ANSI/CAN 61	NSF372
NSF61			



SYNC Profi single-lever mixer - Chrome

SYNC

33 865 895

Certificates

IAPMO_4976

IAPMO_6397

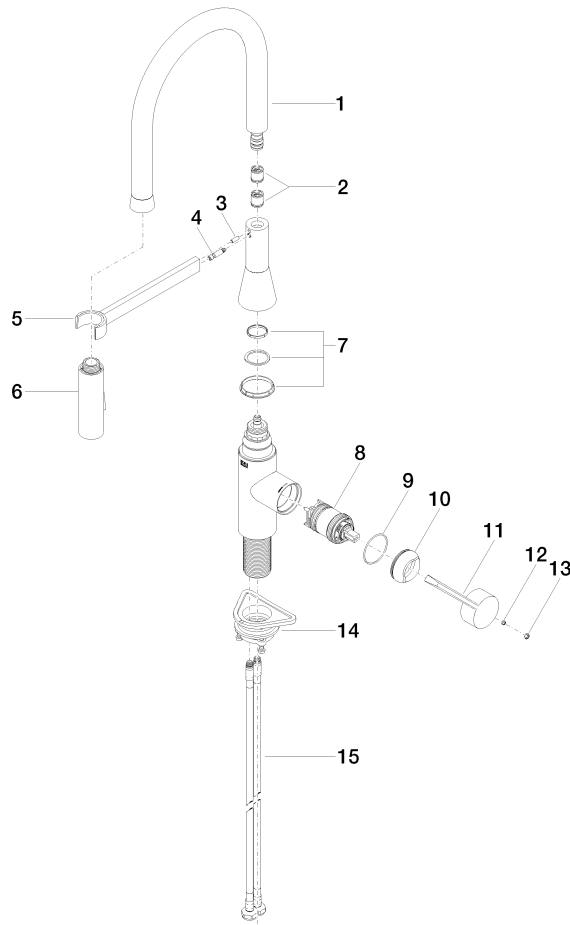
IAPMO_N-4976

33 865 895

Product version up to 5/19/2021

Product version from 5/19/2021 to 5/20/2021

Product version from 5/20/2021





SYNC Profi single-lever mixer - Chrome

SYNC

33 865 895

Spare parts list

Product version up to 5/19/2021

Product version from 5/19/2021 to 5/20/2021

Product version from 5/20/2021

No.	Item Number	Name	Quantity used	Delivery time
	90 30 02 100 00-00	hose	16	10