

## ELIO Single-lever mixer Pull-out with spray function - Dark Chrome

ELIO

33 870 790



- 235mm projection
- pivotable spout 360°
- laminar and spray flow
- height of mixer 342 mm
- height up to aerator 292 mm
- hole diameter 35 mm
- 2 x pressure hose with 3/8" cap nut
- fabric braided hose 1500 mm
- max. flow 5.7 l/min at 3 bar flow pressure
- lead-free
- This product can help a building meet the requirements of Green Building Rating Systems, e.g. LEED®, BREEAM®, DGNB

Intrinsic protection against back flow.

Push button locks into spray mode when pressed.  
To switch back to aerator mode the water must be turned off.

	Dark Chrome	33 870 790-19 0010
	Chrome	33 870 790-00 0010
	Brushed Platinum	33 870 790-06 0010
	Platinum	33 870 790-08 0010
	Brushed Durabronze (23kt Gold)	33 870 790-28 0010
	Brushed Champagne (22kt Gold)	33 870 790-46 0010
	Champagne (22kt Gold)	33 870 790-47 0010
	Brushed Chrome	33 870 790-93 0010
	Brushed Dark Platinum	33 870 790-99 0010

### Recommended miscellaneous

**AIR SWITCH Control button - Chrome** 10 713 970-00



### Recommended miscellaneous

**Dispenser without rosette - Chrome** 82 424 970-00



### Recommended miscellaneous

**Dispenser without rosette - Dark Chrome** 82 424 970-19

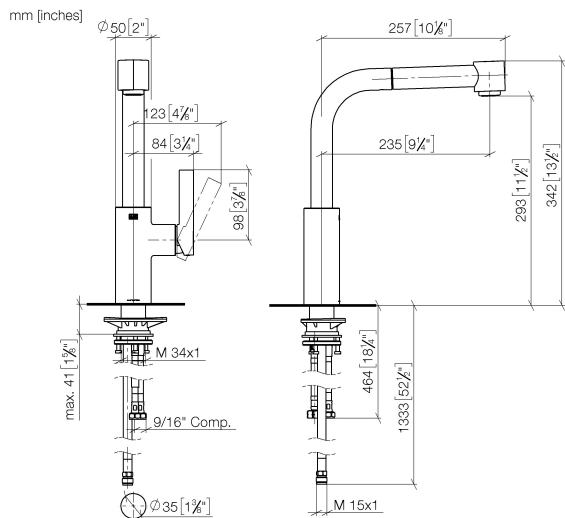


### Recommended miscellaneous

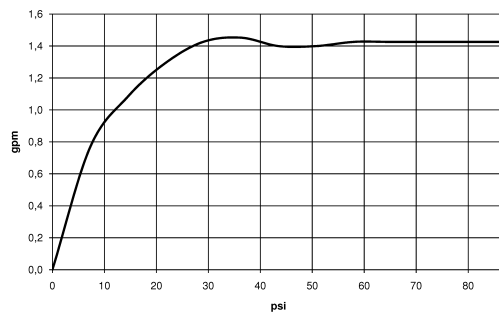
**AIR SWITCH Control button - Dark Chrome** 10 713 970-19



33 870 790



### Flow rate chart



### Codes & Standards

ADA

ASME  
A112.18.1/CSA  
B125.1

California Energy  
Commission  
(CEC)

NSF/ANSI 372

NSF/ANSI/CAN  
61

NSF372

NSF61



## ELIO Single-lever mixer Pull-out with spray function - Dark Chrome

---

ELIO

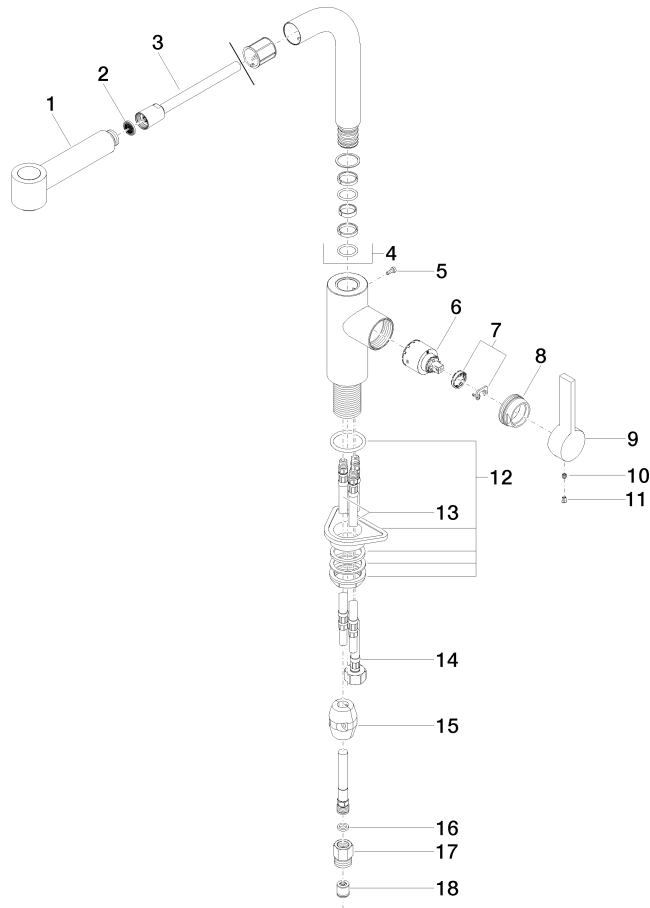
33 870 790

### Certificates

---

IAPMO\_6397

IAPMO\_N-4976





## ELIO Single-lever mixer Pull-out with spray function - Dark Chrome

ELIO

33 870 790

### Spare parts list