

ELIO Single-lever mixer Pull-out with spray function - Brushed Champagne (22kt Gold)

ELIO

33 870 790



- 235mm projection
- pivotable spout 360°
- laminar and spray flow
- height of mixer 342 mm
- height up to aerator 292 mm
- hole diameter 35 mm
- 2 x pressure hose with 3/8" cap nut
- fabric braided hose 1500 mm
- max. flow 5.7 l/min at 3 bar flow pressure
- lead-free
- This product can help a building meet the requirements of Green Building Rating Systems, e.g. LEED®, BREEAM®, DGNB

Intrinsic protection against back flow.

Push button locks into spray mode when pressed.
To switch back to aerator mode the water must be turned off.

	Brushed Champagne (22kt Gold)	33 870 790-46 0010
	Chrome	33 870 790-00 0010
	Brushed Platinum	33 870 790-06 0010
	Platinum	33 870 790-08 0010
	Dark Chrome	33 870 790-19 0010
	Brushed Durabronze (23kt Gold)	33 870 790-28 0010
	Champagne (22kt Gold)	33 870 790-47 0010
	Brushed Chrome	33 870 790-93 0010
	Brushed Dark Platinum	33 870 790-99 0010

Recommended miscellaneous



**Dispenser without rosette -
Brushed Champagne (22kt Gold)** 82 424 970-46

Recommended miscellaneous



**AIR SWITCH Control button -
Brushed Champagne (22kt Gold)** 10 713 970-46

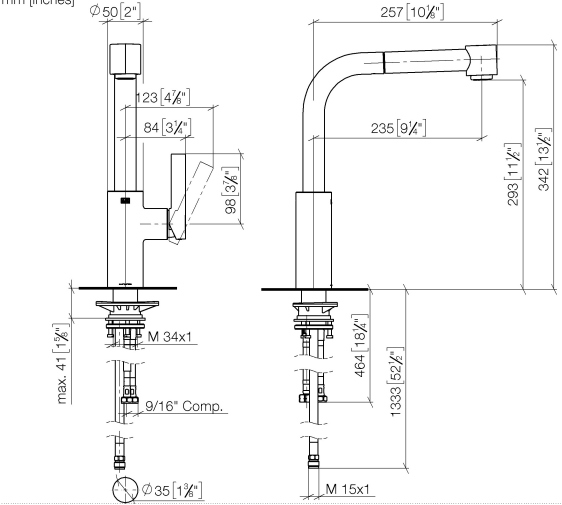


ELIO Single-lever mixer Pull-out with spray function - Brushed Champagne
(22kt Gold)

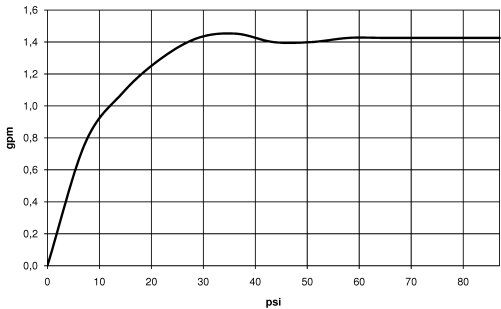
ELIO

33 870 790

mm [inches]



Flow rate chart



Codes & Standards

ADA	ASME A112.18.1/CSA B125.1	California Energy Commission (CEC)	NSF/ANSI 372
NSF/ANSI/CAN 61	NSF372	NSF61	



ELIO Single-lever mixer Pull-out with spray function - Brushed Champagne (22kt Gold)

ELIO

33 870 790

Certificates

IAPMO_6397

IAPMO_N-4976

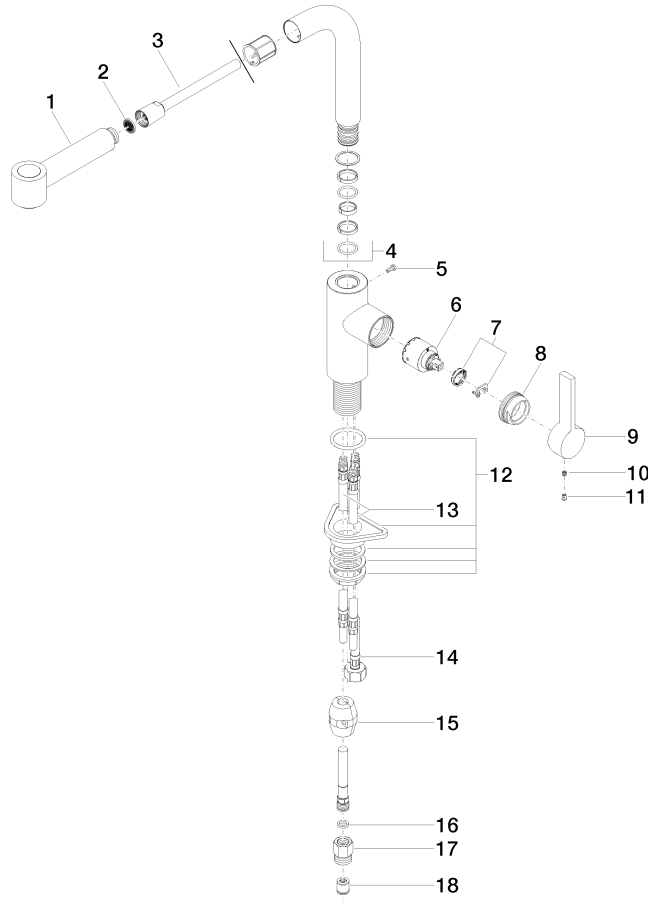
ELIO Single-lever mixer Pull-out with spray function - Brushed Champagne (22kt Gold)

ELIO

33 870 790

Product version from 6/1/2022

Parts for other
finishes can be found
here: [Chrome](#)





ELIO Single-lever mixer Pull-out with spray function - Brushed Champagne (22kt Gold)

ELIO

33 870 790

Spare parts list

Product version from 6/1/2022