

VAIA Single-lever mixer Pull-down with spray function - Brushed Champagne (22kt Gold)

VAIA

33 870 809 Product version from 7/1/2023



- 240mm projection
- pivotable spout 360°
- Optional swivel limiter available with swivel limiter set 12 823 970 90
- air-enriched flow and spray flow
- height of mixer 416 mm
- height up to laminar flow regulator 228 mm
- hole diameter 35 mm
- 2 x pressure hose with 3/8" cap nut
- 1800 mm metal shower hose
- sprayface with anti-scaling system
- max. flow 5.7 l/min at 3 bar flow pressure
- lead-free
- Flow modes can be changed while the water is running
- This product can help a building meet the requirements of Green Building Rating Systems, e.g. LEED®, BREEAM®, DGNB

Intrinsic protection against back flow.

Switch back and forth between aerator and spray mode while water is running.

	Brushed Champagne (22kt Gold)	33 870 809-46 0010
	Chrome	33 870 809-00 0010
	Brushed Platinum	33 870 809-06 0010
	Platinum	33 870 809-08 0010
	Durabrand (23kt Gold)	33 870 809-09 0010
	Dark Chrome	33 870 809-19 0010
	Brushed Durabrand (23kt Gold)	33 870 809-28 0010
	Matte Black	33 870 809-33 0010
	Brushed Bronze	33 870 809-42 0010
	Champagne (22kt Gold)	33 870 809-47 0010
	Brushed Chrome	33 870 809-93 0010
	Brushed Dark Platinum	33 870 809-99 0010

Recommended miscellaneous



Swivel limitation set - 12 823 970 90

Recommended miscellaneous



**VAIA Dispenser with rosette -
Brushed Champagne (22kt Gold)** 82 434 809-46

Recommended miscellaneous



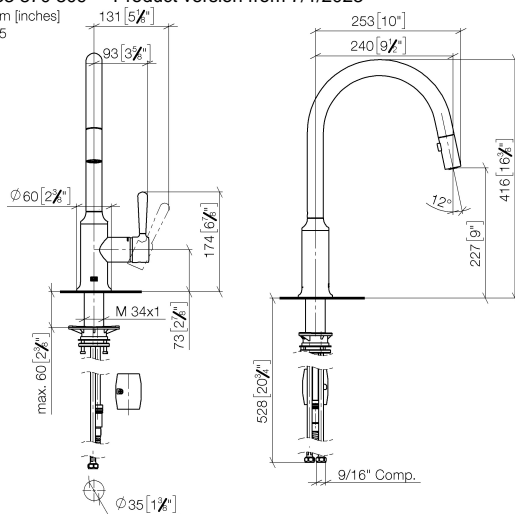
VAIA AIR SWITCH Control button - 10 713 809-46
Brushed Champagne (22kt Gold)

VAIA Single-lever mixer Pull-down with spray function - Brushed Champagne (22kt Gold)

VAIA

33 870 809 Product version from 7/1/2023

mm [inches]
1:5

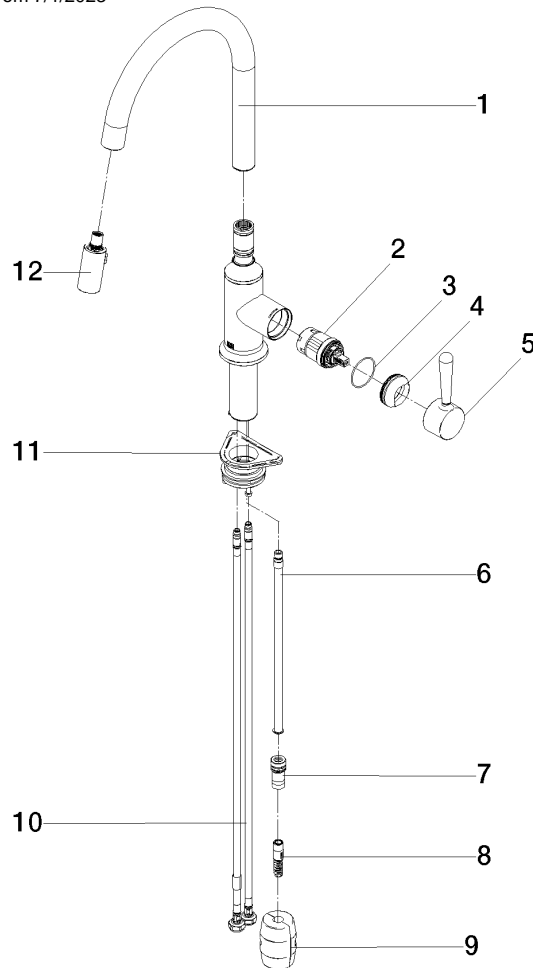


Codes & Standards

ADA	ASME A112.18.1	California Energy Commission (CEC)	cUPC
NSF372	NSF61		

Certificates and sustainability

IAPMO_N-4976 IAPMO_6397 IAPMO_4976 (



Spare parts list

No.	Item Number	Name	Quantity used	Delivery time
5	90 20 80 052 00-46	handle	1.00	30
4	09 28 30 030-46	cover	1.00	60
1	90 28 22 397 00-46	spout	1.00	30
2	90 15 05 064 05 90	cartridge	1.00	2
3	09 14 10 190 90	seal	1.00	2
6	04 28 20 067 00 90	pipe	1.00	2
7	90 24 03 253 01 90	adaptor	1.00	2
12	90 18 40 317 00-46	shower	1.00	30
8	04 30 02 120 00-85	hose	1.00	10
10	04 30 04 103 00 90	hose	2.00	2
11	04 30 11 040 00 90	fixing set	1.00	2
9	04 21 50 010 00 90	accessories	1.00	2