

## META SQUARE Single-lever mixer Pull-down with spray function - Platinum

META SQUARE

33 870 861 Product version from 2/1/2023 to 10/30/2024



- 240mm projection
- pivotable spout 360°
- Optional swivel limiter available with swivel limiter set 12 823 970 90
- laminar and spray flow
- height of mixer 386 mm
- height up to laminar flow regulator 183 mm
- hole diameter 35 mm
- 2 x pressure hose with 3/8" cap nut
- 1800 mm metal shower hose
- sprayface with anti-scaling system
- max. flow 5.7 l/min at 3 bar flow pressure
- lead-free
- Flow modes can be changed while the water is running
- This product can help a building meet the requirements of Green Building Rating Systems, e.g. LEED®, BREEAM®, DGNB

Intrinsic protection against back flow.

Push button locks into spray mode when pressed. To switch back to laminar flow the water must be turned off.

	Platinum	33 870 861-08 0010
	Chrome	33 870 861-00 0010
	Brushed Platinum	33 870 861-06 0010
	Durabronze (23kt Gold)	33 870 861-09 0010
	Dark Chrome	33 870 861-19 0010
	Brushed Durabronze (23kt Gold)	33 870 861-28 0010
	Matte Black	33 870 861-33 0010
	Brushed Bronze	33 870 861-42 0010
	Brushed Champagne (22kt Gold)	33 870 861-46 0010
	Champagne (22kt Gold)	33 870 861-47 0010
	Brushed Chrome	33 870 861-93 0010
	Brushed Dark Platinum	33 870 861-99 0010

### Recommended miscellaneous

	<b>Swivel limitation set -</b>	12 823 970 90
--	--------------------------------	---------------

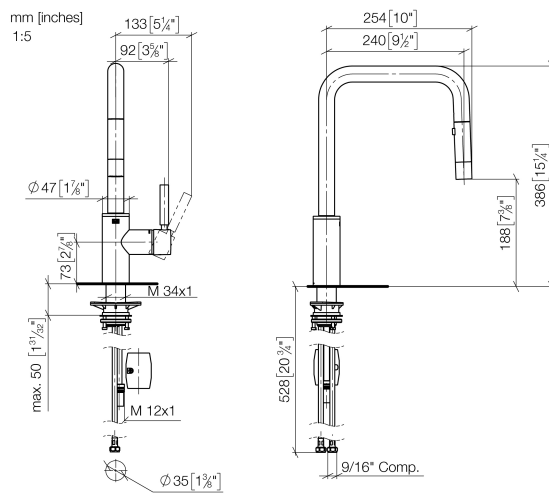
### Recommended miscellaneous

	<b>AIR SWITCH Control button - Platinum</b>	10 713 970-08
--	---	---------------

### Recommended miscellaneous

	<b>Dispenser without rosette - Platinum</b>	82 424 970-08
--	---	---------------

33 870 861 Product version from 2/1/2023 to 10/30/2024

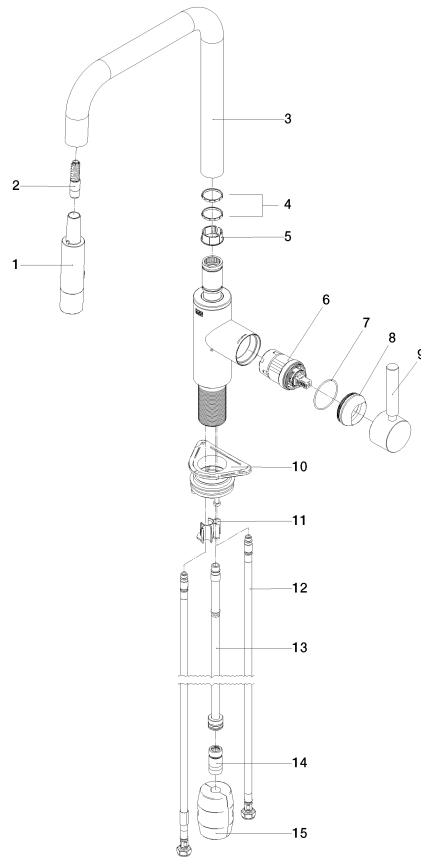


## Codes & Standards

ADA	ASME A112.18.1	California Energy Commission (CEC)	cUPC
NSF372	NSF61		

## Certificates and sustainability

IAPMO\_6397 IAPMO\_N-4976 IAPMO\_4976 (



## Spare parts list

No.	Item Number	Name	Quantity used	Delivery time
6	90 15 05 064 05 90	cartridge	1.00	2
4	09 28 10 160 90	ring	2.00	2
15	04 21 50 010 00 90	accessories	1.00	2
10	04 30 11 040 00 90	fixing set	1.00	2
12	04 30 04 103 00 90	hose	2.00	2
8	09 28 30 030-08	cover	1.00	40
7	09 14 10 190 90	seal	1.00	2
5	09 18 40 186 90	sleeve	1.00	2
13	04 28 20 067 00 90	pipe	1.00	2
11	09 20 93 056 90	insert	1.00	2
1	90 12 11 148 00-08	shower	1.00	60
9	90 20 66 027 00-08	handle	1.00	40
2	04 30 02 120 00-85	hose	1.00	10
14	90 24 03 253 01 90	adaptor	1.00	2
3	90 28 22 308 00-08	spout	1.00	40