

## TARA ULTRA Single-lever mixer Pull-down with spray function - Durabrand (23kt Gold)

TARA ULTRA

33 870 875 Product version from 2/26/2015 to 10/30/2024



- 240mm projection
- pivotable spout 360°
- Optional swivel limiter available with swivel limiter set 12 823 970 90
- laminar and spray flow
- height of mixer 500 mm
- height up to laminar flow regulator 240 mm
- hole diameter 35 mm
- 2 x pressure hose with 3/8" cap nut
- 1800 mm metal shower hose
- sprayface with anti-scaling system
- max. flow 5.7 l/min at 3 bar flow pressure
- lead-free
- Flow modes can be changed while the water is running
- This product can help a building meet the requirements of Green Building Rating Systems, e.g. LEED®, BREEAM®, DGNB

Intrinsic protection against back flow.

Push button locks into spray mode when pressed. To switch back to laminar flow the water must be turned off.

	Durabrand (23kt Gold)	33 870 875-09 0010
	Chrome	33 870 875-00 0010
	Brushed Platinum	33 870 875-06 0010
	Platinum	33 870 875-08 0010
	Dark Chrome	33 870 875-19 0010
	Brushed Durabrand (23kt Gold)	33 870 875-28 0010
	Matte Black	33 870 875-33 0010
	Brushed Bronze	33 870 875-42 0010
	Brushed Champagne (22kt Gold)	33 870 875-46 0010
	Champagne (22kt Gold)	33 870 875-47 0010
	Brushed Chrome	33 870 875-93 0010
	Brushed Dark Platinum	33 870 875-99 0010

### Recommended miscellaneous

**Swivel limitation set -**

12 823 970 90



### Recommended miscellaneous

**AIR SWITCH Control button - Durabrand (23kt Gold)**

10 713 970-09



### Recommended miscellaneous

**Dispenser without rosette - Durabrand (23kt Gold)**

82 424 970-09

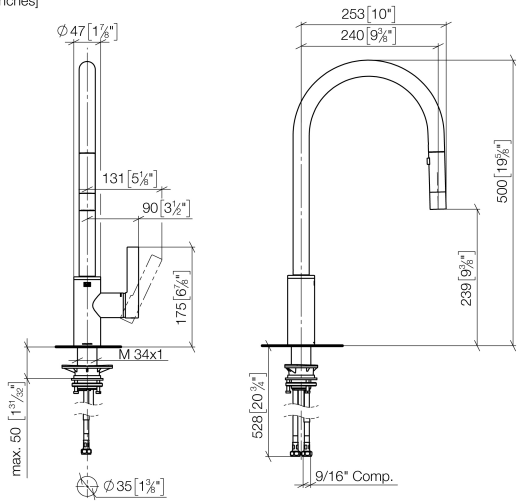




TARA ULTRA Single-lever mixer Pull-down with spray function - Durabrass (23kt Gold)

TARA ULTRA

33 870 875 Product version from 2/26/2015 to 10/30/2024  
mm [inches]



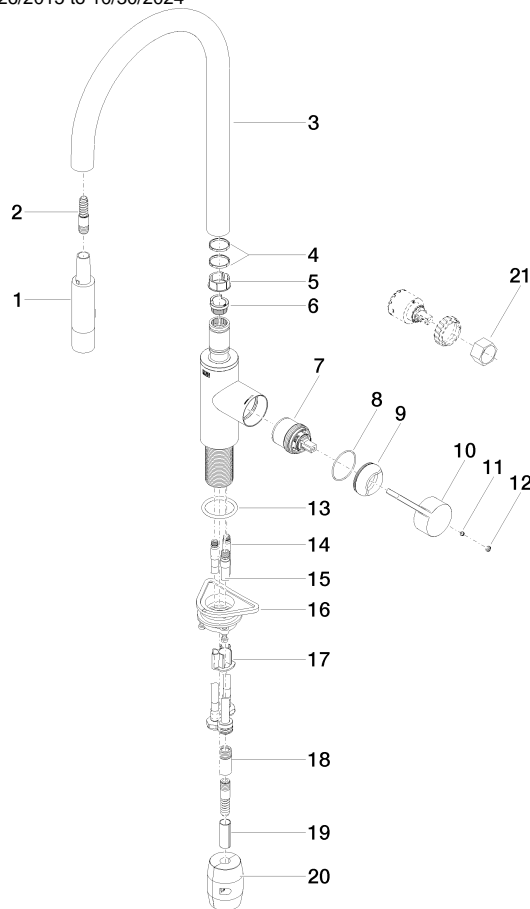
Codes & Standards

ADA	California Energy Commission (CEC)	NSF372	NSF61
-----	------------------------------------	--------	-------

Certificates and sustainability

IAPMO\_N-4976 IAPMO\_6397

33 870 875 Product version from 2/26/2015 to 10/30/2024



## Spare parts list

No.	Item Number	Name	Quantity used	Delivery time
	4 09 28 10 160 90	ring	2.00	2
	16 04 30 11 040 00 90	fixing set	1.00	2
	2 04 30 02 120 00-85	hose	1.00	10
	17 09 20 93 056 90	insert	1.00	2
	6 09 30 11 203 90	ring	1.00	2
	8 09 14 10 190 90	seal	1.00	2
	9 09 28 30 030-09	cover	1.00	40
	20 04 21 50 010 00 90	accessories	1.00	2
	5 09 18 40 186 90	sleeve	1.00	2
	19 09 30 03 038 90	hose	1.00	2
	10 09 20 87 020-09	handle	1.00	40
	15 04 28 20 067 00 90	pipe	1.00	2
	12 90 31 20 087 00-09	plug	1.00	40
	14 04 30 04 103 00 90	hose	2.00	2
	3 90 28 22 304 00-09	spout	1.00	40
	18 90 24 03 253 01 90	adaptor	1.00	2
	13 09 14 10 036 90	seal	1.00	2
	1 90 12 11 148 00-09	shower	1.00	60
	11 90 31 11 063 00 90	pin	1.00	2
	21 90 30 09 031 00 90	key	1.00	2
	7 90 15 05 064 05 90	cartridge	1.00	2