

TARA ULTRA Single-lever mixer Pull-down with spray function - Matte Black

TARA ULTRA

33 870 875 Product version from 2/26/2015 to 10/30/2024



- 240mm projection
- pivotable spout 360°
- Optional swivel limiter available with swivel limiter set 12 823 970 90
- laminar and spray flow
- height of mixer 500 mm
- height up to laminar flow regulator 240 mm
- hole diameter 35 mm
- 2 x pressure hose with 3/8" cap nut
- 1800 mm metal shower hose
- sprayface with anti-scaling system
- max. flow 5.7 l/min at 3 bar flow pressure
- lead-free
- Flow modes can be changed while the water is running
- This product can help a building meet the requirements of Green Building Rating Systems, e.g. LEED®, BREEAM®, DGNB

Intrinsic protection against back flow.

Push button locks into spray mode when pressed. To switch back to laminar flow the water must be turned off.

	Matte Black	33 870 875-33 0010
	Chrome	33 870 875-00 0010
	Brushed Platinum	33 870 875-06 0010
	Platinum	33 870 875-08 0010
	Durabrand (23kt Gold)	33 870 875-09 0010
	Dark Chrome	33 870 875-19 0010
	Brushed Durabrand (23kt Gold)	33 870 875-28 0010
	Brushed Bronze	33 870 875-42 0010
	Brushed Champagne (22kt Gold)	33 870 875-46 0010
	Champagne (22kt Gold)	33 870 875-47 0010
	Brushed Chrome	33 870 875-93 0010
	Brushed Dark Platinum	33 870 875-99 0010

Recommended miscellaneous

	Swivel limitation set -	12 823 970 90
--	--------------------------------	---------------

Recommended miscellaneous

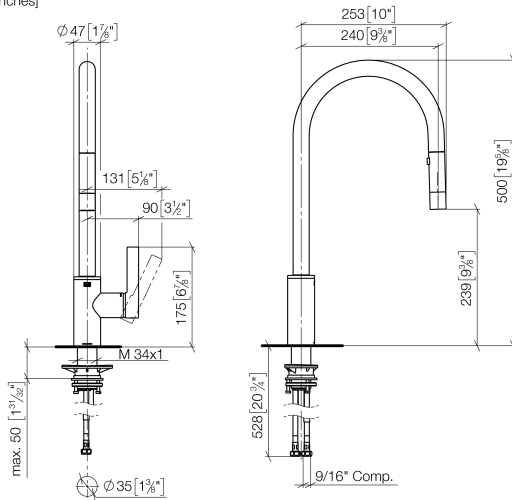
	AIR SWITCH Control button - Matte Black	10 713 970-33
--	--	---------------

Recommended miscellaneous

	Dispenser without rosette - Matte Black	82 424 970-33
--	--	---------------

33 870 875 Product version from 2/26/2015 to 10/30/2024

mm [inches]

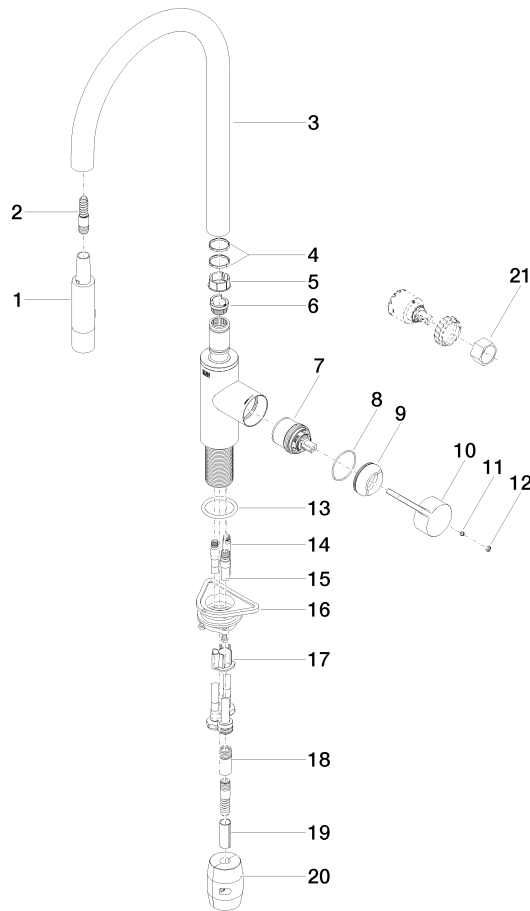


Codes & Standards

ADA	ASME A112.18.1	California Energy Commission (CEC)	cUPC
NSF372	NSF61		

Certificates and sustainability

IAPMO_N-4976 IAPMO_6397 IAPMO_4976 (



Spare parts list

No.	Item Number	Name	Quantity used	Delivery time
5	09 18 40 186 90	sleeve	1.00	2
10	09 20 87 020-33	handle	1.00	2
20	04 21 50 010 00 90	accessories	1.00	2
17	09 20 93 056 90	insert	1.00	2
9	09 28 30 030-33	cover	1.00	2
16	04 30 11 040 00 90	fixing set	1.00	2
4	09 28 10 160 90	ring	2.00	2
19	09 30 03 038 90	hose	1.00	2
13	09 14 10 036 90	seal	1.00	2
8	09 14 10 190 90	seal	1.00	2
14	04 30 04 103 00 90	hose	2.00	2
18	90 24 03 253 01 90	adaptor	1.00	2
12	90 31 20 087 00-33	plug	1.00	30
3	90 28 22 304 00-33	spout	1.00	2
2	04 30 02 120 00-85	hose	1.00	10
15	04 28 20 067 00 90	pipe	1.00	2
6	09 30 11 203 90	ring	1.00	2
21	90 30 09 031 00 90	key	1.00	2
1	90 12 11 148 00-33	shower	1.00	60
11	90 31 11 063 00 90	pin	1.00	2
7	90 15 05 064 05 90	cartridge	1.00	2