

TARA Single-lever mixer Pull-down with spray function - Brushed Champagne (22kt Gold)

TARA

33 870 888 Product version from 2/1/2023 to 10/30/2024



- 240mm projection
- pivotable spout 360°
- Optional swivel limiter available with swivel limiter set 12 823 970 90
- laminar and spray flow
- height of mixer 509 mm
- height up to laminar flow regulator 248 mm
- hole diameter 35 mm
- 2 x pressure hose with 3/8" cap nut
- 1800 mm metal shower hose
- sprayface with anti-scaling system
- max. flow 5.7 l/min at 3 bar flow pressure
- lead-free
- Flow modes can be changed while the water is running
- This product can help a building meet the requirements of Green Building Rating Systems, e.g. LEED®, BREEAM®, DGNB

Intrinsic protection against back flow.

Push button locks into spray mode when pressed. To switch back to laminar flow the water must be turned off.

	Brushed Champagne (22kt Gold)	33 870 888-46 0010
	Chrome	33 870 888-00 0010
	Brushed Platinum	33 870 888-06 0010
	Platinum	33 870 888-08 0010
	Durabrand (23kt Gold)	33 870 888-09 0010
	Dark Chrome	33 870 888-19 0010
	Brushed Durabrand (23kt Gold)	33 870 888-28 0010
	Matte Black	33 870 888-33 0010
	Brushed Bronze	33 870 888-42 0010
	Champagne (22kt Gold)	33 870 888-47 0010
	Brushed Chrome	33 870 888-93 0010
	Brushed Dark Platinum	33 870 888-99 0010

Recommended miscellaneous



Swivel limitation set - 12 823 970 90

Recommended miscellaneous



AIR SWITCH Control button - 10 713 970-46
Brushed Champagne (22kt Gold)

Recommended miscellaneous

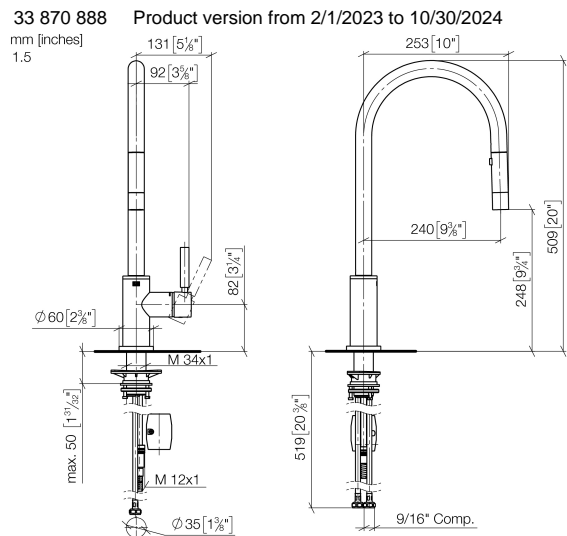


Dispenser with rosette - Brushed Champagne (22kt Gold) 82 444 970-46



TARA Single-lever mixer Pull-down with spray function - Brushed Champagne
(22kt Gold)

TARA



Codes & Standards

ADA	ASME A112.18.1	California Energy Commission (CEC)	cUPC
NSF372	NSF61		

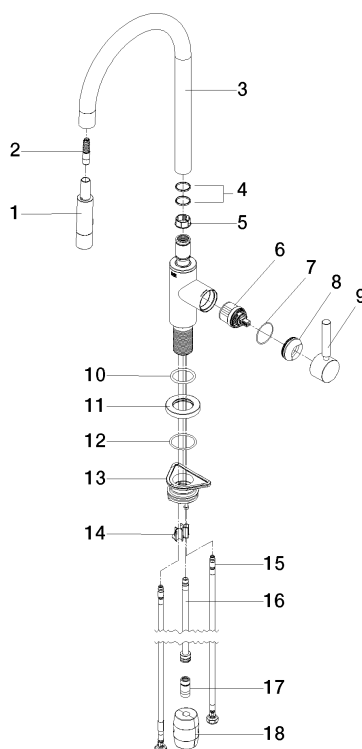
Certificates and sustainability

IAPMO_6397	IAPMO_N-4976	IAPMO_4976 (
------------	--------------	--------------

TARA Single-lever mixer Pull-down with spray function - Brushed Champagne (22kt Gold)

TARA

33 870 888 Product version from 2/1/2023 to 10/30/2024



Spare parts list

No.	Item Number	Name	Quantity used	Delivery time
3	90 28 22 304 00-46	spout	1.00	30
4	09 28 10 160 90	ring	2.00	2
2	04 30 02 120 00-85	hose	1.00	10
5	09 18 40 186 90	sleeve	1.00	2
18	04 21 50 010 00 90	accessories	1.00	2
12	09 14 10 050 90	seal	1.00	2
17	90 24 03 253 01 90	adaptor	1.00	2
16	04 28 20 067 00 90	pipe	1.00	2
11	90 27 22 047 00-46	rosette	1.00	-
Spare part can no longer be ordered, please order the replacement item				
8	09 28 30 030-46	cover	1.00	60
13	04 30 11 040 00 90	fixing set	1.00	2
14	09 20 93 056 90	insert	1.00	2
10	09 14 10 036 90	seal	1.00	2
9	90 20 66 027 00-46	handle	1.00	30
15	04 30 04 103 00 90	hose	2.00	2
1	90 12 11 148 00-46	shower	1.00	60
7	09 14 10 190 90	seal	1.00	2
6	90 15 05 064 05 90	cartridge	1.00	2