

SYNC Single-lever mixer Pull-down with spray function - Brushed Bronze

SYNC

33 870 895 Product version from 2/26/2015



- 240mm projection
- pivotable spout 360°
- Optional swivel limiter available with swivel limiter set 12 821 970 90
- laminar and spray flow
- height of mixer 444 mm
- height up to laminar flow regulator 240 mm
- hole diameter 35 mm
- 2 x pressure hose with 3/8" cap nut
- 1800 mm metal shower hose
- sprayface with anti-scaling system
- max. flow 5.7 l/min at 3 bar flow pressure
- lead-free
- Flow modes can be changed while the water is running
- This product can help a building meet the requirements of Green Building Rating Systems, e.g. LEED®, BREEAM®, DGNB

Intrinsic protection against back flow.

Push button locks into spray mode when pressed. To switch back to laminar flow the water must be turned off.

	Brushed Bronze	33 870 895-42 0010
	Chrome	33 870 895-00 0010
	Brushed Platinum	33 870 895-06 0010
	Platinum	33 870 895-08 0010
	Durabrass (23kt Gold)	33 870 895-09 0010
	Dark Chrome	33 870 895-19 0010
	Brushed Durabrass (23kt Gold)	33 870 895-28 0010
	Matte Black	33 870 895-33 0010
	Brushed Champagne (22kt Gold)	33 870 895-46 0010
	Champagne (22kt Gold)	33 870 895-47 0010
	Brushed Chrome	33 870 895-93 0010
	Brushed Dark Platinum	33 870 895-99 0010

Recommended miscellaneous

Swivel limitation set -

12 821 970 90



Recommended miscellaneous

**AIR SWITCH Control button -
Brushed Bronze**

10 713 970-42



Recommended miscellaneous

**Dispenser without rosette -
Brushed Bronze**

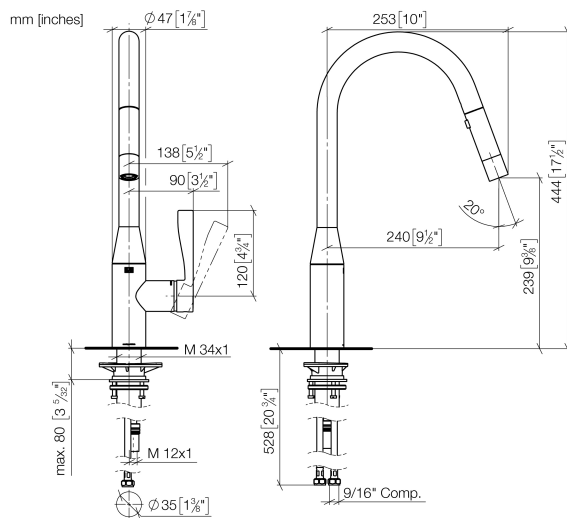
82 424 970-42



SYNC Single-lever mixer Pull-down with spray function - Brushed Bronze

SYNC

33 870 895 Product version from 2/26/2015

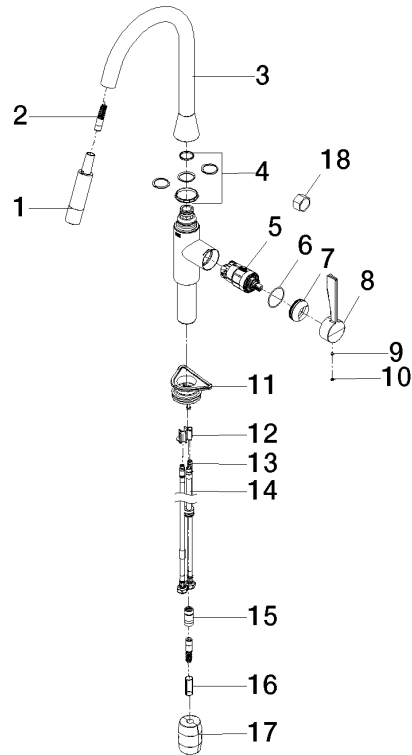


Codes & Standards

ADA	ASME A112.18.1	California Energy Commission (CEC)	cUPC
NSF372	NSF61		

Certificates and sustainability

IAPMO_N-4976 IAPMO_6397 IAPMO_4976 (



Spare parts list

No.	Item Number	Name	Quantity used	Delivery time
	9 90 31 11 063 00 90	pin	1.00	2
	4 12 821 970 90	Swivel limitation set -	1.00	2
	15 90 24 03 253 01 90	adaptor	1.00	2
	18 90 30 09 031 00 90	key	1.00	2
	7 09 28 30 030-42	cover	1.00	60
	10 90 31 20 087 00-42	plug	1.00	30
	8 09 20 89 020-42	handle	1.00	60
	3 90 28 22 302 00-42	spout	1.00	30
	16 09 30 03 038 90	hose	1.00	2
	17 04 21 50 010 00 90	accessories	1.00	2
	6 09 14 10 190 90	seal	1.00	2
	2 04 30 02 120 00-42	hose	1.00	-
Spare part can no longer be ordered, please order the replacement item				
	5 90 15 05 046 05 90	cartridge	1.00	2
	11 04 30 11 040 00 90	fixing set	1.00	2
	13 04 30 04 103 00 90	hose	2.00	2
	1 90 12 11 184 00-42	shower	1.00	30
	14 04 28 20 067 00 90	pipe	1.00	2
	12 09 20 93 056 90	insert	1.00	2