

SYNC Single-lever mixer Pull-down with spray function - Chrome

33 875 895 Product version from 2/26/2015



- 240mm projection
- pivotable spout 360°
- Optional swivel limiter available with swivel limiter set 12 821 970 90
- laminar and spray flow
- height of mixer 420 mm
- height up to laminar flow regulator 240 mm
- hole diameter 35 mm
- 2 x pressure hose with 3/8" cap nut
- 1800 mm metal shower hose
- sprayface with anti-scaling system
- max. flow 5.7 l/min at 3 bar flow pressure
- lead-free
- Flow modes can be changed while the water is running
- This product can help a building meet the requirements of Green Building Rating Systems, e.g. LEED®, BREEAM®, DGNB

Intrinsic protection against back flow.

Push button locks into spray mode when pressed. To switch back to laminar flow the water must be turned off.

	Chrome	33 875 895-00 0010
	Brushed Platinum	33 875 895-06 0010
	Platinum	33 875 895-08 0010
	Durabronze (23kt Gold)	33 875 895-09 0010
	Dark Chrome	33 875 895-19 0010
	Brushed Durabronze (23kt Gold)	33 875 895-28 0010
	Matte Black	33 875 895-33 0010
	Brushed Bronze	33 875 895-42 0010
	Brushed Champagne (22kt Gold)	33 875 895-46 0010
	Champagne (22kt Gold)	33 875 895-47 0010
	Brushed Chrome	33 875 895-93 0010
	Brushed Dark Platinum	33 875 895-99 0010

Recommended miscellaneous

Swivel limitation set -

12 821 970 90



Recommended miscellaneous

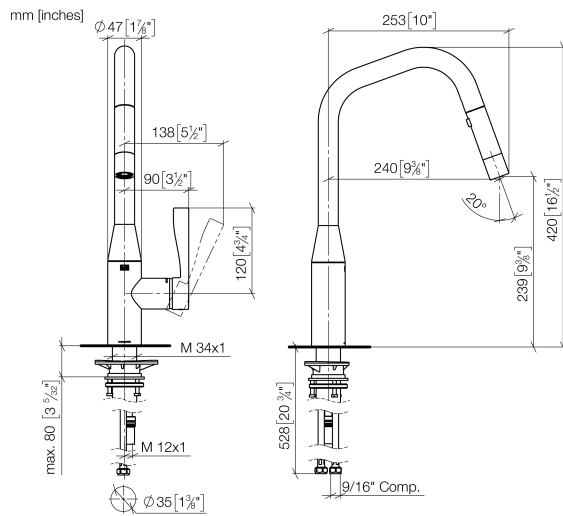
AIR SWITCH Control button - Chrome

10 713 970-00

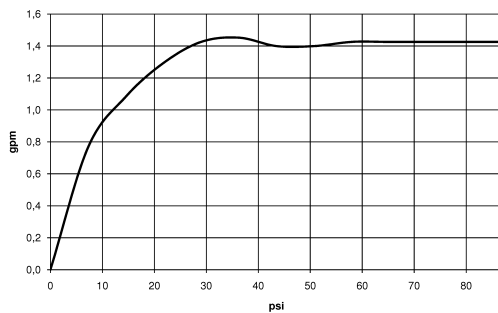


SYNC Single-lever mixer Pull-down with spray function - Chrome

33 875 895 Product version from 2/26/2015



Flow rate chart



Codes & Standards

ADA	ASME A112.18.1	ASME A112.18.1/CSA B125.1	California Energy Commission (CEC)
cUPC	NSF/ANSI 372	NSF/ANSI/CAN 61	NSF372
NSF61			



SYNC Single-lever mixer Pull-down with spray function - Chrome

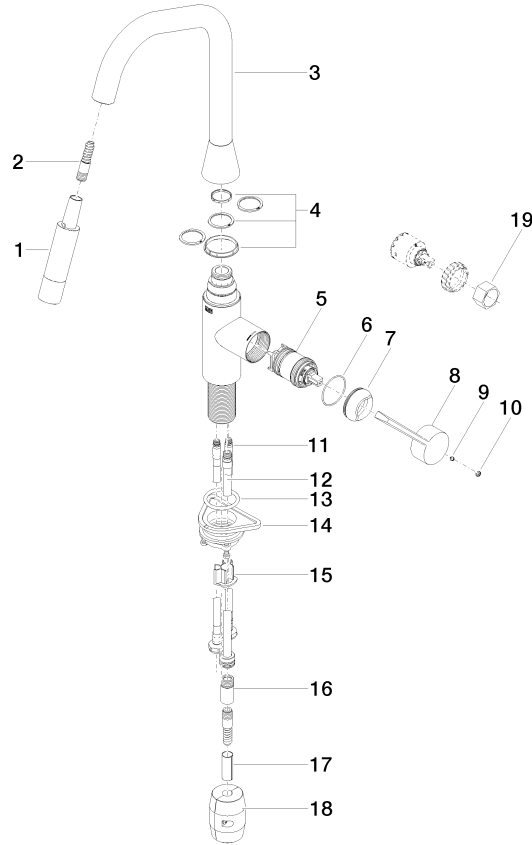
33 875 895 Product version from 2/26/2015

Certificates

IAPMO_N-4976 IAPMO_6397 IAPMO_4976 (

SYNC Single-lever mixer Pull-down with spray function - Chrome

33 875 895 Product version from 2/26/2015



Spare parts list

No.	Item Number	Name	Quantity used	Delivery time
1	90 12 11 148 00-00	shower	1	60
2	04 30 02 120 00-00	hose	1	10
3	90 28 22 301 00-00	spout	1	10
4	90 28 10 161 00 90	set	1	2
5	90 15 05 064 05 90	cartridge	1	2
6	09 14 10 190 90	seal	1	2
7	09 28 30 030-00	cover	1	10
8	09 20 89 020-00	handle	1	10
9	90 31 11 063 00 90	pin	1	2
10	90 31 20 087 00-00	plug	1	10
11	04 30 04 103 00 90	hose	2	2
12	04 28 20 067 00 90	pipe	1	2
13	09 14 10 036 90	seal	1	2
14	04 30 11 040 00 90	fixing set	1	2
15	09 20 93 056 90	insert	1	2
16	90 24 03 253 01 90	adaptor	1	2
17	09 30 03 038 90	hose	1	2
18	04 21 50 010 00 90	accessories	1	2
19	90 30 09 031 00 90	key	1	2