

## SYNC Single-lever mixer Pull-down with spray function - Brushed Platinum

33 875 895 Product version from 2/26/2015



- 240mm projection
- pivotable spout 360°
- Optional swivel limiter available with swivel limiter set 12 821 970 90
- laminar and spray flow
- height of mixer 420 mm
- height up to laminar flow regulator 240 mm
- hole diameter 35 mm
- 2 x pressure hose with 3/8" cap nut
- 1800 mm metal shower hose
- sprayface with anti-scaling system
- max. flow 5.7 l/min at 3 bar flow pressure
- lead-free
- Flow modes can be changed while the water is running
- This product can help a building meet the requirements of Green Building Rating Systems, e.g. LEED®, BREEAM®, DGNB

Intrinsic protection against back flow.

Push button locks into spray mode when pressed. To switch back to laminar flow the water must be turned off.

	Brushed Platinum	33 875 895-06 0010
	Chrome	33 875 895-00 0010
	Platinum	33 875 895-08 0010
	Durabrass (23kt Gold)	33 875 895-09 0010
	Dark Chrome	33 875 895-19 0010
	Brushed Durabrass (23kt Gold)	33 875 895-28 0010
	Matte Black	33 875 895-33 0010
	Brushed Bronze	33 875 895-42 0010
	Brushed Champagne (22kt Gold)	33 875 895-46 0010
	Champagne (22kt Gold)	33 875 895-47 0010
	Brushed Chrome	33 875 895-93 0010
	Brushed Dark Platinum	33 875 895-99 0010

### Recommended miscellaneous

**Swivel limitation set -**

12 821 970 90



### Recommended miscellaneous

**AIR SWITCH Control button -  
Brushed Platinum**

10 713 970-06



### Recommended miscellaneous

**Dispenser without rosette -  
Brushed Platinum**

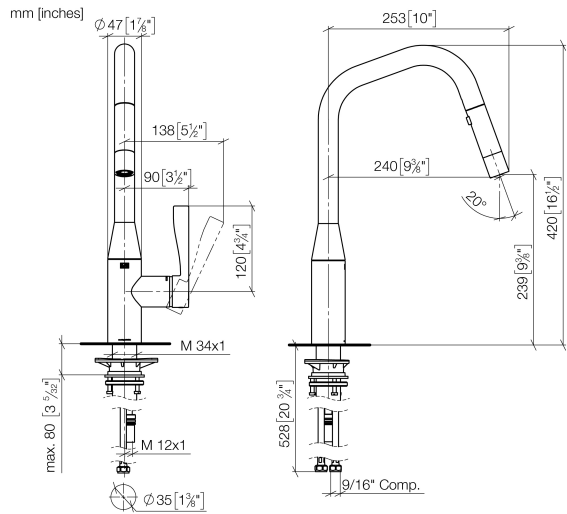
82 424 970-06



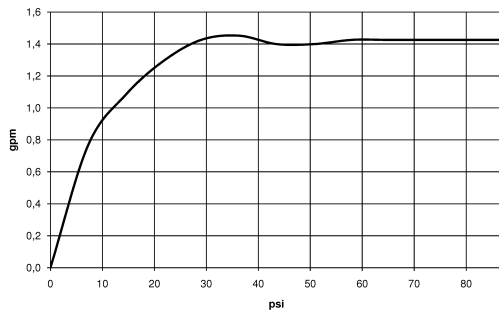


SYNC Single-lever mixer Pull-down with spray function - Brushed Platinum

33 875 895    Product version from 2/26/2015



Flow rate chart



Codes & Standards

ADA	ASME A112.18.1	ASME A112.18.1/CSA B125.1	California Energy Commission (CEC)
cUPC	NSF/ANSI 372	NSF/ANSI/CAN 61	NSF372
NSF61			



## SYNC Single-lever mixer Pull-down with spray function - Brushed Platinum

---

33 875 895 Product version from 2/26/2015

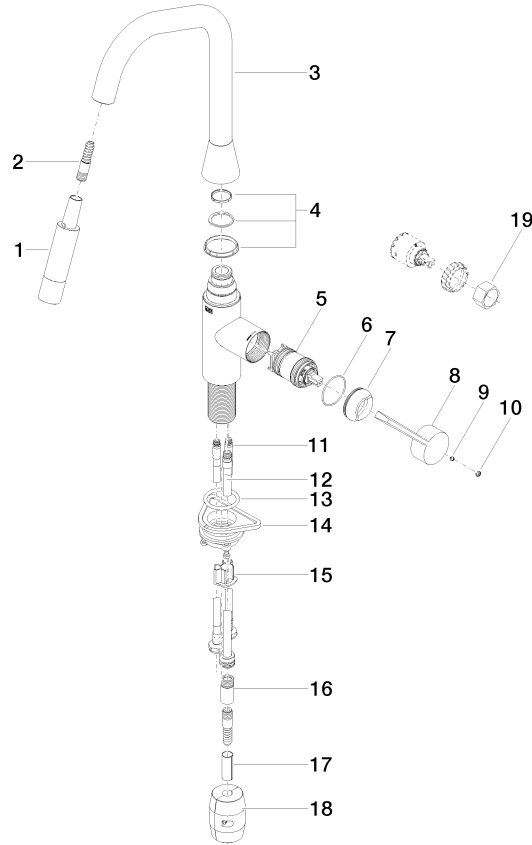
### Certificates

---

IAPMO\_N-4976      IAPMO\_6397      IAPMO\_4976 (

## SYNC Single-lever mixer Pull-down with spray function - Brushed Platinum

33 875 895 Product version from 2/26/2015



### Spare parts list

No.	Item Number	Name	Quantity used	Delivery time
1	90 12 11 148 00-06	shower	1	10
2	04 30 02 120 00-85	hose	1	10
3	90 28 22 301 00-06	spout	1	10
4	90 28 10 161 00 90	set	1	2
5	90 15 05 064 05 90	cartridge	1	2
6	09 14 10 190 90	seal	1	2
7	09 28 30 030-06	cover	1	10
8	09 20 89 020-06	handle	1	10
9	90 31 11 063 00 90	pin	1	2
10	90 31 20 087 00-06	plug	1	10
11	04 30 04 103 00 90	hose	2	2
12	04 28 20 067 00 90	pipe	1	2
13	09 14 10 036 90	seal	1	2
14	04 30 11 040 00 90	fixing set	1	2
15	09 20 93 056 90	insert	1	2
16	90 24 03 253 01 90	adaptor	1	2
17	09 30 03 038 90	hose	1	2
18	04 21 50 010 00 90	accessories	1	2
19	90 30 09 031 00 90	key	1	2