

SYNC Single-lever mixer Pull-down with spray function - Brushed Bronze

33 875 895 Product version from 2/26/2015



- 240mm projection
- pivotable spout 360°
- Optional swivel limiter available with swivel limiter set 12 821 970 90
- laminar and spray flow
- height of mixer 420 mm
- height up to laminar flow regulator 240 mm
- hole diameter 35 mm
- 2 x pressure hose with 3/8" cap nut
- 1800 mm metal shower hose
- sprayface with anti-scaling system
- max. flow 5.7 l/min at 3 bar flow pressure
- lead-free
- Flow modes can be changed while the water is running
- This product can help a building meet the requirements of Green Building Rating Systems, e.g. LEED®, BREEAM®, DGNB

Intrinsic protection against back flow.

Push button locks into spray mode when pressed. To switch back to laminar flow the water must be turned off.

| | | |
|---|--------------------------------|--------------------|
|  | Brushed Bronze | 33 875 895-42 0010 |
|  | Chrome | 33 875 895-00 0010 |
|  | Brushed Platinum | 33 875 895-06 0010 |
|  | Platinum | 33 875 895-08 0010 |
|  | Durabronze (23kt Gold) | 33 875 895-09 0010 |
|  | Dark Chrome | 33 875 895-19 0010 |
|  | Brushed Durabronze (23kt Gold) | 33 875 895-28 0010 |
|  | Matte Black | 33 875 895-33 0010 |
|  | Brushed Champagne (22kt Gold) | 33 875 895-46 0010 |
|  | Champagne (22kt Gold) | 33 875 895-47 0010 |
|  | Brushed Chrome | 33 875 895-93 0010 |
|  | Brushed Dark Platinum | 33 875 895-99 0010 |

Recommended miscellaneous

Swivel limitation set -

12 821 970 90



Recommended miscellaneous

**AIR SWITCH Control button -
Brushed Bronze**

10 713 970-42



Recommended miscellaneous

**Dispenser without rosette -
Brushed Bronze**

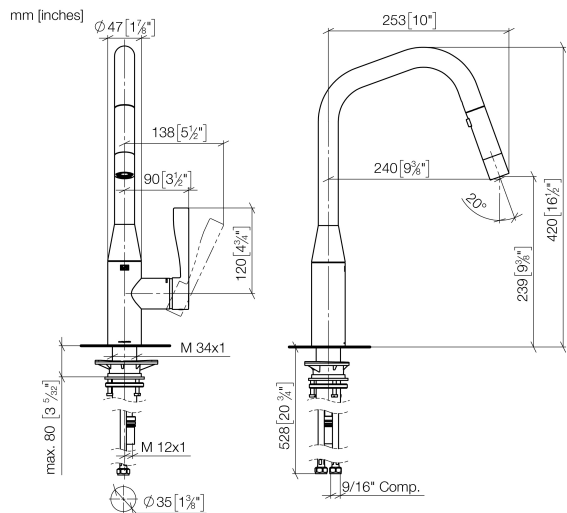
82 424 970-42





SYNC Single-lever mixer Pull-down with spray function - Brushed Bronze

33 875 895 Product version from 2/26/2015



Flow rate chart



Codes & Standards

| | | | |
|-------|----------------|---------------------------|------------------------------------|
| ADA | ASME A112.18.1 | ASME A112.18.1/CSA B125.1 | California Energy Commission (CEC) |
| cUPC | NSF/ANSI 372 | NSF/ANSI/CAN 61 | NSF372 |
| NSF61 | | | |



SYNC Single-lever mixer Pull-down with spray function - Brushed Bronze

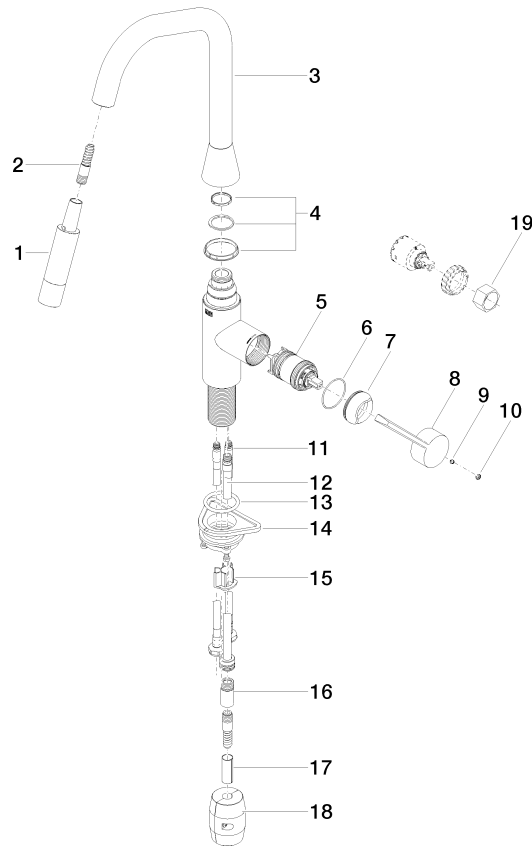
33 875 895 Product version from 2/26/2015

Certificates

IAPMO_N-4976 IAPMO_6397 IAPMO_4976 (

SYNC Single-lever mixer Pull-down with spray function - Brushed Bronze

33 875 895 Product version from 2/26/2015



Spare parts list

| No. | Item Number | Name | Quantity used | Delivery time |
|-----|--------------------|-------------|---------------|---------------|
| 1 | 90 12 11 148 00-42 | shower | 1 | 30 |
| 2 | 04 30 02 120 00-85 | hose | 1 | 10 |
| 3 | 90 28 22 301 00-42 | spout | 1 | 30 |
| 4 | 90 28 10 161 00 90 | set | 1 | 2 |
| 5 | 90 15 05 064 05 90 | cartridge | 1 | 2 |
| 6 | 09 14 10 190 90 | seal | 1 | 2 |
| 7 | 09 28 30 030-42 | cover | 1 | 60 |
| 8 | 09 20 89 020-42 | handle | 1 | 60 |
| 9 | 90 31 11 063 00 90 | pin | 1 | 2 |
| 10 | 90 31 20 087 00-42 | plug | 1 | 30 |
| 11 | 04 30 04 103 00 90 | hose | 2 | 2 |
| 12 | 04 28 20 067 00 90 | pipe | 1 | 2 |
| 13 | 09 14 10 036 90 | seal | 1 | 2 |
| 14 | 04 30 11 040 00 90 | fixing set | 1 | 2 |
| 15 | 09 20 93 056 90 | insert | 1 | 2 |
| 16 | 90 24 03 253 01 90 | adaptor | 1 | 2 |
| 17 | 09 30 03 038 90 | hose | 1 | 2 |
| 18 | 04 21 50 010 00 90 | accessories | 1 | 2 |
| 19 | 90 30 09 031 00 90 | key | 1 | 2 |