

TARA Profi single-lever mixer - Platinum






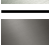
TARA

33 880 888



- 200mm projection
- pivotable spout 360°
- air-enriched flow and spray flow
- height of mixer 415 mm
- test
- height up to aerator 275 mm
- hole diameter 35 mm
- 2 x pressure hose with 3/8" cap nut
- sprayface with anti-scaling system
- max. flow 5.7 l/min at 3 bar flow pressure
- lead-free
- This product can help a building meet the requirements of Green Building Rating Systems, e.g. LEED®, BREEAM®, DGNB

Intrinsic protection against back flow.

	Platinum	33 880 888-08 0010
	Chrome	33 880 888-00 0010
	Brushed Platinum	33 880 888-06 0010
	Dark Chrome	33 880 888-19 0010
	Brushed Chrome	33 880 888-93 0010
	Brushed Dark Platinum	33 880 888-99 0010

Recommended miscellaneous

**AIR SWITCH Control button -
Platinum**

10 713 970-08



Recommended miscellaneous

Dispenser with rosette - Platinum 82 444 970-08

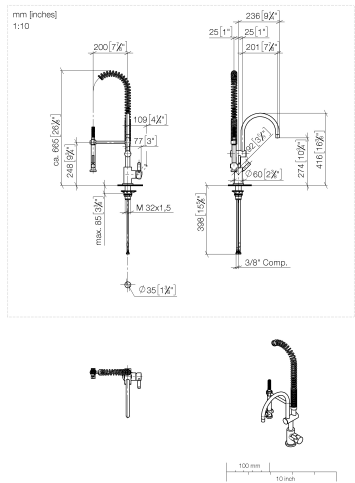




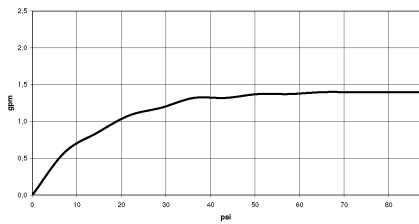
TARA Profi single-lever mixer - Platinum

TARA

33 880 888



Flow rate chart



Codes & Standards

ADA	ASME A112.18.1	ASME A112.18.1/CSA B125.1	California Energy Commission (CEC)
cUPC	NSF/ANSI 372	NSF/ANSI/CAN 61	NSF372
NSF61			



TARA Profi single-lever mixer - Platinum

TARA

33 880 888

Certificates

IAPMO_4976

IAPMO_6397

IAPMO_N-4976

33 880 888

Product version up to 5/31/2010

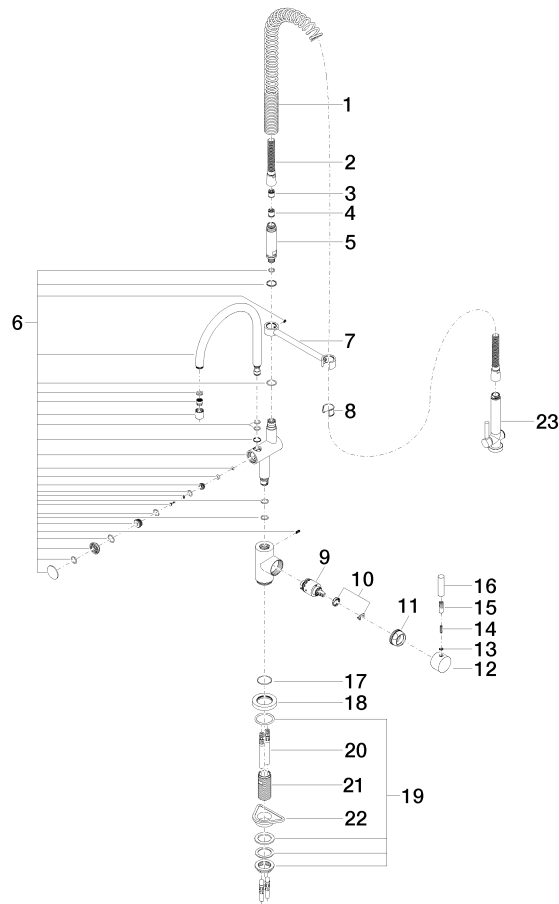
Product version from 5/31/2010 to 7/23/2018

Product version from 7/23/2018 to 9/5/2018

Product version from 9/5/2018 to 5/3/2021

Product version from 5/3/2021

Parts for other
finishes can be found
here: [Chrome](#)





TARA Profi single-lever mixer - Platinum

TARA

33 880 888

Spare parts list

Product version up to 5/31/2010

Product version from 5/31/2010 to 7/23/2018

Product version from 7/23/2018 to 9/5/2018

Product version from 9/5/2018 to 5/3/2021

Product version from 5/3/2021

No.	Item Number	Name	Quantity used	Delivery time
	09 16 02 034 90	spring	24	2