

TARA Profi single-lever mixer - Brushed Chrome







TARA

33 880 888



- 200mm projection
- pivotable spout 360°
- air-enriched flow and spray flow
- height of mixer 415 mm
- test
- height up to aerator 275 mm
- hole diameter 35 mm
- 2 x pressure hose with 3/8" cap nut
- sprayface with anti-scaling system
- max. flow 5.7 l/min at 3 bar flow pressure
- lead-free
- This product can help a building meet the requirements of Green Building Rating Systems, e.g. LEED®, BREEAM®, DGNB

Intrinsic protection against back flow.

	Brushed Chrome	33 880 888-93 0010
	Chrome	33 880 888-00 0010
	Brushed Platinum	33 880 888-06 0010
	Platinum	33 880 888-08 0010
	Dark Chrome	33 880 888-19 0010
	Brushed Dark Platinum	33 880 888-99 0010

Recommended miscellaneous

**AIR SWITCH Control button -
Brushed Chrome**

10 713 970-93



Recommended miscellaneous

**Dispenser with rosette - Brushed
Chrome**

82 444 970-93

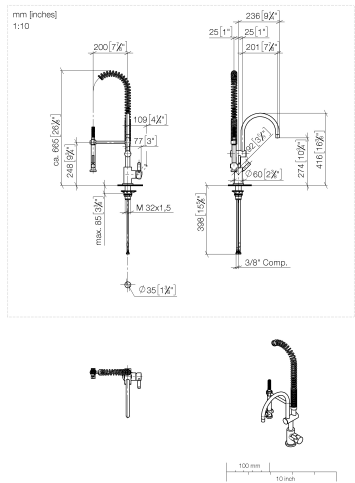




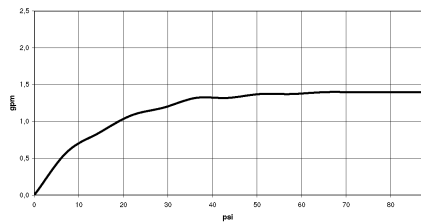
TARA Profi single-lever mixer - Brushed Chrome

TARA

33 880 888



Flow rate chart



Codes & Standards

ADA	ASME A112.18.1/CSA B125.1	California Energy Commission (CEC)	NSF/ANSI 372
NSF/ANSI/CAN 61	NSF372	NSF61	



TARA Profi single-lever mixer - Brushed Chrome

TARA

33 880 888

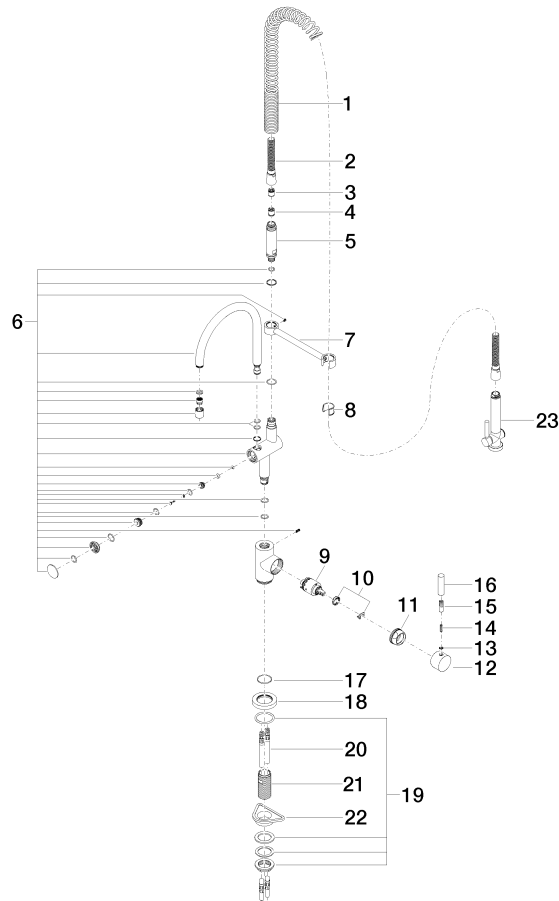
Certificates

IAPMO_6397

IAPMO_N-4976

Product version from 5/3/2021

Parts for other
finishes can be found
here: [Chrome](#)





TARA Profi single-lever mixer - Brushed Chrome

TARA

33 880 888

Spare parts list

Product version from 5/3/2021