

MADISON Showerpipe with shower thermostat without hand shower - Brushed Dark Platinum

MADISON

34 459 360





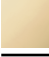
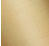


- shower with fixed riser projection 420mm
 - overhead shower: rain flow
 - rain shower Ø 200 mm
 - rain shower with anti-scale system
 - max. rainshower flow 6.8 l/min
 - rotary diverter for fixed-riser shower/hand shower
 - height of fittings up to rain shower (bottom edge) 985mm
 - height of fittings up to top edge of elbow 1160mm
 - two-part push-on rosette Ø 65 mm
 - rosette for shower holder Ø 65mm
 - rosette for wall mounting Ø 60mm
 - gauge 150 mm - 13 mm
 - metal shower hose 1250mm with integrated anti-twist protection
 - 1/2" connection
 - Pipe diameter 20 mm
 - This product reduces water consumption by % (compared to requirements of EPAct '92)
 - This product can contribute to Water Use Reduction in LEED® Green Building Rating
- Intrinsic protection against back flow.**

NOTE: Hand shower sold separately. Please see hand shower options under the miscellaneous articles section of each series.

Intrinsic protection against back flow.

NOTE: Hand shower sold separately. Please see hand shower options under the miscellaneous articles section of each series.

	Brushed Dark Platinum	34 459 360-99 0010
	Chrome	34 459 360-00 0010
	Brushed Platinum	34 459 360-06 0010
	Platinum	34 459 360-08 0010
	Durabrand (23kt Gold)	34 459 360-09 0010
	Brushed Durabrand (23kt Gold)	34 459 360-28 0010

Required miscellaneous



- Concealed adapter -** 35 080 970-90
- please order two adapters (USA only) 0010

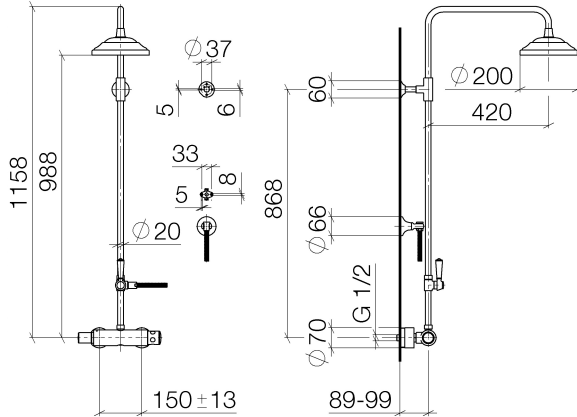


MADISON Showerpipe with shower thermostat without hand shower - Brushed Dark Platinum

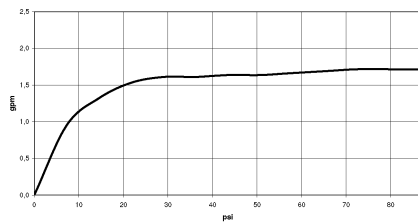
MADISON

34 459 360

1:10



Flow rate chart



Codes & Standards

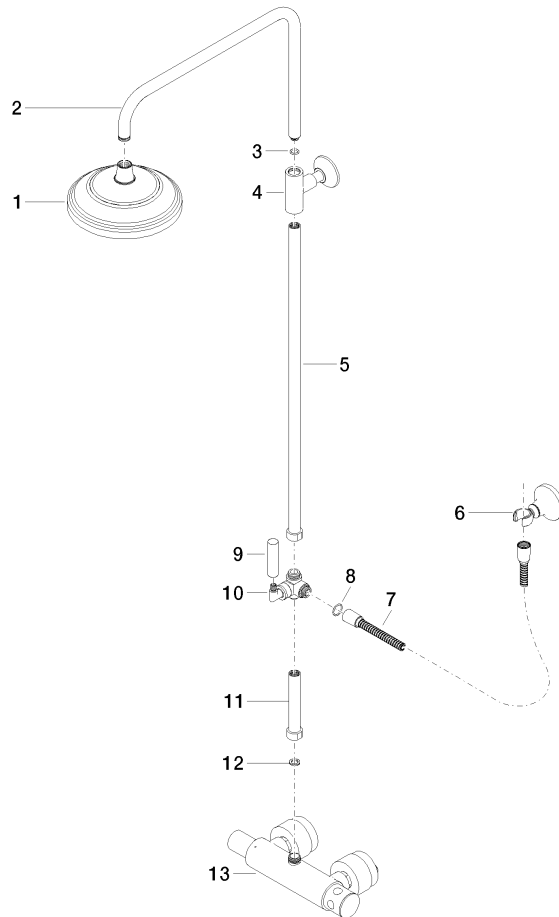
ASME
A112.18.1/CSA
B125.1

California Energy
Commission
(CEC)

**MADISON Showerpipe with shower thermostat without hand shower - Brushed
Dark Platinum**

MADISON

34 459 360





MADISON Showerpipe with shower thermostat without hand shower - Brushed
Dark Platinum

MADISON

34 459 360

Spare parts list

No.	Item Number	Name	Quantity used	Delivery time
	04 12 05 038 30-99	shower	17	30