

## Showerpipe with shower thermostat without hand shower 220 mm - Platinum

TARA

34 459 892



Fits: TARA, VAIA, META

- shower with fixed riser projection 452mm
  - overhead shower: rain flow
  - rain shower Ø 220 mm
  - rain shower with anti-scale system
  - max. rainshower flow 6.8 l/min
  - rotary diverter with volume control and shut-off function
  - slide-on rosettes Ø 70 mm
  - height of fittings up to rain shower (bottom edge) 963mm
  - height of fittings up to top edge of elbow 1267mm
  - gauge 150 mm - 13 mm
  - metal shower hose 1750mm with integrated anti-twist protection
  - 1/2" connection
  - slide bar
  - Pipe diameter 23.5 mm
  - quick clearing
  - This product reduces water consumption by % (compared to requirements of EPAct '92)
  - This product can contribute to Water Use Reduction in LEED® Green Building Rating
- Intrinsic protection against back flow.**

**NOTE: Hand shower sold separately. Please see hand shower options under the miscellaneous articles section of each series.**

Intrinsic protection against back flow.

NOTE: Hand shower sold separately. Please see hand shower options under the miscellaneous articles section of each series.

	Platinum	34 459 892-08 0010
	Chrome	34 459 892-00 0010
	Brushed Platinum	34 459 892-06 0010
	Dark Chrome	34 459 892-19 0010
	Brushed Durabronze (23kt Gold)	34 459 892-28 0010
	Matte Black	34 459 892-33 0010
	Brushed Champagne (22kt Gold)	34 459 892-46 0010
	Champagne (22kt Gold)	34 459 892-47 0010
	Brushed Chrome	34 459 892-93 0010
	Brushed Dark Platinum	34 459 892-99 0010

### Required miscellaneous



**Concealed adapter -** 35 080 970-90  
 •please order two adapters (USA only) 0010

### Required miscellaneous



**Hand shower FlowReduce -** 28 012 979-08  
**Platinum** 0010

### Required miscellaneous



**Hand shower FlowReduce -** 28 016 979-08  
**Platinum** 0010

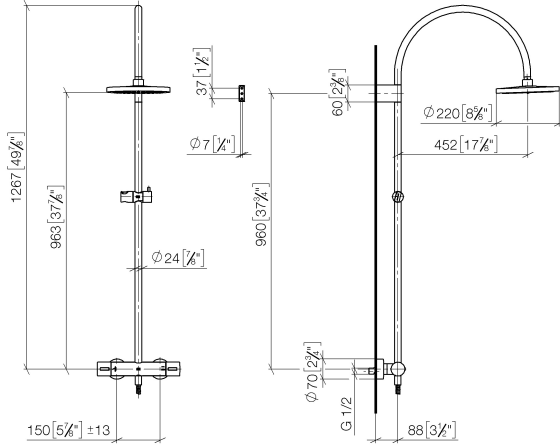
### Required miscellaneous



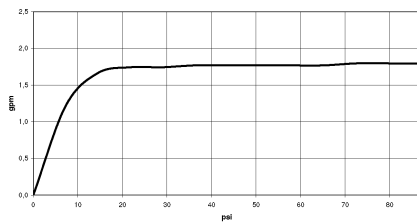
**Hand shower FlowReduce -** 28 018 979-08  
**Platinum** 0010

34 459 892

mm [inches]  
M 1:10



## Flow rate chart

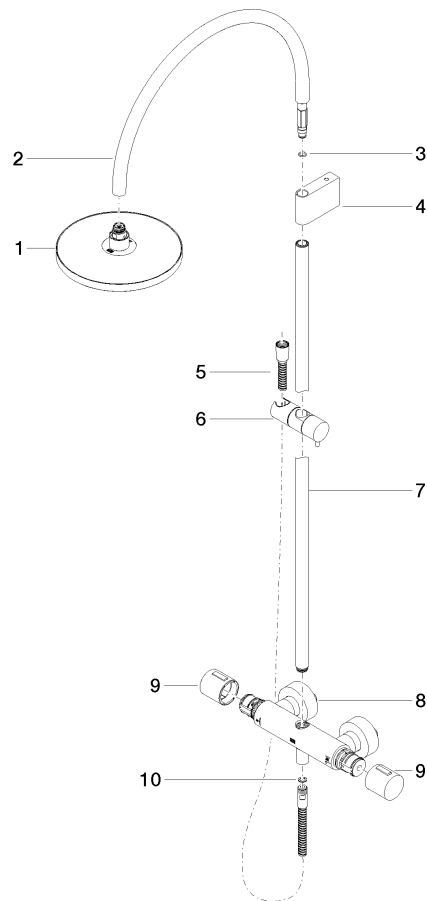


## Codes & Standards

ASME  
A112.18.1/CSA  
B125.1

California Energy  
Commission  
(CEC)

34 459 892



## Spare parts list

No.	Item Number	Name	Quantity used	Delivery time
1	04 12 05 092 10-08	shower	1	40
2	04 28 22 346 00-08	pipe	1	40
3	09 14 10 008 90	seal	1	2
4	90 17 11 150 00-08	holder	1	40
5	28 322 970-08	Metal shower hose 1/2" x 3/8" x 1750 mm - Platinum	1	40
6	12 570 970-08	Slide unit - Platinum	1	40
7	90 28 22 349 00-08	pipe	1	40
8	04 17 01 250 00-08	connection	1	40
9	90 17 33 015 00-08	handle	2	40
10	90 14 20 026 00 90	seal	1	2