

# Showerpipe with shower thermostat without hand shower - Brushed Platinum

IMO

34 459 980



Fits: IMO, MEM, CL.1, CYO

- shower with fixed riser projection 453mm
  - overhead shower: rain flow
  - rain shower 300 x 240mm
  - rain shower with anti-scale system
  - max. rainshower flow 6.8 l/min
  - Function from: 6 l/min
  - rotary diverter with volume control and shut-off function
  - slide-on rosettes Ø 70 mm
  - height of fittings up to rain shower (bottom edge) 1009mm
  - height of fittings up to top edge of elbow 1150mm
  - gauge 150 mm - 13 mm
  - metal shower hose 1750mm with integrated anti-twist protection
  - 1/2" connection
  - slide bar
  - Pipe diameter 23.5 mm
  - quick clearing
  - This product reduces water consumption by % (compared to requirements of EPA '92)
  - This product can contribute to Water Use Reduction in LEED® Green Building Rating
- Intrinsic protection against back flow.**

**NOTE: Hand shower sold separately. Please see hand shower options under the miscellaneous articles section of each series.**

Intrinsic protection against back flow.

NOTE: Hand shower sold separately. Please see hand shower options under the miscellaneous articles section of each series.

	Brushed Platinum	34 459 980-06 0010
	Chrome	34 459 980-00 0010
	Platinum	34 459 980-08 0010
	Dark Chrome	34 459 980-19 0010
	Brushed Light Gold	34 459 980-27 0010
	Brushed Durabronze (23kt Gold)	34 459 980-28 0010
	Matte Black	34 459 980-33 0010
	Brushed Champagne (22kt Gold)	34 459 980-46 0010
	Champagne (22kt Gold)	34 459 980-47 0010
	Brushed Chrome	34 459 980-93 0010
	Brushed Dark Platinum	34 459 980-99 0010

## Required miscellaneous



**Concealed adapter -** 35 080 970-90  
 •please order two adapters (USA only) 0010

## Required miscellaneous



**Hand shower FlowReduce -** 28 012 979-06  
**Brushed Platinum** 0010

## Required miscellaneous



**SERIES-VARIOUS Hand shower -** 28 029 979-06  
**Brushed Platinum** 0010

## Required miscellaneous



**SERIES-VARIOUS Hand shower -** 28 025 979-06  
**Brushed Platinum** 0010

## Required miscellaneous



**Hand shower FlowReduce -** 28 016 979-06  
**Brushed Platinum** 0010

## Required miscellaneous



**Hand shower FlowReduce -** 28 018 979-06  
**Brushed Platinum** 0010

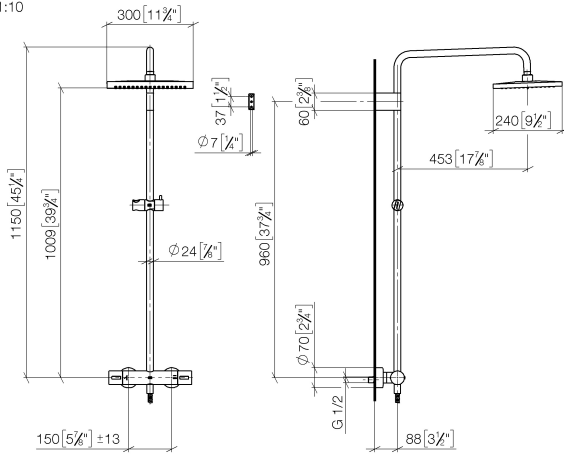
## Required miscellaneous



**SERIES-VARIOUS Hand shower -** 28 027 979-06  
**Brushed Platinum** 0010

34 459 980

mm [inches]  
1:10



## Flow rate chart

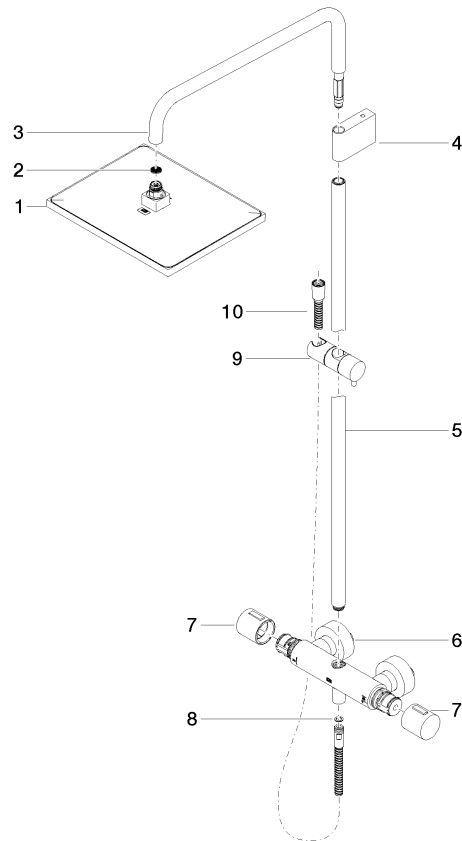


## Codes & Standards

ASME  
A112.18.1/CSA  
B125.1

California Energy  
Commission  
(CEC)

**Product version from 6/1/2024**





## Showerpipe with shower thermostat without hand shower - Brushed Platinum

IMO

34 459 980

### Spare parts list

#### Product version from 6/1/2024

No.	Item Number	Name	Quantity used	Delivery time
	04 12 05 063 10-06	shower	10	10