

## Concealed two-way diverter -

---

35 202 970



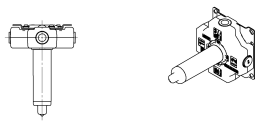
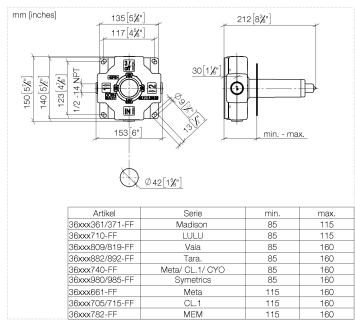
- red brass, lead-free
- 1x male 1/2" connector
- 2x female thread 1/2" outlet
- cut-to-length spindle and sleeve
- dust cover
- anti-water packing
- soundproofing

NOTE: Important for certain series!  
Due to minimum rough-in requirements, a framing  
of 2x6 studs is needed.

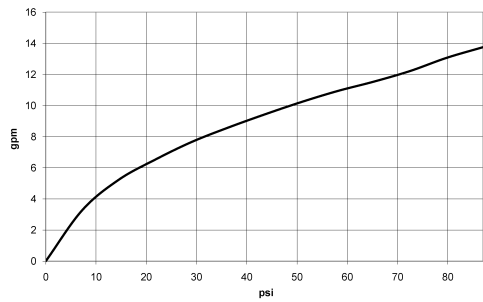


Concealed two-way diverter -

35 202 970



Flow rate chart



Codes & Standards

ASME A112.18.1      cUPC



## Concealed two-way diverter -

---

35 202 970

### Certificates

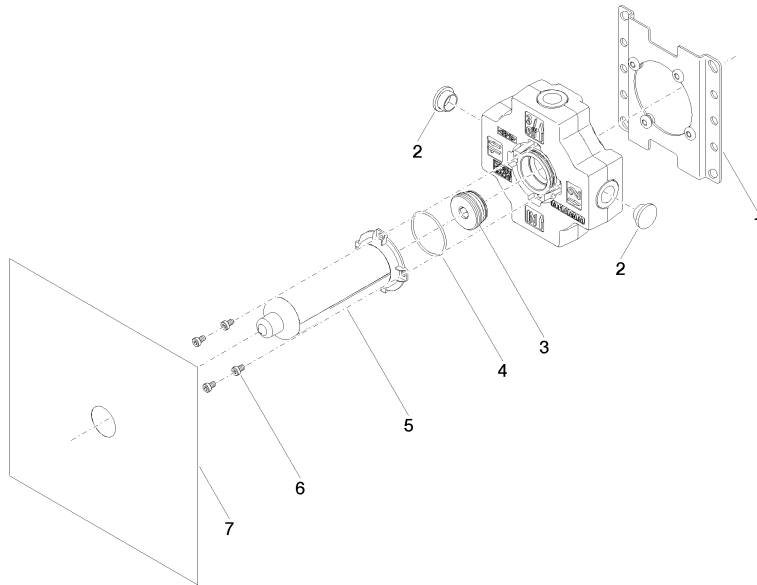
---

IAPMO\_4976

## Concealed two-way diverter -

35 202 970

**Product version from 4/1/2022**





## Concealed two-way diverter -

---

35 202 970

### Spare parts list

#### Product version from 4/1/2022

No.	Item Number	Name	Quantity used	Delivery time
	04 17 20 252 00 90	base	13	60