

xTOOL Concealed thermostat module -

35 517 970



- red brass, lead-free
- 2x back flow preventer
- integrated pre-seals
- 3/4" (cold/hot) connection
- female thread 3/4" connection
- thermostat cartridge
- dust cover
- anti-water packing
- soundproofing

Recommended miscellaneous

Extension 28 mm -

12 177 970 90



Recommended miscellaneous

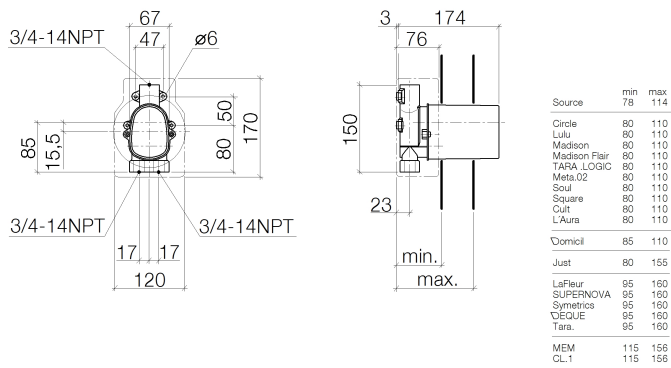
Extension 46 mm -

12 178 970 90

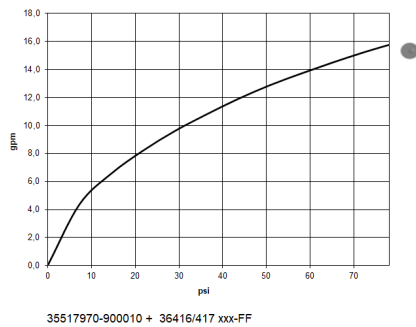


xTOOL Concealed thermostat module -

35 517 970



Flow rate chart



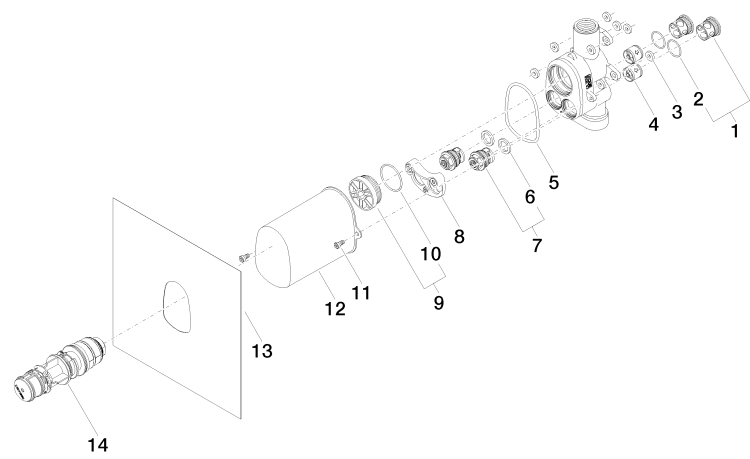
35517970-900010 + 36416/417 xxx-FF

Certificates

IAPMO_4976 (3).

xTOOL Concealed thermostat module -

35 517 970



Spare parts list

No.	Item Number	Name	Quantity used	Delivery time
1	04 21 34 077 00 90	nipple	2	2
2	09 14 10 098 90	seal	2	2
3	04 14 05 045 00 90	set	8	2
4	90 23 01 045 00 90	back-flow preventer	2	2
5	09 14 10 189 90	seal	1	2
6	09 14 05 002 90	seal	2	2
7	90 29 05 031 00 90	insert	2	2
8	90 12 12 218 00 90	base	1	2
9	04 31 20 100 00 90	plug	1	2
10	09 14 10 111 90	seal	1	2
11	90 30 30 027 00 90	screw	2	2
12	09 21 02 103 90	cap	1	2
13	04 14 03 073 04 90	gasket kit	1	2
14	90 15 02 065 00 90	cartridge	1	2