

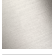






MADISON Concealed two-way diverter - Platinum
MADISON

36 200 361
Product version from 4/1/2022



- rotary diverter
- rosette Ø 60 mm
- NEUTRAL porcelain insert
- with shut-off function

	Platinum	36 200 361-08 0010
	Chrome	36 200 361-00 0010
	Brushed Platinum	36 200 361-06 0010
	Durabrand (23kt Gold)	36 200 361-09 0010
	Brushed Durabrand (23kt Gold)	36 200 361-28 0010
	Brushed Dark Brass	36 200 361-39 0010
	Brushed Dark Platinum	36 200 361-99 0010

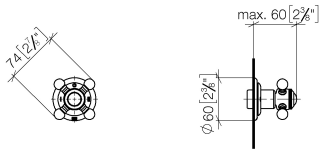
Required miscellaneous



- Concealed two-way diverter -

35 202 970-90
0010
- min. recess depth 85 mm
 - max. recess depth 155 mm

mm [inches]

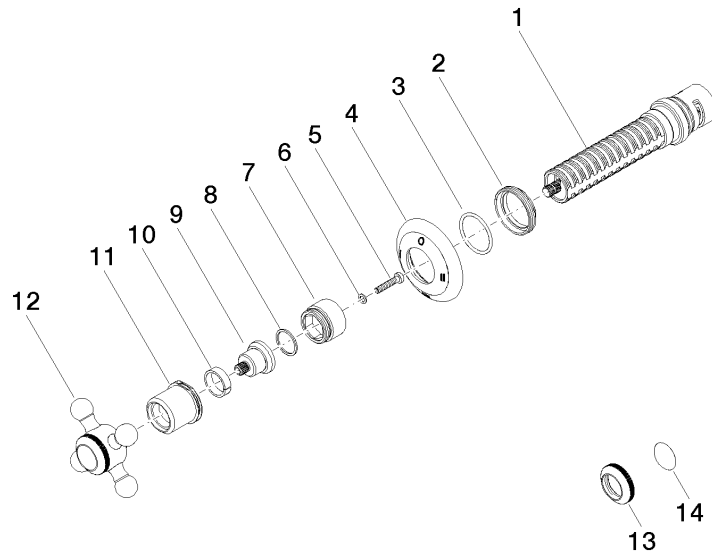


Codes & Standards

ADA	ASME A112.18.1	California Energy Commission (CEC)	cUPC
-----	----------------	--	------

Certificates and sustainability

IAPMO_4976 (



Spare parts list

No.	Item Number	Name	Quantity used	Delivery time
14	09 26 01 016 90	accessories	1.00	2
2	09 23 10 125-00	nut	1.00	10
4	09 27 36 103-08	rosette	1.00	60
13	09 20 36 005-08	handle	1.00	40
1	90 90 03 306 10 90	diverter	1.00	2
12	04 20 36 100 02-08	handle	1.00	40
11	09 21 02 161-08	cover	1.00	40
6	09 30 11 194 90	disc	1.00	2
7	09 18 30 007-08	sleeve	1.00	60
9	09 12 12 064-08	base	1.00	60
10	90 14 15 021 00 90	ring	1.00	2
3	90 14 10 063 00 90	seal	1.00	2
5	90 30 30 075 00 90	screw	1.00	2
8	90 28 10 030 00 90	ring	1.00	2