



LULU Concealed two-way diverter - Brushed Platinum

LULU

36 200 710    Product version from 4/1/2022



- rotary diverter
- rosette 60 x 78 mm
- with shut-off function

	Brushed Platinum	36 200 710-06 0010
	Chrome	36 200 710-00 0010

Required miscellaneous



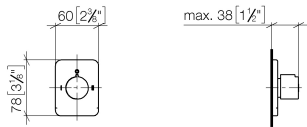
- |                                     |               |
|-------------------------------------|---------------|
| <b>Concealed two-way diverter -</b> | 35 202 970-90 |
| •max. recess depth 155 mm           | 0010          |
| •min. recess depth 85 mm            |               |

LULU Concealed two-way diverter - Brushed Platinum

LULU

36 200 710 Product version from 4/1/2022

mm [inches]



Codes & Standards

ADA

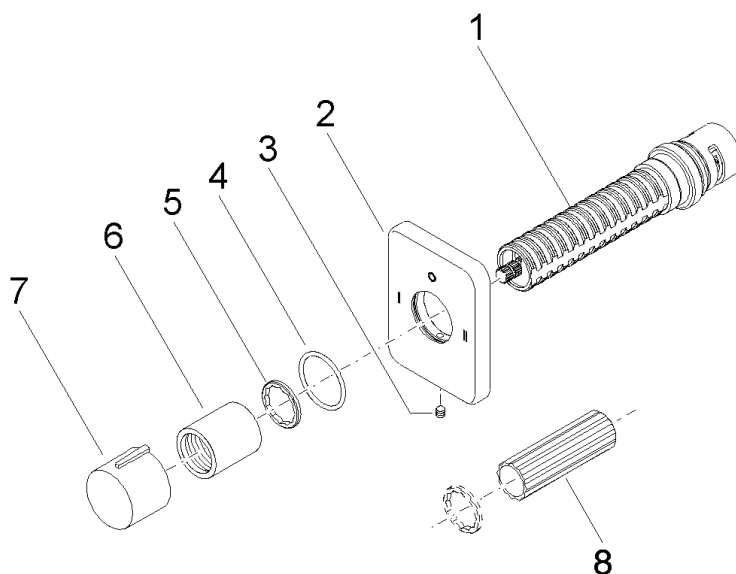
ASME A112.18.1

California Energy  
Commission  
(CEC)

cUPC

Certificates and sustainability

IAPMO\_4976 (



## Spare parts list

No.	Item Number	Name	Quantity used	Delivery time
5	09 16 01 025 90	ring	1.00	2
2	09 27 71 116-06	rosette	1.00	60
7	09 20 97 030-06	handle	1.00	10
1	90 90 03 306 10 90	diverter	1.00	2
6	09 21 02 070-06	cover	1.00	10
8	90 30 09 010 00 90	key	1.00	2
4	90 14 10 063 00 90	seal	1.00	2
3	90 31 11 007 00 90	pin	1.00	2