
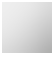
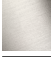



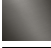


VAIA Concealed two-way diverter - Brushed Durabrand (23kt Gold)
VAIA


36 200 809
Product version from 4/1/2022



- rotary diverter
- rosette Ø 60 mm
- with shut-off function

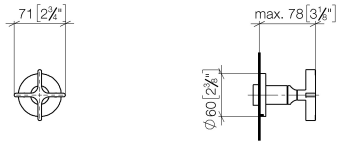
	Brushed Durabrand (23kt Gold)	36 200 809-28 0010
	Chrome	36 200 809-00 0010
	Brushed Platinum	36 200 809-06 0010
	Dark Chrome	36 200 809-19 0010
	Brushed Dark Brass	36 200 809-39 0010
	Brushed Bronze	36 200 809-42 0010
	Brushed Dark Platinum	36 200 809-99 0010

Required miscellaneous

	<b>Concealed two-way diverter -</b> •max. recess depth 160 mm •min. recess depth 85 mm	35 202 970-90 0010
---	--	-----------------------

36 200 809 Product version from 4/1/2022

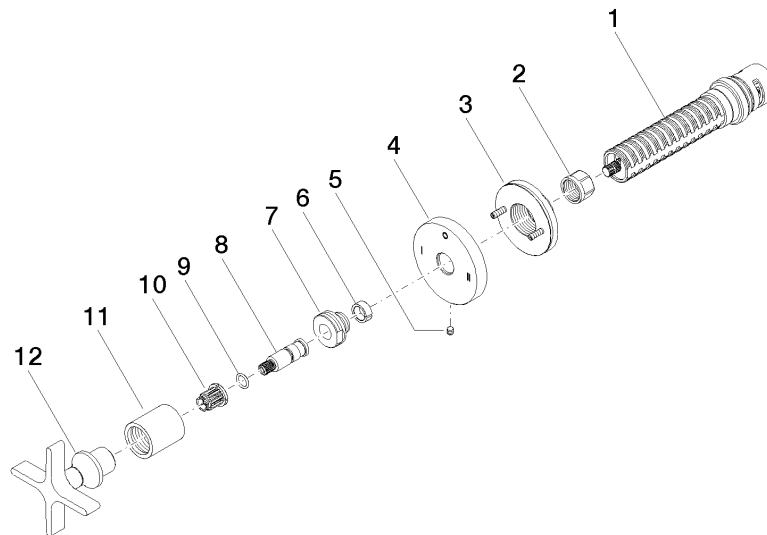
mm [inches]



#### Codes & Standards

ADA

California Energy  
Commission  
(CEC)



## Spare parts list

No.	Item Number	Name	Quantity used	Delivery time
5	09 31 11 294 90	pin	1.00	2
1	90 90 03 306 10 90	diverter	1.00	2
7	09 24 05 002 90	nipple	1.00	2
8	09 29 06 022 90	spindle	1.00	2
12	90 20 80 014 01-28	handle	1.00	20
4	09 27 89 120-28	rosette	1.00	60
3	90 21 02 181 00 90	disc	1.00	2
11	09 21 02 070-28	cover	1.00	20
10	90 12 12 002 00 90	fixing cap	1.00	2
6	90 14 15 020 03 90	ring	1.00	2
2	90 23 30 023 00 90	nut	1.00	2
9	90 14 10 060 00 90	seal	1.00	2