







VAIA Concealed two-way diverter - Brushed Dark Platinum

VAIA

36 200 809



- rotary diverter
- rosette Ø 60 mm
- with shut-off function

	Brushed Dark Platinum	36 200 809-99 0010
	Chrome	36 200 809-00 0010
	Brushed Platinum	36 200 809-06 0010
	Dark Chrome	36 200 809-19 0010
	Brushed Durabronze (23kt Gold)	36 200 809-28 0010
	Brushed Bronze	36 200 809-42 0010

Required miscellaneous



Concealed two-way diverter -	35 202 970-90
• max. recess depth 160 mm	0010
• min. recess depth 85 mm	

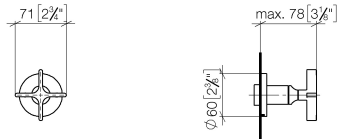


VAIA Concealed two-way diverter - Brushed Dark Platinum

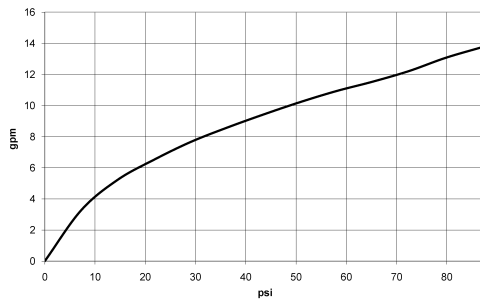
VAIA

36 200 809

mm [inches]



Flow rate chart



Codes & Standards

ASME A112.18.1

California Energy
Commission
(CEC)

cUPC



VAIA Concealed two-way diverter - Brushed Dark Platinum

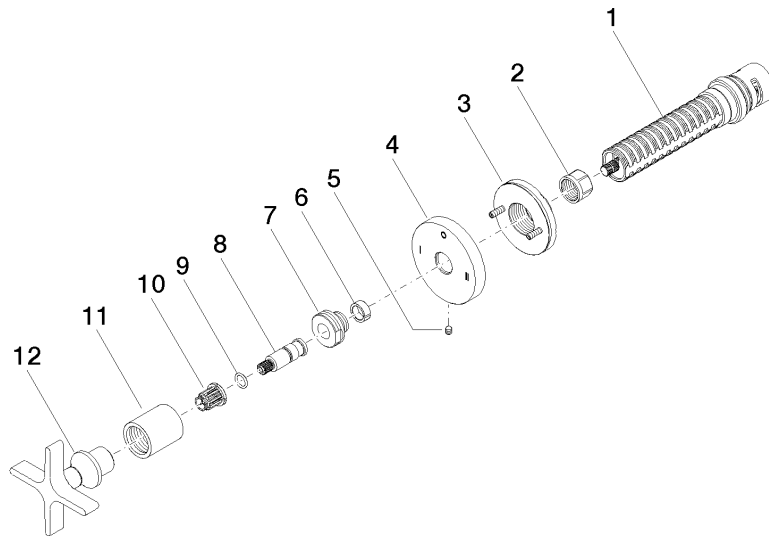
VAIA

36 200 809

Certificates

IAPMO_4976

Product version from 4/1/2022





VAIA Concealed two-way diverter - Brushed Dark Platinum

VAIA

36 200 809

Spare parts list

Product version from 4/1/2022

No.	Item Number	Name	Quantity used	Delivery time
	90 90 03 306 10 90	diverter	12	2