

VAIA Concealed two-way diverter - Brushed Platinum








VAIA

36 200 819


Product version from 4/1/2022



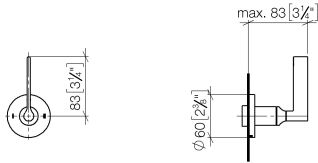
- rotary diverter
- rosette Ø 60 mm
- with shut-off function

	Brushed Platinum	36 200 819-06 0010
	Chrome	36 200 819-00 0010
	Dark Chrome	36 200 819-19 0010
	Brushed Durabrass (23kt Gold)	36 200 819-28 0010
	Brushed Dark Brass	36 200 819-39 0010
	Brushed Bronze	36 200 819-42 0010
	Brushed Dark Platinum	36 200 819-99 0010

Required miscellaneous

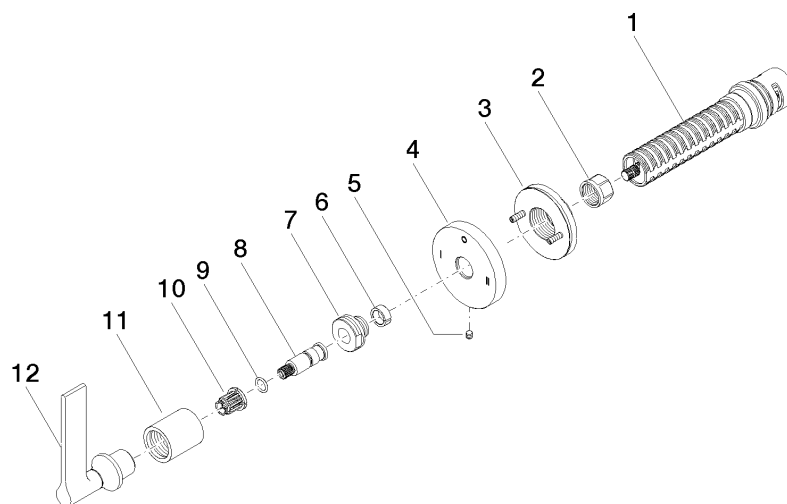
	Concealed two-way diverter - •max. recess depth 160 mm •min. recess depth 85 mm	35 202 970-90 0010
---	--	--------------------

mm [inches]



Codes & Standards			
ADA	ASME A112.18.1	California Energy Commission (CEC)	cUPC

Certificates and sustainability
IAPMO_4976 (



Spare parts list

No.	Item Number	Name	Quantity used	Delivery time
12	90 20 80 015 01-06	handle	1.00	10
1	90 90 03 306 10 90	diverter	1.00	2
5	09 31 11 294 90	pin	1.00	2
10	90 12 12 002 00 90	fixing cap	1.00	2
8	09 29 06 022 90	spindle	1.00	2
11	09 21 02 070-06	cover	1.00	10
4	09 27 89 120-06	rosette	1.00	60
3	90 21 02 181 00 90	disc	1.00	2
7	09 24 05 002 90	nipple	1.00	2
2	90 23 30 023 00 90	nut	1.00	2
6	90 14 15 020 03 90	ring	1.00	2
9	90 14 10 060 00 90	seal	1.00	2