

TARA Concealed two-way diverter - Platinum

TARA

36 200 882 Product version from 4/1/2022



- rotary diverter
- rosette 60 mm
- with shut-off function

| | | |
|---|-------------------------------------|--------------------|
|  | Platinum | 36 200 882-08 0010 |
|  | Chrome | 36 200 882-00 0010 |
|  | Brushed Platinum | 36 200 882-06 0010 |
|  | Dark Chrome | 36 200 882-19 0010 |
|  | Brushed Durabronze (23kt Gold) | 36 200 882-28 0010 |
|  | Matte Black | 36 200 882-33 0010 |
|  | Brushed Dark Brass | 36 200 882-39 0010 |
|  | Brushed Bronze | 36 200 882-42 0010 |
|  | Brushed Champagne (22kt Gold) | 36 200 882-46 0010 |
|  | Champagne (22kt Gold) | 36 200 882-47 0010 |
|  | Brushed Chrome | 36 200 882-93 0010 |
|  | Brushed Dark Platinum | 36 200 882-99 0010 |

Required miscellaneous



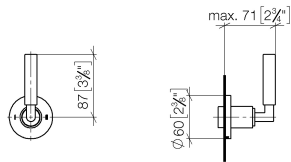
| | |
|-------------------------------------|---------------|
| Concealed two-way diverter - | 35 202 970-90 |
| • max. recess depth 160 mm | 0010 |
| • min. recess depth 85 mm | |

TARA Concealed two-way diverter - Platinum

TARA

36 200 882 Product version from 4/1/2022

mm [inches]

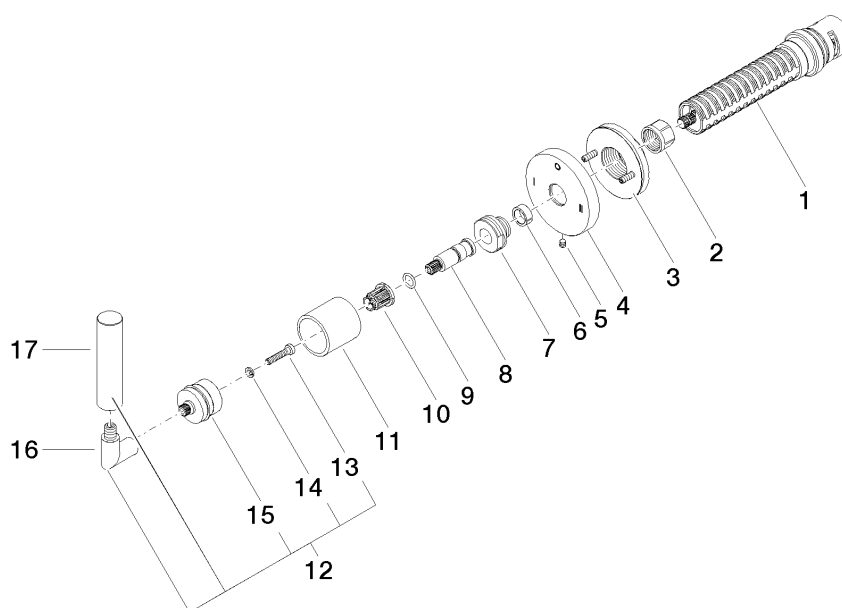


Codes & Standards

| | | | |
|-----|----------------|--|------|
| ADA | ASME A112.18.1 | California Energy Commission (CEC) | cUPC |
|-----|----------------|--|------|

Certificates and sustainability

IAPMO_4976 (



Spare parts list

| No. | Item Number | Name | Quantity used | Delivery time |
|--|--------------------|------------|---------------|---------------|
| 17 | 09 20 88 052-08 | handle | 1.00 | 40 |
| 11 | 09 21 02 144-08 | sleeve | 1.00 | 40 |
| 8 | 09 29 06 022 90 | spindle | 1.00 | 2 |
| 7 | 09 24 05 002 90 | nipple | 1.00 | 2 |
| 4 | 09 27 89 120-08 | rosette | 1.00 | 60 |
| 12 | 04 20 88 052 10-08 | handle | 1.00 | 40 |
| 10 | 90 12 12 002 00 90 | fixing cap | 1.00 | 2 |
| 3 | 90 21 02 181 00 90 | disc | 1.00 | 2 |
| 15 | 90 12 12 219 00-08 | base | 1.00 | 40 |
| 5 | 09 31 11 294 90 | pin | 1.00 | 2 |
| 1 | 90 90 03 306 10 90 | diverter | 1.00 | 2 |
| 16 | 04 18 20 022 00-08 | angle | 1.00 | - |
| Spare part can no longer be ordered, please order the replacement item | | | | |
| 14 | 90 30 11 029 00 90 | disc | 1.00 | 2 |
| 13 | 90 30 30 075 00 90 | screw | 1.00 | 2 |
| 9 | 90 14 10 060 00 90 | seal | 1.00 | 2 |
| 6 | 90 14 15 020 03 90 | ring | 1.00 | 2 |
| 2 | 90 23 30 023 00 90 | nut | 1.00 | 2 |