

TARA Concealed two-way diverter - Brushed Durabronze (23kt Gold)
TARA


36 200 882
Product version from 4/1/2022



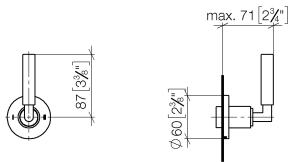
- rotary diverter
- rosette 60 mm
- with shut-off function

	Brushed Durabronze (23kt Gold)	36 200 882-28 0010
	Chrome	36 200 882-00 0010
	Brushed Platinum	36 200 882-06 0010
	Platinum	36 200 882-08 0010
	Dark Chrome	36 200 882-19 0010
	Matte Black	36 200 882-33 0010
	Brushed Dark Brass	36 200 882-39 0010
	Brushed Bronze	36 200 882-42 0010
	Brushed Champagne (22kt Gold)	36 200 882-46 0010
	Champagne (22kt Gold)	36 200 882-47 0010
	Brushed Chrome	36 200 882-93 0010
	Brushed Dark Platinum	36 200 882-99 0010

Required miscellaneous

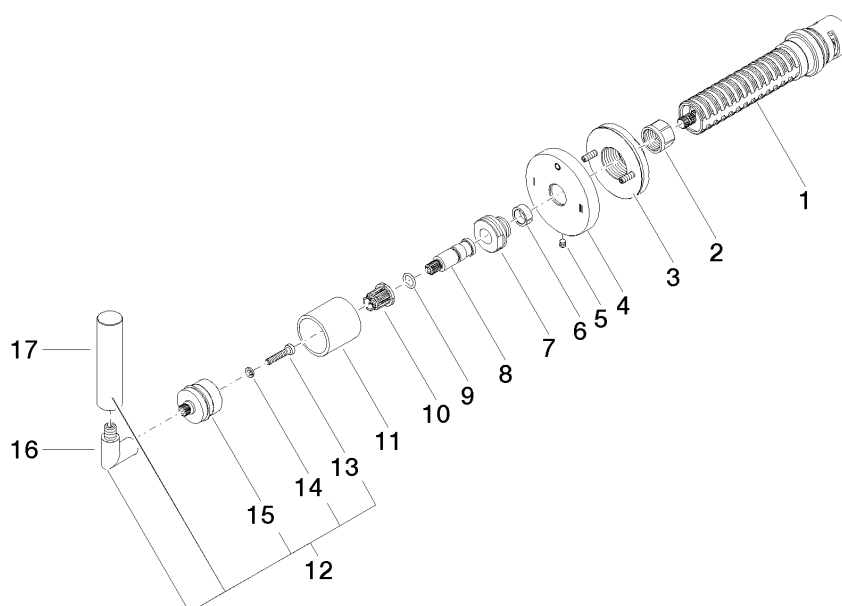
	Concealed two-way diverter - •max. recess depth 160 mm •min. recess depth 85 mm	35 202 970-90 0010
---	--	--------------------

mm [inches]



Codes & Standards

ADA	California Energy Commission (CEC)
-----	--



Spare parts list

No.	Item Number	Name	Quantity used	Delivery time
3	90 21 02 181 00 90	disc	1.00	2
7	09 24 05 002 90	nipple	1.00	2
8	09 29 06 022 90	spindle	1.00	2
1	90 90 03 306 10 90	diverter	1.00	2
15	90 12 12 219 00-28	base	1.00	20
5	09 31 11 294 90	pin	1.00	2
11	09 21 02 144-28	sleeve	1.00	20
12	04 20 88 052 10-28	handle	1.00	20
10	90 12 12 002 00 90	fixing cap	1.00	2
4	09 27 89 120-28	rosette	1.00	60
16	04 18 20 022 00-28	angle	1.00	-
Spare part can no longer be ordered, please order the replacement item				
17	09 20 88 052-28	handle	1.00	20
14	90 30 11 029 00 90	disc	1.00	2
9	90 14 10 060 00 90	seal	1.00	2
2	90 23 30 023 00 90	nut	1.00	2
13	90 30 30 075 00 90	screw	1.00	2
6	90 14 15 020 03 90	ring	1.00	2