


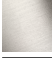






TARA Concealed two-way diverter - Brushed Champagne (22kt Gold)

TARA

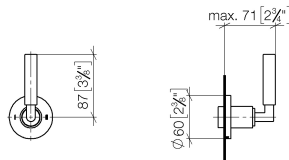
36 200 882 Product version from 4/1/2022



- rotary diverter
- rosette 60 mm
- with shut-off function

	Brushed Champagne (22kt Gold)	36 200 882-46 0010
	Chrome	36 200 882-00 0010
	Brushed Platinum	36 200 882-06 0010
	Platinum	36 200 882-08 0010
	Dark Chrome	36 200 882-19 0010
	Brushed Durabronze (23kt Gold)	36 200 882-28 0010
	Matte Black	36 200 882-33 0010
	Brushed Dark Brass	36 200 882-39 0010
	Brushed Bronze	36 200 882-42 0010
	Champagne (22kt Gold)	36 200 882-47 0010
	Brushed Chrome	36 200 882-93 0010
	Brushed Dark Platinum	36 200 882-99 0010

mm [inches]



Codes & Standards

ADA

ASME A112.18.1

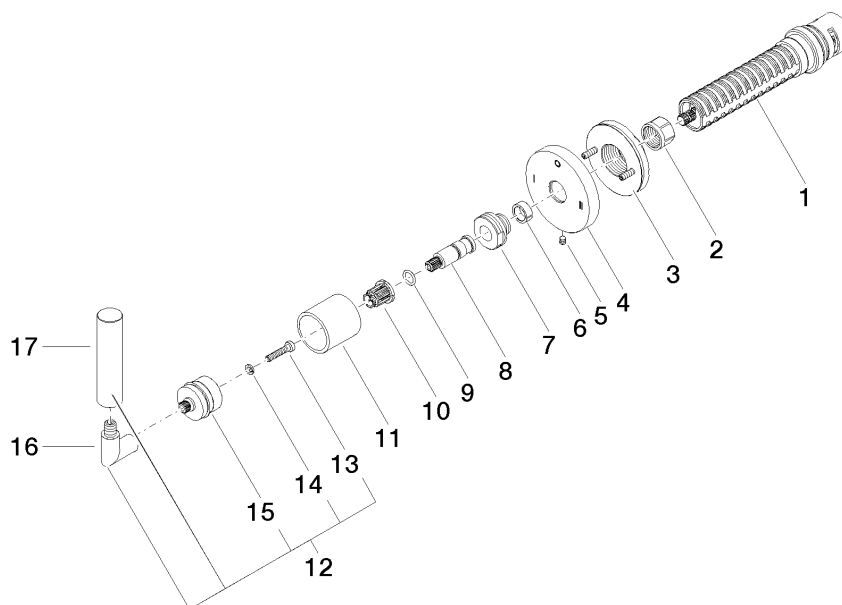
California Energy
Commission
(CEC)

cUPC

Certificates and sustainability

IAPMO_4976 (

Parts for other
finishes can be found
here: [Chrome](#)



Spare parts list

No.	Item Number	Name	Quantity used	Delivery time
	12 04 20 88 052 10-46	handle	1.00	60
	3 90 21 02 181 00 90	disc	1.00	2
	4 09 27 89 120-46	rosette	1.00	60
	16 04 18 20 022 00-46	angle	1.00	-
Spare part can no longer be ordered, please order the replacement item				
	8 09 29 06 022 90	spindle	1.00	2
	11 09 21 02 144-46	sleeve	1.00	60
	5 09 31 11 294 90	pin	1.00	2
	10 90 12 12 002 00 90	fixing cap	1.00	2
	1 90 90 03 306 10 90	diverter	1.00	2
	15 90 12 12 219 00-46	base	1.00	30
	17 09 20 88 052-46	handle	1.00	30
	7 09 24 05 002 90	nipple	1.00	2
	14 90 30 11 029 00 90	disc	1.00	2
	6 90 14 15 020 03 90	ring	1.00	2
	9 90 14 10 060 00 90	seal	1.00	2
	13 90 30 30 075 00 90	screw	1.00	2
	2 90 23 30 023 00 90	nut	1.00	2