

TARA Concealed two-way diverter - Brushed Champagne (22kt Gold)

TARA

36 200 892

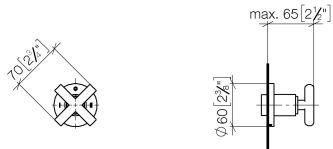


- rotary diverter
- rosette 60 mm
- with shut-off function

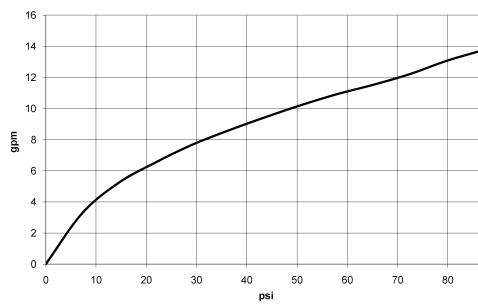
	Brushed Champagne (22kt Gold)	36 200 892-46 0010
	Chrome	36 200 892-00 0010
	Brushed Platinum	36 200 892-06 0010
	Platinum	36 200 892-08 0010
	Brushed Durabronze (23kt Gold)	36 200 892-28 0010
	Matte Black	36 200 892-33 0010
	Brushed Bronze	36 200 892-42 0010
	Champagne (22kt Gold)	36 200 892-47 0010
	Brushed Chrome	36 200 892-93 0010
	Brushed Dark Platinum	36 200 892-99 0010

36 200 892

mm [inches]



Flow rate chart

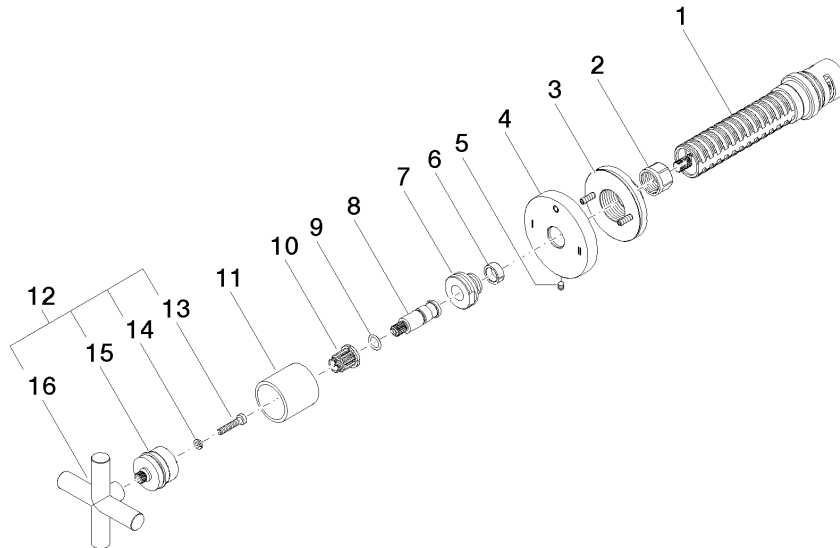


Codes & Standards

California Energy
Commission
(CEC)

Product version from 4/1/2022

Parts for other
finishes can be found
here: [Chrome](#)





TARA Concealed two-way diverter - Brushed Champagne (22kt Gold)

TARA

36 200 892

Spare parts list

Product version from 4/1/2022

No.	Item Number	Name	Quantity used	Delivery time
	90 90 03 306 10 90	diverter	16	2