

## TARA Concealed two-way diverter - Brushed Chrome

TARA

36 200 892 Product version from 4/1/2022



- rotary diverter
- rosette 60 mm
- with shut-off function

	Brushed Chrome	36 200 892-93 0010
	Chrome	36 200 892-00 0010
	Brushed Platinum	36 200 892-06 0010
	Platinum	36 200 892-08 0010
	Brushed Durabrass (23kt Gold)	36 200 892-28 0010
	Matte Black	36 200 892-33 0010
	Brushed Dark Brass	36 200 892-39 0010
	Brushed Bronze	36 200 892-42 0010
	Brushed Champagne (22kt Gold)	36 200 892-46 0010
	Champagne (22kt Gold)	36 200 892-47 0010
	Brushed Dark Platinum	36 200 892-99 0010

### Required miscellaneous



- |                                     |               |
|-------------------------------------|---------------|
| <b>Concealed two-way diverter -</b> | 35 202 970-90 |
| • max. recess depth 160 mm          | 0010          |
| • min. recess depth 85 mm           |               |

mm [inches]

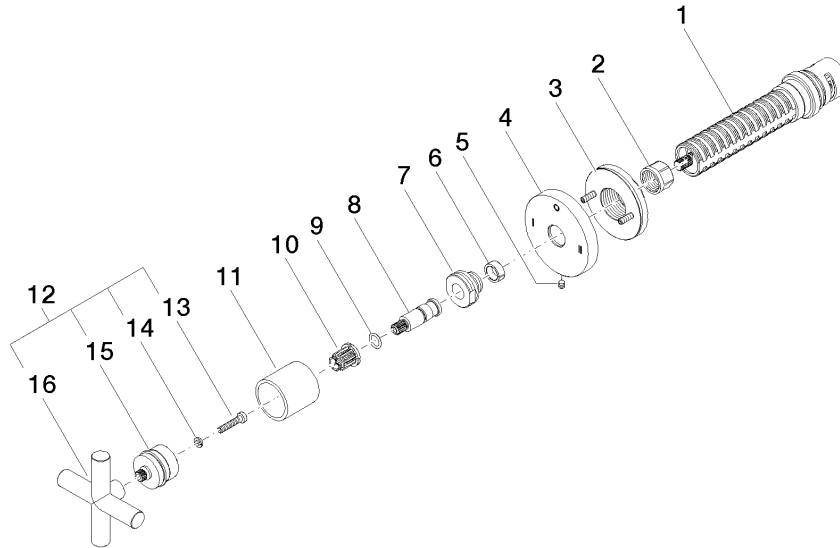


Codes & Standards

ADA	ASME A112.18.1	California Energy Commission (CEC)	cUPC
-----	----------------	--	------

Certificates and sustainability

IAPMO\_4976 (



## Spare parts list

No.	Item Number	Name	Quantity used	Delivery time
4	09 27 89 120-93	rosette	1.00	60
11	09 21 02 144-93	sleeve	1.00	20
10	90 12 12 002 00 90	fixing cap	1.00	2
5	09 31 11 294 90	pin	1.00	2
16	09 20 89 010-93	handle	1.00	60
15	90 12 12 219 00-93	base	1.00	20
3	90 21 02 181 00 90	disc	1.00	2
1	90 90 03 306 10 90	diverter	1.00	2
8	09 29 06 022 90	spindle	1.00	2
7	09 24 05 002 90	nipple	1.00	2
12	90 20 89 010 10-93	handle	1.00	20
13	90 30 30 075 00 90	screw	1.00	2
14	90 30 11 029 00 90	disc	1.00	2
6	90 14 15 020 03 90	ring	1.00	2
2	90 23 30 023 00 90	nut	1.00	2
9	90 14 10 060 00 90	seal	1.00	2