




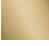
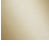

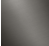
SYMETRICS Concealed two-way diverter - Chrome

IMO

36 200 980



- rotary diverter
- rosette 60 x 60 mm
- with shut-off function

	Chrome	36 200 980-00 0010
	Brushed Platinum	36 200 980-06 0010
	Brushed Light Gold	36 200 980-27 0010
	Brushed Durabronze (23kt Gold)	36 200 980-28 0010
	Brushed Champagne (22kt Gold)	36 200 980-46 0010
	Champagne (22kt Gold)	36 200 980-47 0010
	Brushed Dark Platinum	36 200 980-99 0010

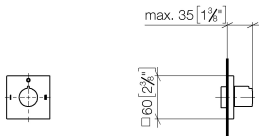
Required miscellaneous



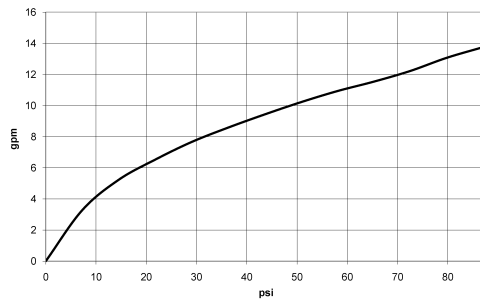
- | | |
|-------------------------------------|---------------|
| Concealed two-way diverter - | 35 202 970-90 |
| • max. recess depth 160 mm | 0010 |
| • min. recess depth 85 mm | |

36 200 980

mm [inches]



Flow rate chart



Codes & Standards

ASME A112.18.1

California Energy
Commission
(CEC)

cUPC



SYMETRICS Concealed two-way diverter - Chrome

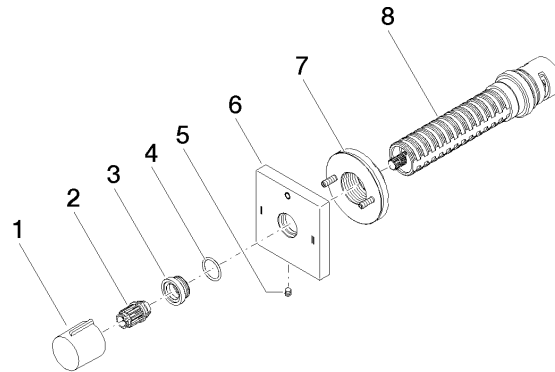
IMO

36 200 980

Certificates

IAPMO_4976

Product version from 4/1/2022





SYMETRICS Concealed two-way diverter - Chrome

IMO

36 200 980

Spare parts list

Product version from 4/1/2022

No.	Item Number	Name	Quantity used	Delivery time
	09 20 98 001-00	handle	8	10