

SYMETRICS Concealed two-way diverter - Brushed Dark Platinum

SYMETRICS

36 200 980 Product version from 4/1/2022



- rotary diverter
- rosette 60 x 60 mm
- with shut-off function

	Brushed Dark Platinum	36 200 980-99 0010
	Chrome	36 200 980-00 0010
	Brushed Platinum	36 200 980-06 0010
	Brushed Light Gold	36 200 980-27 0010
	Brushed Durabrass (23kt Gold)	36 200 980-28 0010
	Brushed Champagne (22kt Gold)	36 200 980-46 0010
	Champagne (22kt Gold)	36 200 980-47 0010
	Brushed Chrome	36 200 980-93 0010

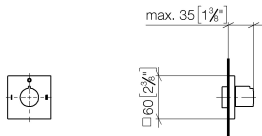
Required miscellaneous



- | | |
|-------------------------------------|---------------|
| Concealed two-way diverter - | 35 202 970-90 |
| • max. recess depth 160 mm | 0010 |
| • min. recess depth 85 mm | |

36 200 980 Product version from 4/1/2022

mm [inches]



Codes & Standards

ADA

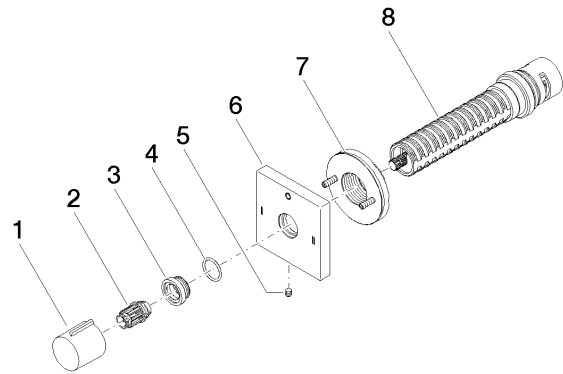
ASME A112.18.1

California Energy
Commission
(CEC)

cUPC

Certificates and sustainability

IAPMO_4976 (



Spare parts list

No.	Item Number	Name	Quantity used	Delivery time
7	90 21 02 181 00 90	disc	1.00	2
5	09 31 11 294 90	pin	1.00	2
2	09 12 12 005 90	fixing cap	1.00	2
3	09 12 12 043-99	base	1.00	20
6	09 27 98 039-99	rosette	1.00	60
1	09 20 98 001-99	handle	1.00	20
8	90 90 03 306 10 90	diverter	1.00	2
4	09 14 10 017 90	seal	1.00	2