

SYMETRICS Concealed two-way diverter - Chrome

SYMETRICS

36 200 985
Product version from 4/1/2022



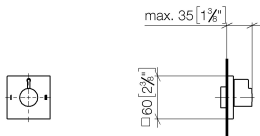
- rotary diverter
- rosette 60 x 60 mm
- with shut-off function

	Chrome	36 200 985-00 0010
	Brushed Platinum	36 200 985-06 0010
	Brushed Light Gold	36 200 985-27 0010
	Brushed Durabrass (23kt Gold)	36 200 985-28 0010
	Matte Black	36 200 985-33 0010
	Brushed Champagne (22kt Gold)	36 200 985-46 0010
	Champagne (22kt Gold)	36 200 985-47 0010
	Brushed Chrome	36 200 985-93 0010
	Brushed Dark Platinum	36 200 985-99 0010

Required miscellaneous

	<div> Concealed two-way diverter - </div> <div> <ul style="list-style-type: none"> •max. recess depth 160 mm •min. recess depth 85 mm </div>	35 202 970-90 0010
--	--	-----------------------

mm [inches]

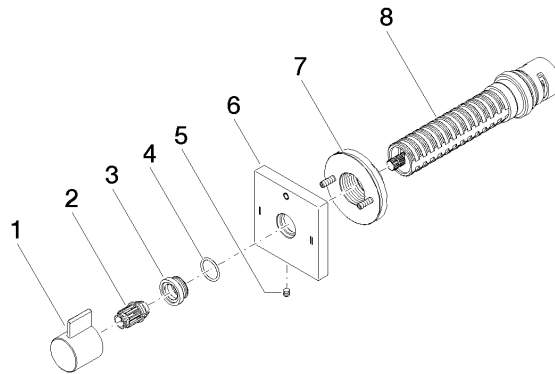


Codes & Standards

ADA	ASME A112.18.1	California Energy Commission (CEC)	cUPC
-----	----------------	------------------------------------	------

Certificates and sustainability

IAPMO_4976 (



Spare parts list

No.	Item Number	Name	Quantity used	Delivery time
6	09 27 98 039-00	rosette	1.00	60
1	09 20 98 002-00	handle	1.00	10
5	09 31 11 294 90	pin	1.00	2
2	09 12 12 005 90	fixing cap	1.00	2
7	90 21 02 181 00 90	disc	1.00	2
3	09 12 12 043-00	base	1.00	10
4	09 14 10 017 90	seal	1.00	2
8	90 90 03 306 10 90	diverter	1.00	2