



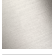



CL.1 Concealed two-way diverter - Dark Chrome

CL.1

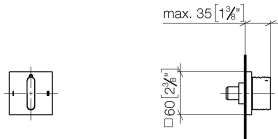
36 201 705 Product version from 4/1/2022



- with WAVES structure
- rotary diverter
- rosette 60 x 60 mm
- with shut-off function

	Dark Chrome	36 201 705-19 0010
	Chrome	36 201 705-00 0010
	Brushed Platinum	36 201 705-06 0010
	Brushed Champagne (22kt Gold)	36 201 705-46 0010
	Champagne (22kt Gold)	36 201 705-47 0010
	Brushed Dark Platinum	36 201 705-99 0010

mm [inches]



Codes & Standards			
ADA	ASME A112.18.1	California Energy Commission (CEC)	cUPC

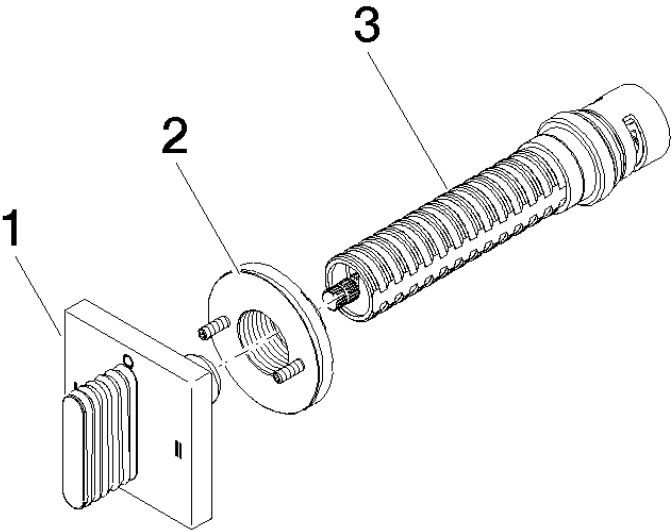
Certificates and sustainability
IAPMO_4976 (

CL.1 Concealed two-way diverter - Dark Chrome

CL.1

36 201 705 Product version from 4/1/2022

Parts for other
finishes can be found
here: [Chrome](#)



Spare parts list

No.	Item Number	Name	Quantity used	Delivery time
1	90 20 70 055 09-19	handle	1.00	20
3	90 90 03 306 10 90	diverter	1.00	2
2	90 21 02 181 00 90	disc	1.00	2