

## CL.1 Concealed two-way diverter - Brushed Dark Platinum

CL.1

36 201 705 Product version from 4/1/2022



- with WAVES structure
- rotary diverter
- rosette 60 x 60 mm
- with shut-off function

	Brushed Dark Platinum	36 201 705-99 0010
	Chrome	36 201 705-00 0010
	Brushed Platinum	36 201 705-06 0010
	Dark Chrome	36 201 705-19 0010
	Brushed Champagne (22kt Gold)	36 201 705-46 0010
	Champagne (22kt Gold)	36 201 705-47 0010

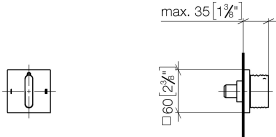
### Required miscellaneous



- |                                     |               |
|-------------------------------------|---------------|
| <b>Concealed two-way diverter -</b> | 35 202 970-90 |
| •max. recess depth 160 mm           | 0010          |
| •min. recess depth 115 mm           |               |

36 201 705    Product version from 4/1/2022

mm [inches]

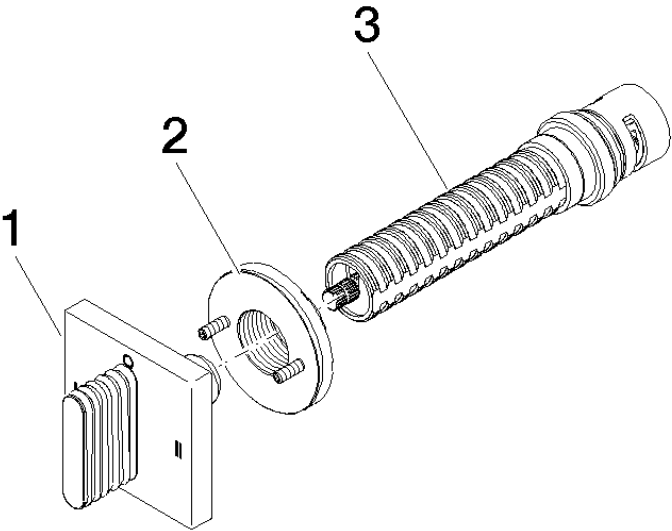


Codes & Standards

ADA	ASME A112.18.1	California Energy Commission (CEC)	cUPC
-----	----------------	--	------

Certificates and sustainability

IAPMO\_4976 (



Spare parts list

No.	Item Number	Name	Quantity used	Delivery time
3	90 90 03 306 10 90	diverter	1.00	2
1	90 20 70 055 09-99	handle	1.00	20
2	90 21 02 181 00 90	disc	1.00	2