

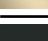





36 210 661 Product version from 4/1/2022



- rotary diverter
- handle Ø 60mm

	Brushed Bronze	36 210 661-42 0010
	Chrome	36 210 661-00 0010
	Brushed Platinum	36 210 661-06 0010
	Light Gold	36 210 661-26 0010
	Brushed Light Gold	36 210 661-27 0010
	Matte Black	36 210 661-33 0010
	Brushed Dark Brass	36 210 661-39 0010
	Brushed Champagne (22kt Gold)	36 210 661-46 0010
	Brushed Chrome	36 210 661-93 0010
	Brushed Dark Platinum	36 210 661-99 0010

Required miscellaneous



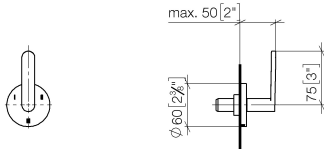
Concealed three-way diverter -

- min. recess depth 115 mm
- max. recess depth 160 mm

35 203 970-90
0010

36 210 661 Product version from 4/1/2022

mm [inches]

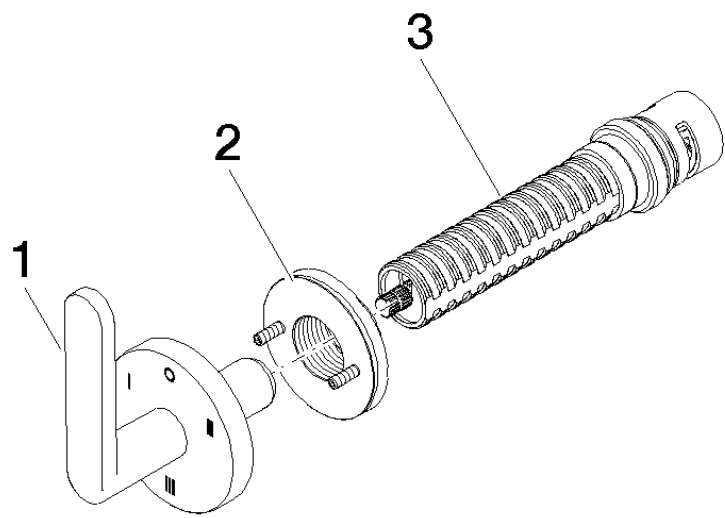


Codes & Standards

ADA	ASME A112.18.1	California Energy Commission (CEC)	cUPC
-----	----------------	------------------------------------	------

Certificates and sustainability

IAPMO_4976 (



Spare parts list

No.	Item Number	Name	Quantity used	Delivery time
2	90 21 02 181 00 90	disc	1.00	2
3	90 90 03 305 10 90	diverter	1.00	2
1	90 20 66 014 03-42	handle	1.00	20