




Concealed three-way diverter - Brushed Dark Platinum

SERIES SPECIFIC

36 210 740    Product version from 4/1/2022



- rotary diverter
- without rosette
- handle Ø 60mm
- with shut-off function

	Brushed Dark Platinum	36 210 740-99 0010
	Chrome	36 210 740-00 0010
	Brushed Platinum	36 210 740-06 0010
	Dark Chrome	36 210 740-19 0010
	Light Gold	36 210 740-26 0010
	Brushed Light Gold	36 210 740-27 0010
	Brushed Durabrass (23kt Gold)	36 210 740-28 0010
	Matte Black	36 210 740-33 0010
	Brushed Dark Brass	36 210 740-39 0010
	Brushed Bronze	36 210 740-42 0010
	Brushed Champagne (22kt Gold)	36 210 740-46 0010
	Champagne (22kt Gold)	36 210 740-47 0010

Required miscellaneous



- Concealed three-way diverter -

•max. recess depth 160 mm

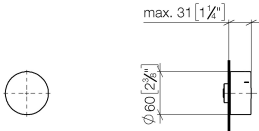
•min. recess depth 85 mm

35 203 970-90

0010

36 210 740    Product version from 4/1/2022

mm [inches]

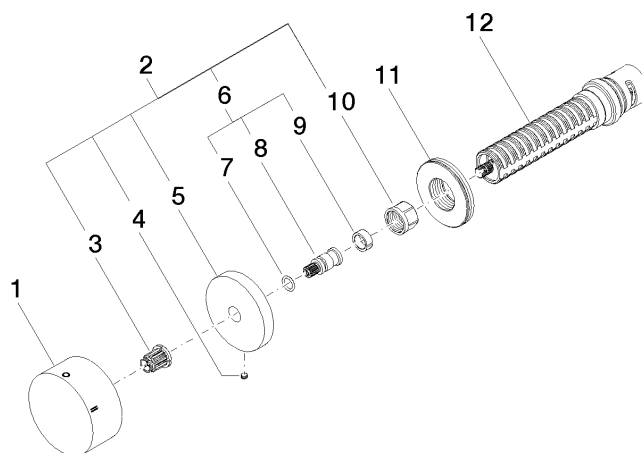


Codes & Standards

ASME A112.18.1	California Energy Commission (CEC)	cUPC
----------------	--	------

Certificates and sustainability

IAPMO\_4976 (



## Spare parts list

No.	Item Number	Name	Quantity used	Delivery time
3	90 12 12 002 00 90	fixing cap	1.00	2
5	09 27 74 004-99	rosette	1.00	20
11	09 30 01 107 90	sleeve	1.00	2
8	09 29 06 020-99	spindle	1.00	-
Spare part can no longer be ordered, please order the replacement item				
2	04 27 74 004 00-99	rosette	1.00	20
1	09 20 74 043-99	handle	1.00	60
4	09 31 11 055 90	pin	1.00	2
6	04 29 06 020 00-00	spindle	1.00	10
12	90 90 03 305 10 90	diverter	1.00	2
10	90 23 30 023 00 90	nut	1.00	2
9	90 14 15 020 03 90	ring	1.00	2
7	90 14 10 060 00 90	seal	1.00	2