





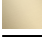
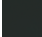

IMO Wall valve clockwise closing 1/2" - Brushed Platinum

IMO

36 310 671 Product version from 4/1/2024



- rosette Ø 60 mm
- head part with cut-to-length spindle and sleeve

	Brushed Platinum	36 310 671-06
	Chrome	36 310 671-00
	Dark Chrome	36 310 671-19
	Brushed Light Gold	36 310 671-27
	Matte Black	36 310 671-33
	Brushed Chrome	36 310 671-93
	Brushed Dark Platinum	36 310 671-99

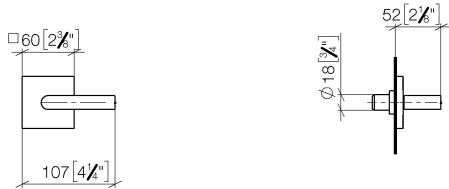
Required miscellaneous

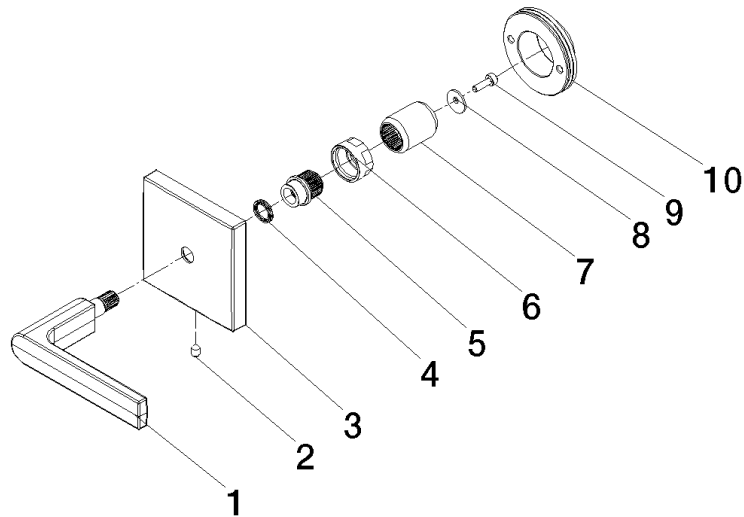


Wall valve clockwise closing 1/2" - 35 621 970-90
 ●min. recess depth mm 0010
 ●max. recess depth mm

36 310 671 Product version from 4/1/2024

mm [inches]





Spare parts list

No.	Item Number	Name	Quantity used	Delivery time
	5 09 12 12 057 90	fixing cap	1.00	2
	8 09 30 11 193 90	disc	1.00	2
	1 90 20 67 024 00-06	handle	1.00	10
	10 90 21 02 108 00 90	disc	1.00	2
	6 09 23 30 074 90	nut	1.00	2
	3 09 27 78 033-06	rosette	1.00	10
	2 90 31 11 007 00 90	pin	1.00	2
	4 09 14 03 187 90	seal	1.00	2
	7 09 12 12 059 90	sleeve	1.00	2
	9 09 30 30 167 90	screw	1.00	2