





LULU Concealed thermostat with one function volume control - Brushed Platinum


LULU

36 425 710 Product version up to 8/24/2020			
	<ul style="list-style-type: none"> cover plate 150 x 90 mm temperature control handle with safety limit stop at 38°C hot water temperature limiter, can be preset 		
	 Brushed Platinum		36 425 710-06 0010
	 Chrome		36 425 710-00 0010


Required miscellaneous

	Concealed thermostat for one- and two-way outlets -	35 426 970-90
	<ul style="list-style-type: none"> max. recess depth 136 mm min. recess depth 80 mm 	0010

Required miscellaneous

	xGRID Installation track 555 mm -	12 360 970 90

Recommended miscellaneous

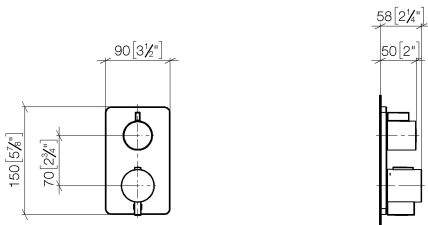
	xGRID Attachment set for integrating in the dry wall construction -	12 340 970 90



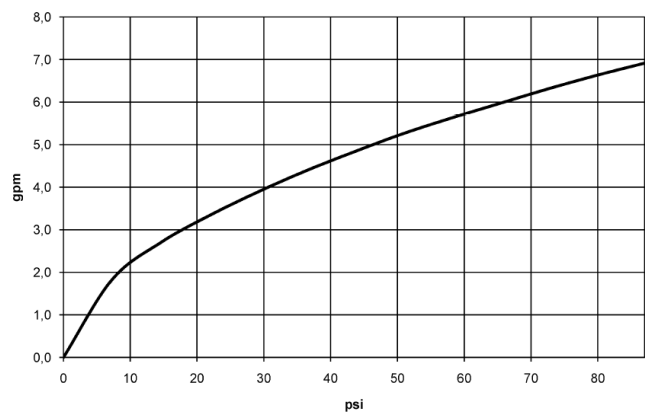
LULU Concealed thermostat with one function volume control - Brushed Platinum

LULU

36 425 710 Product version up to 8/24/2020
mm [inches]



Flow rate chart



Codes & Standards

ADA ASME A112.18.1 cUPC



LULU Concealed thermostat with one function volume control - Brushed Platinum

LULU

36 425 710 Product version up to 8/24/2020

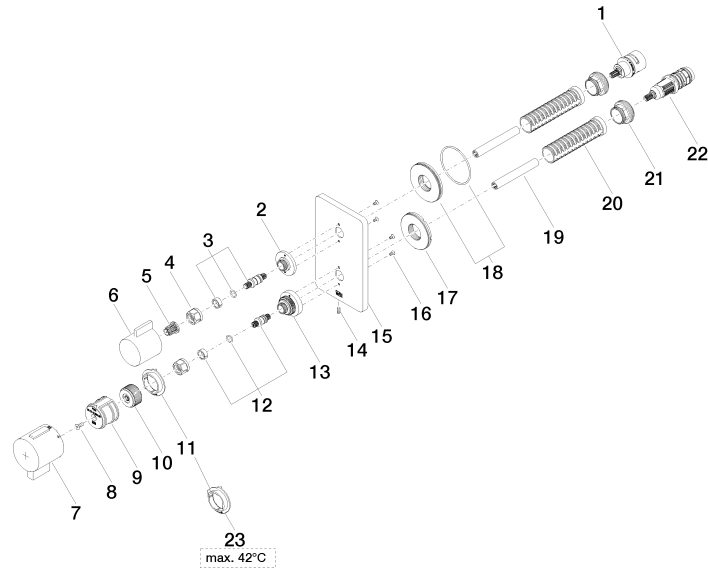
Certificates and sustainability

IAPMO_4976 (

LULU Concealed thermostat with one function volume control - Brushed Platinum

LULU

36 425 710 Product version up to 8/24/2020





LULU Concealed thermostat with one function volume control - Brushed Platinum

LULU

36 425 710 Product version up to 8/24/2020

Spare parts list

No.	Item Number	Name	Quantity used	Delivery time
22	90 15 02 013 00 90	cartridge	1.00	2
2	09 12 12 053-06	base	1.00	10
6	09 20 67 006-06	handle	1.00	10
16	09 30 30 157 90	screw	4.00	2
23	09 28 10 189 90	regulator	1.00	2
7	90 17 33 019 00-06	handle	1.00	10
14	09 31 11 134 90	pin	1.00	2
15	09 11 02 246-06	plate	1.00	10
10	09 12 12 054 90	base	1.00	2
17	09 30 01 296 90	disc	1.00	2
5	90 12 12 002 00 90	fixing cap	1.00	2
18	90 30 01 190 00 90	disc	1.00	2
13	09 12 12 051-06	base	1.00	10
11	09 28 10 190 90	regulator	1.00	2
1	90 90 03 166 00 90	top	1.00	2
21	09 24 04 257 90	nut	2.00	2
3	04 29 06 111 01-00	spindle	1.00	10
9	90 12 12 052 00 90	base	1.00	2
12	04 29 06 024 01-00	spindle	1.00	10
4	90 23 30 023 00 90	nut	2.00	2
19	90 23 01 124 00 90	sleeve	2.00	2
8	90 30 30 124 00 90	screw	1.00	2
20	90 18 40 077 01 90	spindle	2.00	2