

LISSÉ Concealed thermostat with one function volume control - Brushed Platinum

LISSÉ

36 425 845

Product version from 3/9/2016 to 8/24/2020

● cover plate 150 x 90 mm

● temperature control handle with safety limit stop at 38°C

● hot water temperature limiter, can be preset

Brushed Platinum

36 425 845-06 0010

Chrome

36 425 845-00 0010

Dark Chrome

36 425 845-19 0010

Brushed Light Gold

36 425 845-27 0010

Matte Black

36 425 845-33 0010

Brushed Chrome

36 425 845-93 0010

Brushed Dark Platinum

36 425 845-99 0010

Required miscellaneous

Concealed thermostat for one- and two-way outlets -

●max. recess depth 136 mm

●min. recess depth 80 mm

35 426 970-90 0010

Required miscellaneous

xGRID Installation track 555 mm -

12 360 970 90

Recommended miscellaneous

xGRID Attachment set for integrating in the dry wall construction -

12 340 970 90

We reserve the right to change designs, product range and technical specifications without prior notice.

More information can be found at: www.dornbracht.com +49 (0) 2371 8899 900 mail@dornbracht.com

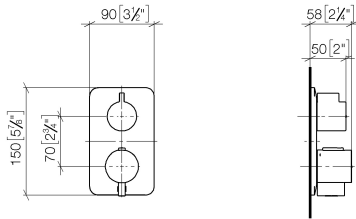
1/4

6/30/2025

LISSE Concealed thermostat with one function volume control - Brushed Platinum

LISSE

36 425 845 Product version from 3/9/2016 to 8/24/2020
mm [inches]



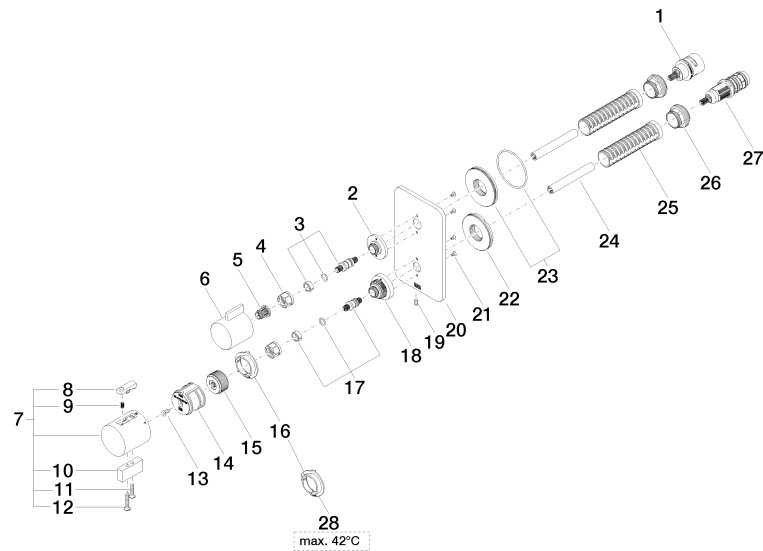
Codes & Standards

ADA

LISSÉ Concealed thermostat with one function volume control - Brushed Platinum

LISSÉ

36 425 845 Product version from 3/9/2016 to 8/24/2020



LISSÉ Concealed thermostat with one function volume control - Brushed Platinum

LISSÉ

36 425 845 Product version from 3/9/2016 to 8/24/2020

Spare parts list

No.	Item Number	Name	Quantity used	Delivery time
16	09 28 10 190 90	regulator	1.00	2
1	90 90 03 166 00 90	top	1.00	2
18	09 12 12 051-06	base	1.00	10
6	09 20 67 006-06	handle	1.00	10
26	09 24 04 257 90	nut	2.00	2
23	90 30 01 190 00 90	disc	1.00	2
10	09 20 33 006-06	handle	1.00	10
19	09 31 11 134 90	pin	1.00	2
20	09 11 02 302-06	plate	1.00	10
15	09 12 12 054 90	base	1.00	2
21	09 30 30 157 90	screw	4.00	2
9	90 16 02 027 00 90	spring	1.00	2
12	09 30 30 160-06	screw	1.00	10
5	90 12 12 002 00 90	fixing cap	1.00	2
27	90 15 02 013 00 90	cartridge	1.00	2
11	09 30 30 159-06	screw	1.00	10
2	09 12 12 053-06	base	1.00	10
28	09 28 10 189 90	regulator	1.00	2
7	04 17 33 006 00-06	handle	1.00	60
22	09 30 01 296 90	disc	1.00	2
25	90 18 40 077 01 90	spindle	2.00	2
14	90 12 12 052 00 90	base	1.00	2
3	04 29 06 111 01-00	spindle	1.00	10
13	90 30 30 124 00 90	screw	1.00	2
17	04 29 06 024 01-00	spindle	1.00	10
24	90 23 01 124 00 90	sleeve	2.00	2
4	90 23 30 023 00 90	nut	2.00	2
8	90 21 33 011 00-13	handle	1.00	2