

Concealed thermostat with one function volume control - Brushed Platinum

META

36 425 970



- cover plate Ø 150 mm
- temperature control handle with safety limit stop at 38°C
- hot water temperature limiter, can be preset

	Brushed Platinum	36 425 970-06 0010
	Chrome	36 425 970-00 0010
	Platinum	36 425 970-08 0010
	Dark Chrome	36 425 970-19 0010
	Light Gold	36 425 970-26 0010
	Brushed Light Gold	36 425 970-27 0010
	Brushed Durabronze (23kt Gold)	36 425 970-28 0010
	Matte Black	36 425 970-33 0010
	Brushed Bronze	36 425 970-42 0010
	Brushed Champagne (22kt Gold)	36 425 970-46 0010
	Champagne (22kt Gold)	36 425 970-47 0010
	Brushed Chrome	36 425 970-93 0010
	Brushed Dark Platinum	36 425 970-99 0010

Required miscellaneous



Concealed thermostat for one- and two-way outlets -	35 426 970-90 0010
• max. recess depth 136 mm	
• min. recess depth 80 mm	

Recommended miscellaneous



xGRID Attachment set for integrating in the dry wall construction -	12 340 970 90
--	---------------

Required miscellaneous



xGRID Installation track 555 mm -	12 360 970 90
--	---------------

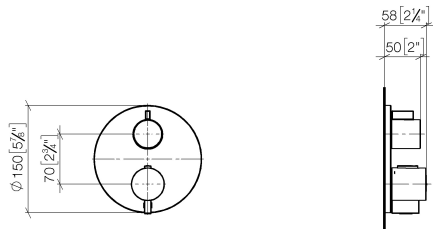


Concealed thermostat with one function volume control - Brushed Platinum

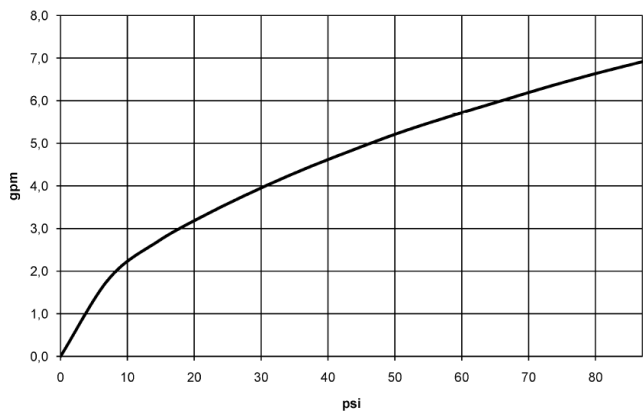
META

36 425 970

mm [inches]



Flow rate chart



Codes & Standards

ADA	ASME A112.18.1	ASME A112.18.1/CSA B125.1	cUPC
-----	----------------	---------------------------------	------



Concealed thermostat with one function volume control - Brushed Platinum

META

36 425 970

Certificates

IAPMO_4976

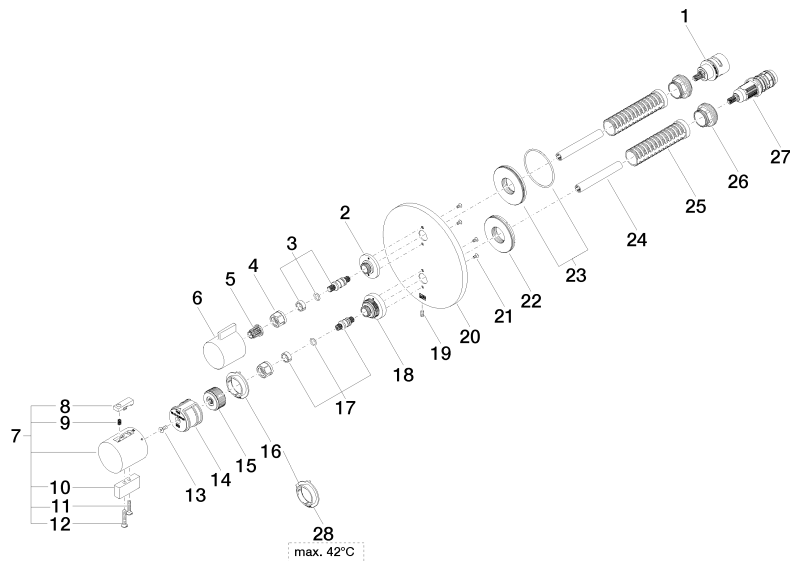
36 425 970

Product version up to 8/24/2020

Product version from 8/24/2020 to 2/1/2021

Product version from 2/1/2021 to 6/30/2022

Product version from 6/30/2022





Concealed thermostat with one function volume control - Brushed Platinum

META

36 425 970

Spare parts list

Product version up to 8/24/2020

Product version from 8/24/2020 to 2/1/2021

Product version from 2/1/2021 to 6/30/2022

Product version from 6/30/2022

No.	Item Number	Name	Quantity used	Delivery time
	90 90 03 166 00 90	top	35	2