

Concealed thermostat with one function volume control - Light Gold

META

36 425 970

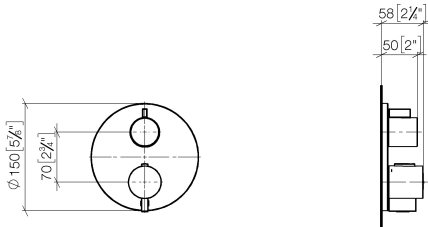


- cover plate Ø 150 mm
- temperature control handle with safety limit stop at 38°C
- hot water temperature limiter, can be preset

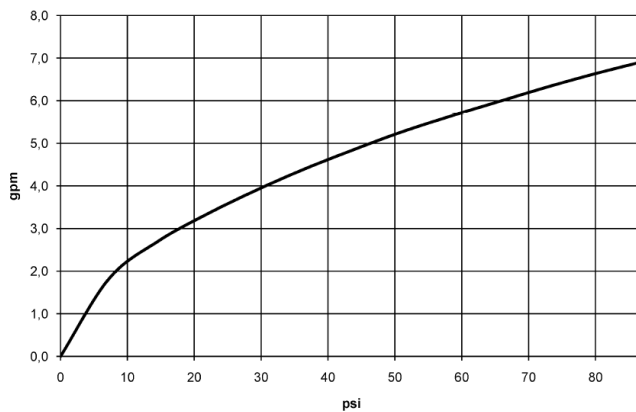
| | | |
|--|--------------------------------|--------------------|
|  | Light Gold | 36 425 970-26 0010 |
|  | Chrome | 36 425 970-00 0010 |
|  | Brushed Platinum | 36 425 970-06 0010 |
|  | Platinum | 36 425 970-08 0010 |
|  | Dark Chrome | 36 425 970-19 0010 |
|  | Brushed Light Gold | 36 425 970-27 0010 |
|  | Brushed Durabronze (23kt Gold) | 36 425 970-28 0010 |
|  | Matte Black | 36 425 970-33 0010 |
|  | Brushed Bronze | 36 425 970-42 0010 |
|  | Brushed Champagne (22kt Gold) | 36 425 970-46 0010 |
|  | Champagne (22kt Gold) | 36 425 970-47 0010 |
|  | Brushed Chrome | 36 425 970-93 0010 |
|  | Brushed Dark Platinum | 36 425 970-99 0010 |

36 425 970

mm [inches]



Flow rate chart



Codes & Standards

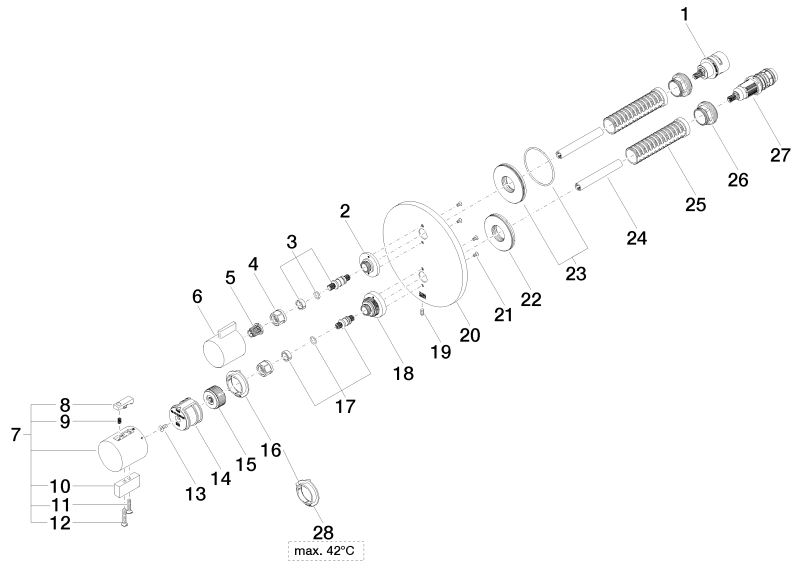
ADA

ASME
A112.18.1/CSA
B125.1

36 425 970

Product version from 6/30/2022

Parts for other
finishes can be found
here: [Chrome](#)





Spare parts list

Product version from 6/30/2022