

## Concealed thermostat with one function volume control - Brushed Light Gold

META

36 425 970

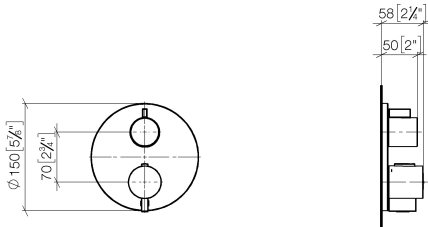


- cover plate Ø 150 mm
- temperature control handle with safety limit stop at 38°C
- hot water temperature limiter, can be preset

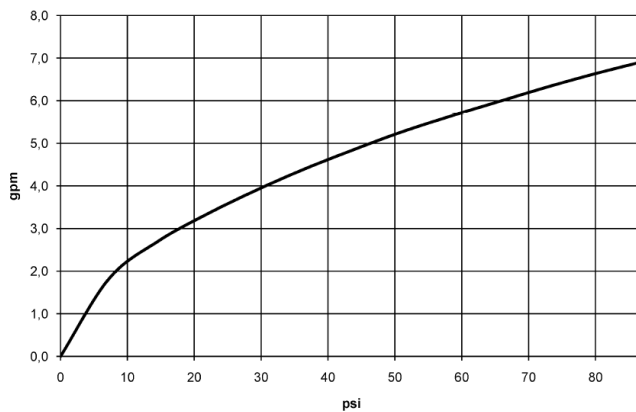
	Brushed Light Gold	36 425 970-27 0010
	Chrome	36 425 970-00 0010
	Brushed Platinum	36 425 970-06 0010
	Platinum	36 425 970-08 0010
	Dark Chrome	36 425 970-19 0010
	Light Gold	36 425 970-26 0010
	Brushed Durabronze (23kt Gold)	36 425 970-28 0010
	Matte Black	36 425 970-33 0010
	Brushed Bronze	36 425 970-42 0010
	Brushed Champagne (22kt Gold)	36 425 970-46 0010
	Champagne (22kt Gold)	36 425 970-47 0010
	Brushed Chrome	36 425 970-93 0010
	Brushed Dark Platinum	36 425 970-99 0010

36 425 970

mm [inches]



### Flow rate chart



### Codes & Standards

ADA

ASME

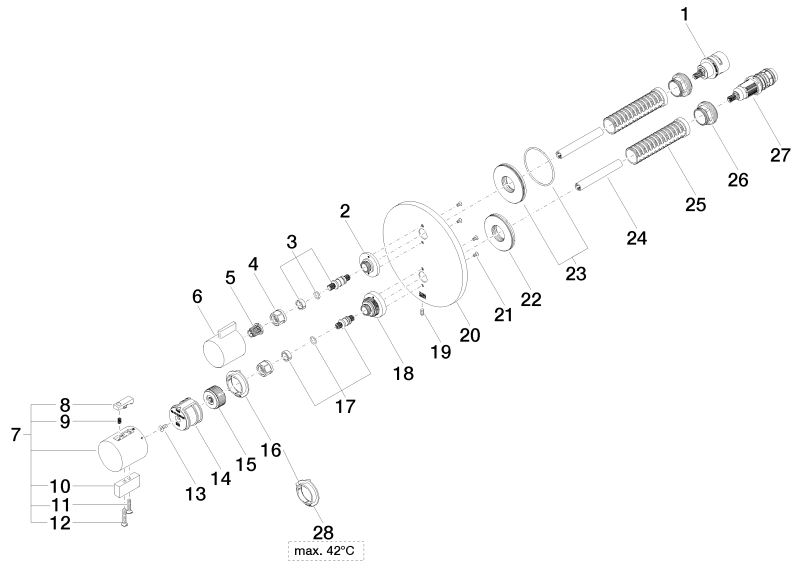
A112.18.1/CSA

B125.1

36 425 970

**Product version from 6/30/2022**

Parts for other  
finishes can be found  
here: [Chrome](#)





## Concealed thermostat with one function volume control - Brushed Light Gold

---

META

36 425 970

### **Spare parts list**

**Product version from 6/30/2022**